

W6OTX

W6ARA

PAARA NEWSLETTER

VOLUME 55, NUMBER 5, May 2006

K6OTA

K6YQT

# PAARAgraphs



Celebrating 69 years as an *active* ham radio club—*Since 1937*  
The Palo Alto Amateur Radio Association, Inc.



## CALENDAR



May	5	<b>PAARA Meeting</b> 7:00–9:30 Menlo Park Rec Center 700 Alma Street Menlo Park, CA 94025
May	10	<b>Board Meeting</b> 7:00pm Red Cross Bld., 400 Mitchell Lane Palo Alto <i>(due to Parking Lot problems location may change, check net before Bd. meeting)</i>
June	2	<b>PAARA Meeting,</b> 7:00pm
June	7	<b>PAARA Board Meeting,</b> 7:00pm
July	7	<b>PAARA Meeting,</b> 7:00pm
July	12	<b>PAARA Board Meeting,</b> 7:00pm



## NEXT MEETING

May 5, 2006

**SPEAKER**

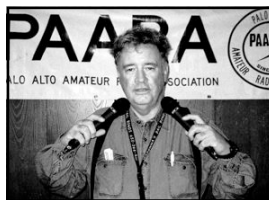
and

**PROGRAM:**

### Anti-Jam Technology for Airport GPS Systems

On May 5<sup>th</sup>, at 7:00 pm in the Menlo Park Rec Center, PAARA will present a lecture on state-of-the-art GPS receiver and antenna technology that is so close to the bleeding edge we'll have to reinforce the projection screen with Kevlar.

**Rich Govea** of Radix Technologies is the program manager for an FAA-sponsored enhancement to increase the reliability of the new GPS precision approaches at airports that are using the Local Area Augmentation System (LAAS) to increase GPS accuracy down to ½ meter within 20-30 miles of airports that have LAAS installed. Mr. Govea's LAAS Anti-Jam Feasibility Study involves the design of enhanced GPS receivers and antenna arrays to give these systems immunity to any potential jamming signals, thus ensuring the reliability of critical navigation systems. Come join us and learn about the latest in signal processing and antenna beam forming techniques. ~k6web



## President's corner

The month of May should bring more than flowers to PAARA as we host the Saturday morning electronic flea market on May 13<sup>th</sup> at DeAnza College. This is our largest and usually most profitable fund raiser of the year so we anticipate a huge response by PAARA members, even if just to purchase a coffee or donut. Please come early as the really good deals from the vendors are found and snapped up sometimes just as the sun is rising over Santa Clara County.

PAARA wishes to apologize to those members who may not have received a copy of PAARAgraphs during the month of April. There was a technical problem with the preparation of the mailing labels and some paid members of PAARA were simply left off of the distribution list. We have attempted to correct that problem with this month's edition. Should you not receive your newsletter this month, and you have paid your 06 membership of \$18.00, then please contact the PAARA database manager: **Rick Melrose, K6DRM** or the PAARA computer expert, **Mark Cohen, K6EF**, with a copy to the PAARA Secretary, **Adrianus Schrauwen, W6AJS**.

The PAARA name/call sign badge coordinator, **Doug Teter, KG6LWE** has made special arrangements with the badge manufacturer so that a PAARA member can now have any City or Town listed on the badge, rather than just Palo Alto. So now is the time to order a new badge for yourself or your good ham buddy.

We would like some input from the PAARA membership on how we can obtain more member participation in the Monday evening PAARA net on the N6NFI repeater. Many PAARA members will recall how this was handled several years ago with an earned wall certificate for a certain number of check-ins over a specific period of time. Kindly submit your thoughts to **Vic Black, AB6SO**, or the PAARA Secretary, **Adrianus Schrauwen, W6AJS**, so the Board of Directors has some direction.

Please support your radio club advertisers as published in PAARAgraphs and advise them that you saw their ad in PAARAgraphs. If you have a business that offers a product or service to humans who want to spend money, then consider advertising in PAARAgraphs. We do have a large circulation of readers and many of them are still active consumers. I will look forward to seeing you at the Flea Market and don't forget that the last weekend of June is Field Day. ~Terry Finn. AA6T

# Miscellaneous Info

## VE Exams, 3rd Saturday each month, 10:30AM, 145.23- PL=100Hz

Redwood City Main Library, Community Conference Room  
1044 Middlefield Road, Redwood City, CA  
contact: <http://amateur-radio.org/> or Al, WB6IMX@att.net

## ELECTRONICS FLEA MARKET

Sponsorship by A.S.V.A.R.O.  
(Association of Silicon Valley Amateur Radio Organizations)  
Second Saturday of month, March-October, 6am-2pm  
Howard M. Krawetz, N6HM 650-856-9761  
Contact: <http://www.electronicfleamarket.com/>

**LIVERMORE SWAP MEET**. Now in Robertson Park, Livermore, every first Sunday of the month. 7 am to 11:30 am. Free admission for buyers. For further info, see: [www.larkswap.com](http://www.larkswap.com) or contact Ian Parker, W6TCP at [swapmeet@livermoreark.org](mailto:swapmeet@livermoreark.org)

**PAARA** Palo Alto Amateur Radio Association  
meets 1<sup>st</sup> Friday 7:30pm each month, Net 145.230 each Monday 8:30,  
contact: <http://PAARA.org/> or Terry Finn, AA6T, 650-366-9111

## FARS Foothills Amateur Radio Society

meets 4<sup>th</sup> Friday 7:30pm each month  
contact: <http://www.fars.k6ya.org/>

## NCDXC Northern California DX Club

meets 2<sup>nd</sup> Friday 7:30pm each month,  
repeater for member info 147.360, Thur 8:00PM  
contact: <http://ncdxc.org/> or Mike Gavin W6WZ, (650) 851 8699

## NorCalQRP Northern California QRP Club

meets 1<sup>st</sup> Sunday each month  
contact: <http://www.norcalqrp.org/>

**SPECS** Southern Peninsula Emergency Communication System  
meets each Monday 8:00pm on Net 145.27, 440.80 MHz  
contact: <http://specsnet.org/> or Tom Cascone, KF6LWZ, 650-688-0441

## SCARES South County Amateur Radio Emergency Service

meets 3<sup>rd</sup> Thursday 7:30pm each month, San Carlos City Hall.  
Net is on 146.445 [PL 114.8] & 444.50 (PL-100) 7:30 Monday evenings.  
contact: President Gary D. Aden, K6GDA 650-743-1265(D), 650- 595-5590 (N)  
Web: <http://k6mpn.org> E-mail: [pres@k6mpn.org](mailto:pres@k6mpn.org)

## SCCARA Santa Clara County Amateur Radio Association

Operates W6UU & W6UUR, repeater 146.985-pl  
Nets: 2m, 7:30pm Mon; 70cm, 442.425+ (pl 107.2) Thur.  
meets 2<sup>nd</sup> Mon each month @ 7:30 PM.  
contact: <http://www.qsl.net/scacara/> or Clark Murphy KE6KXO 408-262-9334  
ARRL/VEC license testing contact 408-507-4698

## SVECS Silicon Valley Emergency Communications

Operates AA6BT repeater (146.115 MHz+)  
contact: <http://www.svecs.net/> or Lou Stierer WA6QYS 408 241 7999

## WVARA West Valley Amateur Radio Association

W6PIY six-meter repeater on 52.58MHz. Normally, six-meters is linked with 147 and 223, while 441 and 1286 repeaters are linked.  
VHF: 52.58 (-500) 151.4 ctcss UHF: 441.35 (+5.0 88.5) ctcss  
147.39 (+600) 151.4 ctcss 1286.20 (-12m) 100.0 ctcss  
223.96 (+1.6) 156.7 ctcss  
meets 3<sup>rd</sup> Wed every month.  
contact: <http://wvara.org/>, Bill Ashby N6FFC, 408-267-3118, N6FFC@Juno.com, or N6FFC@ARRL.NET

## DISASTER SERVICES

### American Red Cross, PALO ALTO AREA CHAPTER

400 Mitchell Lane  
Meets 3<sup>rd</sup> Wed. each month 7:30PM  
HF, packet, BBS, ATV, OSCAR Gateway, NASA satellite.  
contact: <http://paarc.org/> or Mac Millian 650-688-0423. [MACM@paarc.org](mailto:MACM@paarc.org)

### American Red Cross, SANTA CLARA VALLEY CHAPTER

contact: <http://santaclaravalley.redcross.org/> or Scott Hensley KB6UOO, (408) 967 7924  
[shensley@Novell.com](mailto:shensley@Novell.com)

(please send changes to PAARAgaphs editor: [k6uro@arrl.net](mailto:k6uro@arrl.net))

## Palo Alto Amateur Radio Association, Inc.

PO Box 911 Menlo Park, CA 94026

### Officers

President ..... Terry Finn, AA6T 650-366-9111  
aa6t@arrl.net  
Vice President ..... Peter Sheerin, K6WEB 415-298-7383  
k6web@arrl.net  
Secretary ..... Adrianus Schrauwen, W6AJS 650-494-6256  
w6ajs@arrl.net  
Treasurer ..... Ron Chester, W6AZ 408-243 2221  
w6az@arrl.net

### Directors

Director (\*07) ..... Gerry Tucker, N6NV 650-326 4908  
n6nv@arrl.net  
Director (07) ..... Andreas Junge, N6NU 650-233-0843  
n6nu@arrl.net  
Director (\*06) ..... Kristen McIntyre, K6WX  
k6wx@arrl.net  
Director (\*06) ..... David Ungar, W6DH 650-255-2131  
ungar@mac.com

See the calendar for Board meeting times. **Visitors are welcome.**

### Appointed Positions

Membership ..... Vic Black, AB6SO 650-366 0636  
ab6so@smrn.com  
Database ..... Rick Melrose K6RDM 408-732-2247  
k6rdm@arrl.net  
Chaplain ..... Rev. Rick Line, KG6TMD 650 323 8544  
kg6tmd@arrl.net  
Station Trustee W6OTX, K6YQT, W6ARA ... Gerry Tucker, N6NV  
Station Trustee K6OTA ... Ron Chester, W6AZ  
Property Manager ..... Gerry Tucker, N6NV  
Fund Raising Coordinator .Bob Korte, KD6KYT 650-595 1842  
rgk4u@aol.com  
Badge Coordinator ..... Doug Teter, KG6LWE 650-367-6200  
dteter@cwci.com  
Raffle Coordinator ..... Jim Rice, K6AK 650-851-2274  
Ticket Master ..... Kyle Rice, KG6MSK  
Field Day Coordinator ..... Gerry Tucker, N6NV  
ASVARO Rep ..... Rolf Klubo, N6NFI 650-856-2748  
n6nfi@arrl.net  
Webmaster ..... Peter Sheerin, K6WEB  
Technical Coordinator ..... Joel Wilhite, KD6W ..... 650-325-8239.  
joel.wilhite@gmail.com  
QSL Manager ..... Rob Riley, KG6HVW (cell) 650 799-1607  
kg6hvw@arrl.net

### PAARAgaphs Staff

Editor ..... Wally Porter, K6URO 650-494 7038  
k6uro@arrl.net  
Photography: Dick Kors, KM6EP, Al Montoya, WB6IMX, John Larribeau, KR6MR,  
Wally Porter, K6URO, Mark Cohen, K6EF  
Advertising ..... Terry Finn, AA6T 650-366-9111  
aa6t@arrl.net  
News ..... Terry Finn, AA6T 650-366-9111  
Member Profiles ..... Terry Finn, AA6T 650-366-9111  
terry@incognitoservices.com  
Technical Tips ..... Vic Black, AB6SO 650-366 0636  
ab6so@smrn.com

\*\*\*\*\*  
★  
★ **LIFE MEMBERSHIP** ★  
★ Awarded by Action of the PAARA Board ★  
★ **Ron Panton, W6VG July 2003** ★  
★ **Joe Gomes, KB6HDC May 2004** ★  
★  
\*\*\*\*\*

PAARAgaphs E-mail address: [k6uro@arrl.net](mailto:k6uro@arrl.net)

Submit material for PAARAgaphs by the 15th

Text: WORD, RTF, or ASCII  
Photos: JPEG or TIFF raster images

Missing PAARAgaphs, too many copies, wrong name or

Call on label? Contact Database Manager:

Rick Melrose K6RDM, 408-732-2247, [k6rdm@arrl.net](mailto:k6rdm@arrl.net)



## Technical Tip

### Battery Types

by Vic Black, AB6SO

Batteries are made up of series and parallel circuits of cells. Voltage depends on the type of chemistry making up the cells and the amount of chemical energy stored in the cells. Ni-Cad cells nominally produce 1.2 volts. Other cells produce 1.25 volts (alkaline-manganese), 1.35 volts (mercury-oxide), 1.4 volts (zinc-air), 1.55 volts (silver-oxide), 2 volts (lead acid), 3 volts (lithium-manganese), or 4 volts (lithium-ion).

For Amateur Radio uses, batteries are classified as Primary (i.e. non-rechargeable) or Secondary (i.e. rechargeable). Most commonly used rechargeables are lead acid, nickel-cadmium (Ni-Cad), nickel-metal hydride (Ni-MH), and rechargeable alkaline batteries.

Lead acid batteries may be either wet cells or sealed lead acid (gel-cells).

Wet cells are made in normal configurations and deep discharge types. Deep cycle batteries generally have heavier metal plates to withstand heavier current draw and deeper discharges without warping and shorting the plates.

Lead acid batteries are designed for heavy current draw for a short period of time, such as for starting a car engine, followed by immediate recharging. They last longest when kept on a low-level charge at all times to prevent lead sulfide from depositing on the plates, thus rendering them useless. Wet cells must be kept upright at all times to prevent leakage of dangerous liquid sulfuric acid. The electrolyte level must be checked regularly. They should be used in well-ventilated areas and care must be exercised to avoid sparking since they produce explosive hydrogen gas during use and charging.

Lead acid battery explosions are more common than usually assumed.

Perhaps

5 – 10% of all people have been involved at some time with a battery explosion and exploding automobile batteries are a major cause of blindness.

Avoid wearing metal jewelry when handling any batteries. A shorted battery can dump all of its energy in a surprisingly short period of time and burn off a finger, for instance.

Gel-cells may be used in any position. Their electrolyte is contained in a gel impregnated glass fiber matting making them safer to use than wet cells.

They must be recharged at a lower rate than for wet cells in order to keep temperatures low and to avoid boiling off electrolyte. Lead acid types produce 2.0 volts per cell (i.e. 6 cells make one 12 volt battery). Voltage drops off gradually during use on all lead acid batteries (wet cells or sealed gel cells). Lead acid batteries can be kept on trickle, or maintenance, charge indefinitely so they will always be available during power outages.

Ni-Cads are capable of producing a steady voltage for a long period of time followed by a sudden drop in voltage. They produce 1.2 volts per cell so more are needed to equal the voltage produced by lead acid types (i.e. 10 Ni-Cads cells make one 12 volt battery). Ni-Cads are best stored in a discharged condition then recharged just before use. For emergency use, they are well

suitable to solar charging as they often are being stored in a discharged state when the power mains suddenly become unavailable. Ni-Cad batteries exhibit higher internal resistance than lead acid types. This causes them to self discharge faster than stored lead acid batteries. Current capacity, measured in milli-Amp-Hours or Amp-Hours, depends on the amount of metal in the cells. Usually, higher current capacity batteries will weigh more than similar sized batteries of the same type that produce lower current capacity. The higher capacity results in higher cost as well.

Ni-MH batteries are similar to Ni-Cads, but can produce higher current capacity in packages of the same size and weight. Internal resistance is higher than for Ni-Cads so they may self discharge more quickly during storage. Ni-Cads and Ni-MH batteries can self discharge at a rate of 10 – 25% per month.

Rechargeable alkaline-manganese batteries are similar to primary alkalines, but generally have heavier outside jackets to withstand high stresses of expanding internal gases during recharge. Sold under the Renewal brand name, they are best recharged using the proprietary chargers sold by the manufacturer in order to avoid venting of the battery, electrolyte ejection and even explosion that are possible from using a more aggressive higher current Ni-Cad charger. They are conservatively rated for 20 recharge cycles, whereas Ni-Cads may recharge 500 to 1000 times.

Rechargeable alkalines are not as popular as other types because they do not offer a normal deep discharge as allowed by true rechargeables. Also, the recharge time (about 12 hours) is out of proportion to the discharge time (about one hour) so they tend to be less economical in the long run.

Recharging batteries depends on the type of cell involved. Lead acid batteries are recharged at a CONSTANT VOLTAGE. They draw heavy current at first and then taper off to a low current draw as they reach full charge.

Ni-Cads and Ni-MH batteries require charging at a low, CONSTANT CURRENT. The voltage will rise gradually until it reaches full charge, then will start to diminish if the batteries are overcharged. The best way to charge them is with a charge controller which monitors internal temperature rise of the cells and their voltage as the recharge progresses. Otherwise, a timer may control the recharge cycle. Ni-Cads are normally recharged at one tenth of their final current capacity. Theoretically ten hours of charging should bring them up to full charge, but because of internal losses, they must be recharged for another 50% to bring them up to full capacity. A constant voltage source of the proper voltage will work if it produces enough current for 14 to 15 hours. Fast chargers using charge controller chips are available and convenient, but the life of the batteries will be longer if they are slow charged.

Because Ni-Cads are often overcharged, the voltage at the start of use will be lower than optimum. This causes them to discharge quicker in normal use and has given rise to the myth of the “memory effect” which implies that the battery somehow remembers being at a lower charge at some time in the past.

Using the battery until it reaches normal discharge on the next cycle followed by carefully recharging to full voltage will prevent this.

(Continued on page 52 Battery Types)



## "Tenna Topics"

### A 12-Band Portable Wire Antenna by Vic Black AB6SO

At the January, 2003 PAARA meeting, I demonstrated a portable wire antenna for less than \$30 to cover 11 Amateur Radio bands plus the CB band.

The basis of the antenna is a commercial VHF dipole, purchased for \$17 from Mitch Cipriano AE6AI. He sells them on his web page <http://www.hamstop.com> along with other items such as power distribution panels, PSK31 rig to computer interfaces and Andersen Power Pole connectors, items that are not available from local retailers. The antenna features a molded center insulator with molded in coax cable and two 4 millimeter studs for mounting the telescoping black anodized elements. The dipole can be mounted either vertically or horizontally. With the elements compressed, the antenna resonates on 440 MHz. Partially extended, the elements radiate on 222 MHz and when fully deployed will cover the 2-meter band. Each antenna comes with 12 feet of RG-174 coax terminated with an FME coax adapter and your choice of one screw on adapter for SMA, BNC or UHF connections. Mitch sells optional connector adapters for very reasonable prices.

An optional homebrew tuning aid for your VHF/UHF antenna would be a short length of white wire with a large ring lug on one end. Slip the lug over one of the telescoping radiators and pull it out to the opposite side of the antenna. Adjust the radiator to a predetermined mark on the wire for the correct length. Do the same on the second side of the antenna to finish setting the correct length before transmitting.

The rest of the antenna has been described in various QRP journals. It consists of two camping clothes drying lines made by Coleman, the ice chest company. The clothes lines look like squat toy yo-yos or small carpenter chalk lines and cost about \$4 each from K-Mart. Each reel holds about 7 yards of nylon line. Pull the line out to its end. Then turn the two halves of the reel counter clockwise about ¼ turn and the reel will disassemble.

Inside there's a reel with a keyhole to capture the nylon line. Replace the line with wire to make a variable length antenna. I found that #22 PVC covered stranded wire allows me to put 35 feet into each reel. Two reels are enough for a dipole on 40 meters and the upper HF bands.

Smaller diameter wire would allow more wire to be added, but you would have to double the amount of wire for the next lower Amateur band and small wire could fall off of the internal reel and jam it. I chose white wire so I could mark it using a permanent marker to indicate the correct length for various bands. A similar design advertised in Worldradio, the "Yo-Yo-Tenna", is sold commercially by DWM Communications for about \$37 including shipping and handling (<http://QTH.com/dwm>).

Solder #8 X 22 gauge ring lugs to the wires on the reels. They're a good fit over the 4mm studs on the VHF antenna center insulator. I also found some "mirror hangers" for 49 cents each at Orchard Supply Hardware. They have a #8

mounting hole and will fit over the center insulator studs. The hangers can be used to strain relief your antenna wire.

For HF use, remove the telescoping elements from the center insulator and attach the two wire reels using the ring lugs, 4mm nuts and mirror hanger strain relief brackets. Another option is to use the telescoping elements instead of 4 mm nuts. At HF the compressed 2-meter elements present a high impedance path and are ignored by your HF signal, although they add weight to the center of the antenna.

Pull out enough wire for the band you want to use the antenna on, wrap the wire around the hook on the clothes line reel and tie the reels to trees using the nylon cord you removed from the reel. The antenna can be mounted vertically, horizontally or as an inverted VEE. Only one reel can be used if you have an antenna tuner for random wire antennas (high impedance end fed, or voltage fed). Another option is to attach one wire directly to your radio without a feed line and mount the other below and horizontally as a counter poise (with the 'hot' wire mounted vertically this is sometimes called an "Upper and Outer").

If you don't need the VHF/UHF option, make only the HF wire version and use a dipole center insulator or a BALUN for the feed coax connector. With the VHF option, the antenna covers the 40, 30, 20, 17, 15, 12, 10, 6 and 2-meter bands, as well as 222 MHz, 440 MHz and the 11-meter CB bands.

One question that arose was "What happens to the wire inside the reel when you're transmitting?" When you reel out enough to be resonant on your chosen band, the rest of the wire, rolled up in a ball, is seen by your signal as a high impedance path. The signal ignores it. Another way to think about it intuitively is that your signal will only fit on a piece of wire the correct length. The lump on the end is ignored. Don't let the lack of an antenna keep you off the air. This is a great little antenna for portable and temporary use and can be used inside as well as outside. It handles 100 watts easily.

~Vic AB6SO

---

(Continued from page 51 Battery Types)

Most common primary batteries are carbon-zinc and alkaline types. Carbon-zinc batteries have low current capacity and short life (about half of that of alkaline-manganese types). Their main advantage is low cost. Alkaline batteries exhibit high current capacity, long shelf life (especially if stored in cool temperatures, such as a refrigerator) and relatively low initial cost compared to rechargeables. Self discharge rate can be as low as a few percent per year. They make fine handie talkie batteries since they are always ready for use and are readily available from retail stores when needed. They produce 1.50 volts per cell.

~Vic AB6SO

Missing PAARAgaphs, too many copies, wrong name  
 or Call on label? Contact Database Manager:  
**Rick Melrose K6RDM**, 408-732-2247, [k6rdm@arrl.net](mailto:k6rdm@arrl.net)  
 or the PAARA computer expert, **Mark Cohen, K6EF**,  
 with a copy to the  
 PAARA Secretary, **Adrianus Schrauwen, W6AJS**



photo KR6DD



AB8PO at pizza ragchew after meeting

photo KR6DD



AA6T Addressing the 4 07 06 Meeting

photo KR6DD



**THE AMERICAN RADIO RELAY LEAGUE, INC.**

**ADMINISTRATIVE HEADQUARTERS NEWINGTON,  
CONNECTICUT, u. s. A. D6111**

October 14, 1971

Mr. Ed Gosselin, W1BCN 4 Massachusetts Avenue W. Yarmouth, MA 02673

Dear Ed:

I saw George Hart's letter to you on your early call sign and I can shed some more light on it. In a history of call signs compiled by F. K. Matejka, KSRS, we find this information: "In the same callbook year, the radio inspector of the First District, through choice or ignorance of alphabetical sequence, issued 3-letter calls incorrectly. After completing the sequence of AAZ, instead of the following call being ABA, he chose the combination of BAA. This procedure continued with the subsequent letters of the alphabet resulting in all 3-letter licensees having an A for the middle call letter in the first series, a B in the second series and so on.

"The Callbook for 1921 corrected the call letter assignments referred to above. Call letters 1AAA to 1WAZ had the first two letters transposed. In the original, there were no 3-letter calls beginning with X, Y and Z because of their having been reserved for special licenses. As a result, the calls 1ABA to 1CBZ were appropriated to fill in this blank at the end of the A scale and this threw the rest of the B system three letters behind. Continuation in this method of correction threw the C system six letters behind, etc. Suffice it to say, many calls were thus changed."

Since the 1921 Callbook shows you as 1BCN it is quite clear that you must have had 1FBN in the time frame June 30, 1920 to April or May, 1921. We can't get any closer on the date, however.

73,

Sincerely yours

Perry F. Williams, W1UED  
Assistant Secretary for  
Membership Services

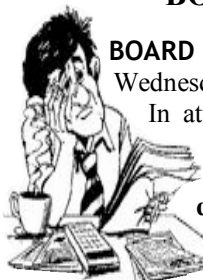
PFW: mct

Open invitation to mystery solvers:

The attached letter was part of a package of memorabilia I purchased at the Livermore flea market a few years ago. The letter, from ARRL, seems to be an attempt to explain to Ed Gosselin, W1BCN, (SK), the connection between his call, 1BCN, in the June 1921 Callbook and a former call, 1FBN, in the June 1920 Callbook. At the moment, I can't completely fathom the explanation. If anyone has a contribution to this explanation or a 1920 Callbook which would provide some clarification, please get in touch. I'm 'good in the book' or write to the PAARAgaphs editor. de, Gerry, N6NV.

**PAARA Radio NET every Monday evening at 8:30 P.M. local time on the  
145.230 –600 MHz repeater, PL tone off**

## BOARD OF DIRECTORS MEETING.



### BOARD OF DIRECTORS MEETING

Wednesday evening, April 12, 2006

In attendance were the following PAARA members.

**President Terry Finn, AA6T; Vice President Peter Sheerin, K6WEB; Secretary Adrianus Schrauwen W6AJS; Treasurer Ron Chester W6AH (late arrival) and Director Gerry Tucker (late arrival).**

**The Directors Kristen McIntyre, K6WX and David Ungar, W6DH. Were excused because of Passover.**

Visiting the Board meeting were: Membership coordinator **Vic Black, AB6SO**; Editor **Wally Porter, K6URO**; Badge Coordinator **Doug Teter, KG6LWE**; QSL Manager **Rob Riley KG6HVW**; Technical Coordinator **Joel Wilhite, KD6W**.

Initially there was **NO Quorum**.

President Terry Finn started general discussions at 19:45 hrs.

The Minutes from the March 8, 2006 Board meeting as well as the Treasurers Report were tabled until next BOD meeting.

An inquiry was made to the absence of Andreas Junge (N6NU), it was suggested to contact him for a welfare check.

The PAARA Data base was another item of discussion. Peter stated that he will be passing the database to **Mark Cohen K6EF and Rick Melrose KR6RDM**.

Flea Market, Joel Wilhite KD6W reported on the proceedings of the recent Fleamarket.

The PAARA Grant request: Joel proposed to model the grant request around field day requirements. He is still looking for input from members as to what equipment to include for the request. Additionally the PAARA bylaws should include requirements for such equipment funding. PAARA should also have a relationship with ARES.

Around this time a Quorum has formed because of the arrival of Gerry Tucker and Ron Chester.

Field day: Ron Chester and Doug Teter discussed items such as Station location, antenna placement.

The PAARA Website was discussed, Peter Sheerin has problems with accessing the website in order to make corrections and/or changes. Peter indicated he has no full access to the Website which is under control of Andreas Junge. Peter made a motion to have the control in our own hands and proposed to switch to a different website under club control.

A motion was seconded by Adrianus and unanimously accepted by the board. Peter will email Terry with the necessary verbiage, so Terry can inform Andreas about this decision.

Gerry reported that the Menlo Park insurance matter was taken care of.

The meeting adjourned at 21:15 hours.

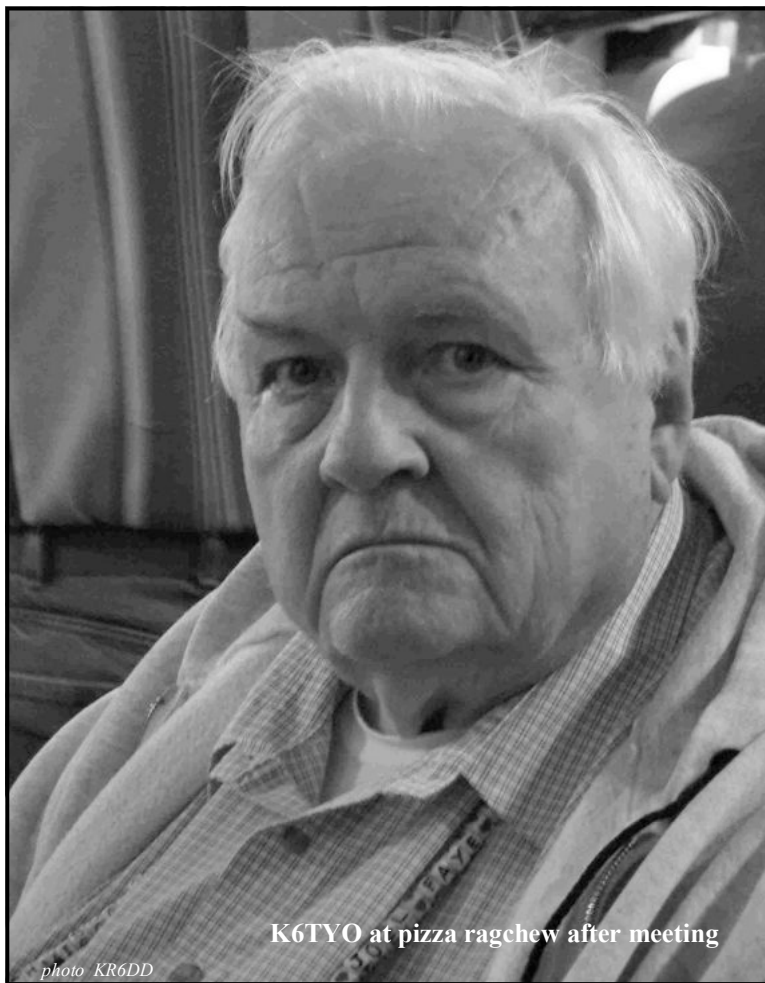
**Respectfully submitted by**

*Adrianus Schrauwen, W6AJS, PAARA Secretary*

## FLEA MARKET THIS MONTH.

Please note that PAARA requires three able bodied members to meet at 5 pm at the Red Cross offices in Palo Alto on Friday, May 12<sup>th</sup> to assist the Red Cross staff in loading the Red Cross van with tables, etc., for the Flea Market the next day. The Red Cross staff will drive the truck down to De Anza College the next morning and set up the portable canteen on the site with assistance from the early, on site, PAARA members.

When the Flea Market is over around 11:30 am on Saturday morning, we require those three able bodied PAARA members to once again follow the Red Cross van back to Palo Alto from the De Anza College parking lot and assist with unloading the truck. We look forward to lots of active participation again on the part of PAARA at this annual fund raiser. Please come on down to at least visit the Flea Market and have a coffee & donut.



K6TYO at pizza ragchew after meeting

photo KR6DD

## Join us for pre-meeting eyeball

**at Su Hong Restaurant**

**1039 El Camino Real, Menlo Park**

Food will be served at **5:30** sharp, so guests will be on time for the PAARA meeting. Those arriving late will be responsible for their own order and bill.





**Field Day 1973**



**Field Day 1975**

At undeveloped Sharon Heights hill

. Notice the trusty old hand crank generator which still works! Not too long before the '73 FD, I bought the hand cranker with \$25 of PAARA treasury funds from Allan Steel at the east end of Whipple Ave.

Andy KR6DD

PAARA,

We are in need of 12 to 15 Ham volunteers for a bicycle event on Sunday, 21 May 2006. Start/Finish is in Menlo Park (Sand Hill Road by Highway 280) starting at 0600 and is "normally concluded by 1500. Lunch is usually provided as well as "snacks and brunch" at the Start/ Finish.

Contact for this event is Phil Stripling, KG6ILU at:

[philip@civex.com](mailto:philip@civex.com)

Please contact Phil directly if you can assist. This event is VERY challenging since it goes "over-the-hill" to the coast, so communications are crucial. There are a couple of spots for people to "park" and relay messages; station themselves at Rest Stops; cover part of the route; assist at Net Control; cover part of the event for a couple of hours; etc.

If in doubt, ask Phil. He WILL have an answer for you!

Thank you very much for your consideration and time.

Jon Mosby, KF6RFQ

Blackberry REACT, Unit 31

650-919-9251 • 650-326-0958 [F]

[blackberryreact@usa.com](mailto:blackberryreact@usa.com)

## **Congratulations: April 7<sup>th</sup> PAARA Raffle Prize Winners**

**1<sup>st</sup> Prize:** Richard Webber WR6J / RIGblaster Plus / Rig to Soundcard Interface

**2<sup>nd</sup> Prize:** Larry Hedberg KD6EUG / High Sierra 6ft. Aluminum "Tripod Deluxe"

**3<sup>rd</sup> Prize:** Rob Goodson N2RAG / Heil "The Traveler" Boomset

**4<sup>th</sup> Prize:** Bob Korte KD6KYT / Vector "smart" 12V Battery Charger

**5<sup>th</sup> Prize:** Gerry Tucker N6NV / Ultimate DX World Map / Laminated

**6<sup>th</sup> Prize:** Rob Riley KG6HVW / ARRL DXCC List

**7<sup>th</sup> Prize:** Robert Johnson KG6UWZ / Hand Crank LED Flashlight

**PAARA Members and Visitors: THANK YOU FOR YOUR SUPPORT of the exciting monthly raffles! Since Feb. 03, 85 Radios, including a Yaesu FT-847, an Icom 706 MK IIG, a Yaesu FT-897D, and TWO Elecraft KX1's have gone to Fellow Hams, THANKS TO YOU!**

PAARA is having a remarkable year in 2006! If you aren't a member, please join PAARA now, and experience fun 2006 events with the "friendliest club around."

K6AK Jim



## PAARA “The Friendliest Club Around”

**Palo Alto Amateur Radio Association, Inc.** [www.paara.org](http://www.paara.org)

**Date and Time: Friday, May 5<sup>th</sup> at 7 p.m.**

**Menlo Park Rec. Center, 700 Alma St., Menlo Park, CA.**

**Welcome Members and Visitors / Raffle Prizes:**

### FIRST PRIZE:



### Super Antennas MP1

**Portable HF 7-450 MHz Antenna with Tripod**

- Additional Tripod Mount Included
- 3.5 - 4MHz with Optional Coil
- QRP to 200W Operation
- Adjust Slider to Frequency and Snug Down Band Lock Screw
- Portable / Easy to Set Up Operation

### SECOND PRIZE:



### “Daiwa CN-801H / SWR & Power Meter” 1.8-200 MHz with Dual Cross Needles

- “Professional Series” illuminated Meter
- Simultaneous Display of Forward / Reflected Power & VSWR
- Power Range 20/200/2kW
- Extra Large Meter Face with Mirrored Graph in .5W Increments
- SO239M Connectors
- 12vdc Plug Provided

**THIRD PRIZE: American Red Cross FR-250 AM/FM/SW Radio / Cell Phone Charger**

**FOURTH PRIZE: RayOVac Battery Charger with Four NiMH Batteries**

**FIFTH PRIZE: “Power Squid”/ 5 Flexible Outlets / 110V / 4 ft. Power Cord / Switch**

**SIXTH PRIZE: ARRL “Large Easy-to-Read Size / 2006 – 2007 Repeater Directory**

**SEVENTH PRIZE: ARRL QSO Log Book**

**Since February 2003, 85 Radios, including a Yaesu FT-847, an Icom 706 MK IIG, a Yaesu FT-897D, and Two Elecraft KX1’s have gone to Fellow Hams. Special Thanks to Bob, Howard, Rick, Mark, and everyone at HRO for their continued SUPPORT!**

*K6AK Jim*

### The ARRL

is asking Hams in the 14<sup>th</sup> congressional district in California to write Anna Eshoo a letter supporting House Resolution 230. Details on the resolution are available on the Library of Congress web site at:

<<http://thomas.loc.gov/cgi-bin/bdquery/z?d109:h.res.00230:>>

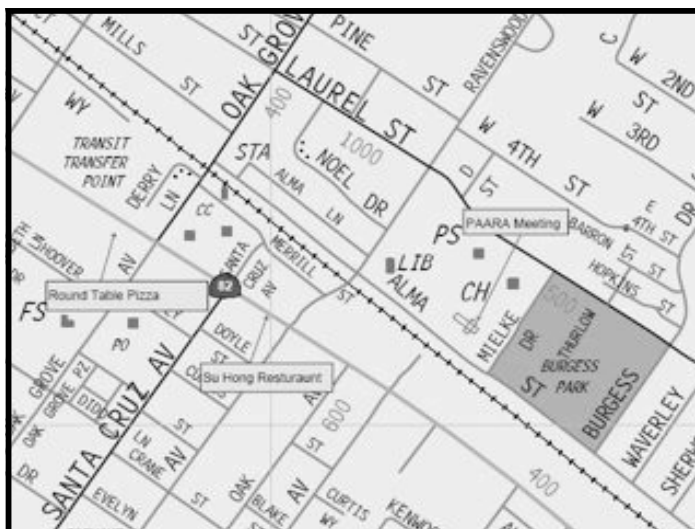
The ARRL's position on the resolution is available at

<[http://www.arrl.org/#art\\_6298](http://www.arrl.org/#art_6298)>

Representative Eshoo's web page is

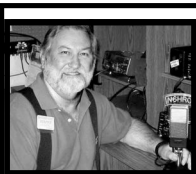
< <http://www-eshoo.house.gov/> >

-- Mikel, kn6qi



### Directions to PAARA meeting:

<http://paara.org/meetings/>



*Howard at HRO says: "HAM accessories and gift certificates are available at HRO. Congratulations to PAARA on a successful year."*

### HAM FEST

at

### ANGELINO'S RESTAURANT

3132 Williams Road, at Winchester Blvd.

2:00 PM

Second Sunday each month

[www.Angelinosrest.com](http://www.Angelinosrest.com)

## PAARA Radio NET

and Swap Session  
 every Monday evening  
 8:30pm local time

on the

**145.230 –600 MHz repeater**

*PL tone off*

*control operators:*

Week	Operator
1 <sup>st</sup> Mon.	Pink Foster, KG6ILA
2 <sup>nd</sup> Mon.	Peter Sheerin, K6WEB
3 <sup>rd</sup> Mon.	Peter Sheerin, K6WEB
4 <sup>th</sup> Mon.	Bill Rausch, AA6PA
5 <sup>th</sup> Mon.	<b>Volunteer!</b>

**Palo Alto Amateur Radio Association**  
**P.O. Box 911, Menlo Park, California 94026-0911**  
 Club meetings are on the first Friday of each month, 7:00pm at the Menlo Park Rec Center, 700 Alma Street, Menlo Park, CA.  
 Radio NET & Swap Session every Monday evening, at 8:30pm, on the 145.230 –600 MHz repeater, PL tone off.  
 Membership in PAARA is \$18.00 per calendar year, which includes one subscription to PAARAgaphs \$6 for each additional family member (no newsletter).  
 Make payment to the Palo Alto Amateur Radio Association, P.O. Box 911, Menlo Park, CA 94026-0911  
 Permission is granted to reprint from this publication with appropriate source credit.



*Food will be served at 6:00 sharp, so guests will be on time for the PAARA meeting. Those arriving late will be responsible for their own food order.*

**5:30 pm—at Su Hong Restaurant**  
**1039 El Camino Real**  
**Menlo Park**

*across from Kepler's Book Store  
 on El Camino Real  
 Walking distance from Caltrain!*

## PAARA BADGES



To order one,  
 contact our Badge Coordinator:

**Doug Teter, KG6LWE**  
 dteter@wzwi.com

# W6AZ



Ron Chester  
 Santa Clara  
 (408) 243-2221  
 Ron@taxhelp.com

Tax Preparation & QuickBooks Consulting - Ham Discount



## VENUS CAFE

CAPPUCCINO • LATTE • MOCHA  
 CROISSANTS • MUFFINS • PASTRIES  
 BREAKFAST • SANDWICHES • BURGERS  
 ICE CREAM • SHAKE • FLOAT

2655 Broadway Ave (At El Camino Real) • Redwood City • Ca. 94063  
 • Telephone: (650) 368-9200

## SCANNERS UNLIMITED

1656 EL CAMINO REAL  
 SAN CARLOS, CA 94070  
 (650) 573-1624

SCANNERS, HAM RADIOS, CB  
 RADAR DETECT .SHORTWAVE  
 ANTENNAS, ACCESSORIES  
 BRING THIS CARD IN FOR A 15%  
 DISCOUNT ON ACCESSORIES  
 5 % DISCOUNT ON RADIOS

# PowerFlare®

PowerFlare® safety lights:  
 Ultra-rugged 360 degree LED beacon  
 for your emergency kit, car, home ...  
**Order on eBay** or call 650-322-2476  
 (search for "PowerFlare")

A SMALL CHURCH WITH A BIG HEART



FIRST BAPTIST CHURCH  
 OF MENLO PARK

FRIENDLY • BIBLICAL • CARING

REV. RICK LINE, KG6TMD  
 SENIOR PASTOR  
 PASTOR@FIRSTBAPTIST.COM

1100 MIDDLE AVENUE  
 MENLO PARK, CA 94025  
 TEL: 650-323-8544  
 FAX: 650-323-8546  
 WWW.FIRSTBAPTIST.COM

# MADONNA'S BAIL BONDS



Ayudamos a la Comunidad Hispana



REDWOOD CITY — 650-366-9111  
 SAN FRANCISCO — 415-495-2245  
 SAN JOSE — 408-266-2245

TERRY FINN CA License # 1A38965 AA6T

234 Marshall Street, UPSTAIRS #3 Redwood City, CA 94063-1550

# HAMSTOP.COM

Great Products • Affordable Prices

Mitchell Cipriano  
 mitch@hamstop.com

467 Reynolds Circle  
 San Jose, CA 95112-1119

888.676.4426 / 408.453.6007  
 408.453.6014 fax  
 www.hamstop.com

AE6AI



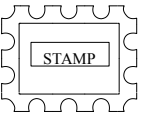
## PAARAgaphs Ad Rates

PAARAgaphs accepts paid advertisements from non-members. (short personal ads remain free for members in good standing). All ad rates listed are per issue only.

1. Not-for-profit ads by association members for ham-related items and wants. No cost for business card-size ads (additional space at \$2.50 per business card size).
2. For Profit organizations and/or individuals: \$5-business card size, \$25-half page, \$50 full page or back cover.

These fees may be reduced or waived in exchange for a valuable consideration that is given to the Association or its general membership. Such consideration must be in addition to any existing arrangements with the association. The PAARAgaphs editors reserve the right to reject any ad deemed to be not in the best interest of the Association.

All fees payable in advance by the year with "scanner-ready" copy or text-only ads. Give payment and copy to Terry Finn, AF6TF



# PAARAgaphs—May 2006

Palo Alto Amateur Radio Association, Inc.  
PAARAgaphs Newsletter  
P.O. Box 911  
Menlo Park, California 94026

## FIRST CLASS MAIL

photo KM6EP



### Lets Talk Field Day

Sunnyvale, 510 Lawrence Exp. #102 (408) 854-6046

**12 STORE BUYING POWER**

**KENWOOD**

**TS-2000** HF/VHF/DHF TCVR  
 • 100W HF, 50W VHF • 50W TCVR  
 • 1000 channels • 1000 memories  
 • If Sharp DSP • Built-in TNC, DX sweeper circuit  
 • Bechert front key panel  
**Low Intro Price!**

**ICOM**

**IC-706MKIIIG** HF/VHF Transceiver  
 • 100W HF, 50W VHF  
 • 1000 channels • 1000 memories  
 • If Sharp DSP • Built-in TNC, DX sweeper circuit  
 • Bechert front key panel  
**Low Intro Price!**

**ALINCO**

**U-196T** 2M HT  
 • 5 Watt out  
 • 1000 channels • 1000 memories  
 • If Sharp DSP • Built-in TNC, DX sweeper circuit  
 • Bechert front key panel  
**Low Pricing!**

**TH-D7AGI** 2M/440

• 2M/440 Dual Band  
 • Built-in 120W/50W Built TNC  
 • APCX Compatible  
 • 1000 Channels • 1000 Memories  
 • 200 Wm. CTCSS  
 • VCH-Messaging Control  
**Low Pricing!**

**IC-756 PRO III** All mode Transceiver

• 100W HF, 50W VHF • 50W TCVR  
 • 1000 channels • 1000 memories  
 • If Sharp DSP • Built-in TNC, DX sweeper circuit  
 • Bechert front key panel  
**Low Intro Price!**

**DR-1351T** 2M mobile

• 50W output • 1000 channels • 1000 memories  
 • 100 Wm. CTCSS • 200 Wm. CTCSS  
 • 1000 channels • 1000 memories  
 • If Sharp DSP • Built-in TNC, DX sweeper circuit  
 • Bechert front key panel  
**Low Pricing!**

**SUNNYVALE, CA**  
 510 Lawrence Exp. #102, 94035  
 (408) 736-9496  
**(800) 854-6046**  
 Rick MSD, Co-Mgr.  
 Howard WGHDC, Co-Mgr.  
 So. from Hwy. 101  
[sunnyvale@hamradio.com](mailto:sunnyvale@hamradio.com)

**OAKLAND, CA**  
 2210 Livingston St., 94606  
 (510) 534-5757  
**(800) 854-6046**  
 Mark, W7YVA, Mgr.  
 1-880 at 23rd Ave. ramp  
 oakland@hamradio.com

**COAST TO COAST**  
**FREE SHIPPING**  
Exp. • Best Deal Over \$100

**Best Features From The Store nearest To You!**

**YAESU**

**VX-7R**  
 • 50W HF, 50W VHF • 50W TCVR  
 • 1000 channels • 1000 memories  
 • If Sharp DSP • Built-in TNC, DX sweeper circuit  
 • Bechert front key panel  
**Low Intro Price!**

**FT-857D**

• 100W HF, 50W VHF • 50W TCVR  
 • 1000 channels • 1000 memories  
 • If Sharp DSP • Built-in TNC, DX sweeper circuit  
 • Bechert front key panel  
**Low Intro Price!**

**FT-1000MP MKV** FT-7BMS

• 100W HF, 50W VHF • 50W TCVR  
 • 1000 channels • 1000 memories  
 • If Sharp DSP • Built-in TNC, DX sweeper circuit  
 • Bechert front key panel  
**Low Pricing!**

**TM-D700A** 2M/440 Dualband

• 50W VHF, 50W UHF • 50W TCVR  
 • 1000 channels • 1000 memories  
 • If Sharp DSP • Built-in TNC, DX sweeper circuit  
 • Bechert front key panel  
**Low Intro Price!**

**IC-756 PRO III** All mode Transceiver

• 100W HF, 50W VHF • 50W TCVR  
 • 1000 channels • 1000 memories  
 • If Sharp DSP • Built-in TNC, DX sweeper circuit  
 • Bechert front key panel  
**Low Intro Price!**

**DR-1351T** 2M mobile

• 50W output • 1000 channels • 1000 memories  
 • 100 Wm. CTCSS • 200 Wm. CTCSS  
 • 1000 channels • 1000 memories  
 • If Sharp DSP • Built-in TNC, DX sweeper circuit  
 • Bechert front key panel  
**Low Pricing!**

**U-196T** 2M HT

• 5 Watt out  
 • 1000 channels • 1000 memories  
 • If Sharp DSP • Built-in TNC, DX sweeper circuit  
 • Bechert front key panel  
**Low Pricing!**