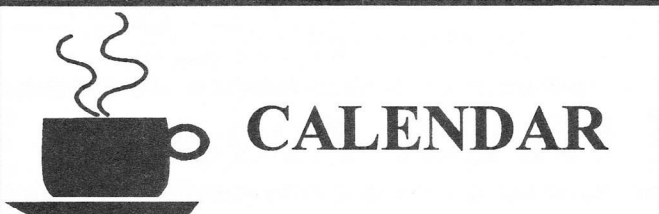




PAARAgraphs

Celebrating 60 years as a *real* ham radio club—Since 1937

Newsletter for the Palo Alto Amateur Radio Association, Inc.



CALENDAR

- August 1, **PAARA Meeting, 7:30**
Menlo Park Recreation Center
700 Alma Street, Menlo Park 7:30-9:30 PM
- August 6, **PAARA Board Meeting, 7:30**
Red Cross Blvd. 400 Mitchell Ln., Palo Alto
- Sept 5, **PAARA Meeting, 7:30**
- Sept 10, **PAARA Board Meeting, 7:30**
- Oct 3, **PAARA Meeting, 7:30**
- Oct 4, **PAARA Auction (tentative)**
- Oct 8, **PAARA Board Meeting, 7:30**
- Oct 17-19, **PACIFICON 97**



Program

August 1, 1997
7:30 P.M.

Speaker:

Not confirmed at press time
Check on NET Monday night before meeting

PAARA Radio NET every Monday evening, at 8:30pm,
on the 145.230-600 repeater MHz, PL tone off.●



PRESIDENT'S PONDERINGS

de VIC BLACK, AB6SO

June was a big month for PAARA members. The annual Summer Picnic on June 7 was a complete success with everyone enjoying warm companionship, fine food and drink, valuable door prizes and pleasant weather under a canopy of fruit trees and antenna towers. **Helga and Ron Pantan W6VG** graciously offered their garden for the picnic which saw 28 PAARA members and guests in attendance. Nearly everyone present won door prizes which included four potted fuschias, two \$25 Trader Joe's gift certificates, two cameras, a road atlas, a stainless steel travel coffee mug, tools, battery packs and pocket flashlights.

As Picnic Chairman, I would like to thank everyone who helped make the event a big success. Special thanks go out to **Joan Porter K6URO-XYL** who purchased the fuschias for door prizes. **Bob Korte KD6KYT** loaned barbecue tools and tended the barbecue. **Gerry Tucker WA6LNV** supplied ice buckets which were filled with ice provided by **Les Zwiebel WA6ORZ**. **Les** also decorated the picnic area with balloons. **Andy Korsak VE3FZK** supervised the entertainment with a hidden transmitter hunt. **Fred Canham K6YT** delivered picnic supplies from the club's **Field Day/Picnic** cache. **Dave Bailey WS6W** shopped for the Deli Plate which was enjoyed by the picnickers. Several volunteers made setup and clean up quick and pleasant tasks.

PAARA's Field Day site, located at the end of Bay Road in East Palo Alto, was a winner once again. Access is through a wildlife refuge to the Palo Alto Boat Works at Cooley Landing, a small peninsula surrounded by salt water. This makes for excellent radio propagation. This site hosted one of the stations in the World Radio Team Championships and is consistently a winner.

Setup started at 11 AM on Friday the 27th and Field Day

(Continued on page 59)Ponderings

Miscellaneous Dates

Flea Market at Foothill

- Mar 8 West Valley Amateur Radio Association (WVARA)
 Apr 12 Palo Alto Chapter, American Red Cross
 May 10 Palo Alto Amateur Radio Association (PAARA)
 Jun 14 San Jose Chapter, American Red Cross
 Jul 12 Santa Clara County Amateur Radio Association (SCCARA)
 Aug 9 South Peninsula Emergency Communication System (SPECS)
 Sep 13 Electronics Museum Amateur Radio Club (EMARC)
 Oct 11 Silicon Valley Emergency Communications System (SVECS)

PAARA Palo Alto Amateur Radio Association
 meets 1st Friday 7:30 each month, Net 145.230 each Monday 8:30,
 contact: Vic Black, Jr. AB6SO, (415)366-0636.

PAARA Auction, Saturday, October 4 (tentative)
 contact Vic Black, AB6SO, (415)366-0636.

EMARC Electronics Museum Amateur Radio Club
 Meets 4th Friday 7:30 each month,
 contact Sheldon Edelman 415-858-2176, Edelman@richochet.net

NCDXC Northern California DX Club
 Meets 2nd Friday each month, repeater for member info 147.360, each
 Thursday 8:00PM, contact Bob Mammarella KB6FEC 408 729 1544.

NorCalQRP Northern California QRP Club
 Meets 1st Sunday each month, contact Jim Cates 3241 Eastwood Rd.,
 Sacramento, CA 95821.

Perham Foundation, contact Jerry Tucker WA6LNV 415-961-3266

SPECS Southern Peninsula Emergency Communication System
 Meets each Monday 8:00PM on Net 145.27, 224.36, 440.80 MHz
 contact Mike Hastings KB6LCJ, 408-243-6745 or 408-249-6909.

SCARES South County Amateur Radio Emergency Service
 Meets 3rd Thursday 7:30 each month, San Carlos City Hall.
 Net is on 144.45 & 444.50 (PL-100) 7:30 Monday evenings,
 contact Dick Collins K6ANN 415-593-8952

SCCARA Santa Clara County Amateur Radio Association
 Operates W6UU repeater 146.385+ Nets: 2m, W6UU, 7:30 Mon; 10m,
 28.385, 8:00 Thur. Meets 2nd Mon each month. Contact Jack R

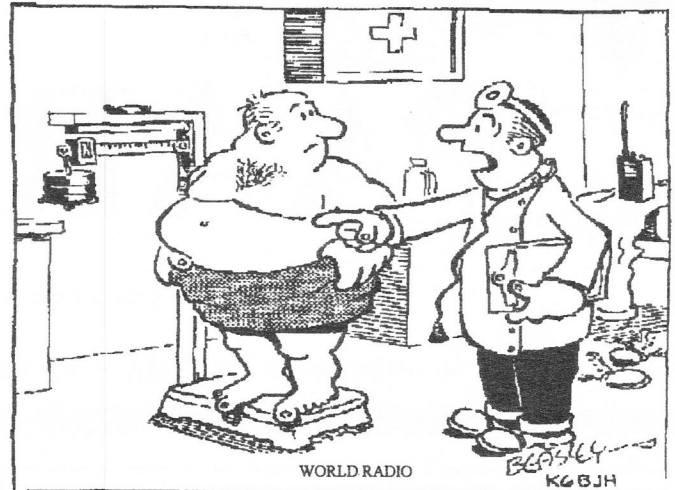
SVECS Silicon Valley Emergency Communications
 Operates WB6ADZ repeater (146.115 MHz+)
 contact Lou Stierer WA6QYS 408 241 7999

WVARA West Valley Amateur Radio Association
 operates W6PIY repeater 147.39+, 223.96, 441.875, 1286.2
 Meets 3rd Wed every month. Contact Glen Lokke Jr. KE6NBO
 at 408 971 8626, or glokke@pacbell.net

Disaster Services, PALO ALTO CHAPTER, American Red Cross
 Meets 3rd Wed. each month 7:30PM, HF, packet, BBS, ATV, OSCAR
 Gateway, NASA satellite, Contact Alan Ball 415-688-0423.

SAN JOSE CHAPTER, American Red Cross
 contact Scott Hensley KB6UOO, 408 249 7093, fsh@richochet.net

VE Exams, 3rd Saturday each month, 11AM, 145.23- PL=100Hz
 American Legion Hall, 651 El Camino Real, R.C.
 contact Joe KB6OWG.



WORLD RADIO

K6BJH

YOU'VE GOT QUITE AN SWR NODE, THERE, --- I'D
 SUGGEST YOU TRIM BACK ON THE OLD FEEDLINE!

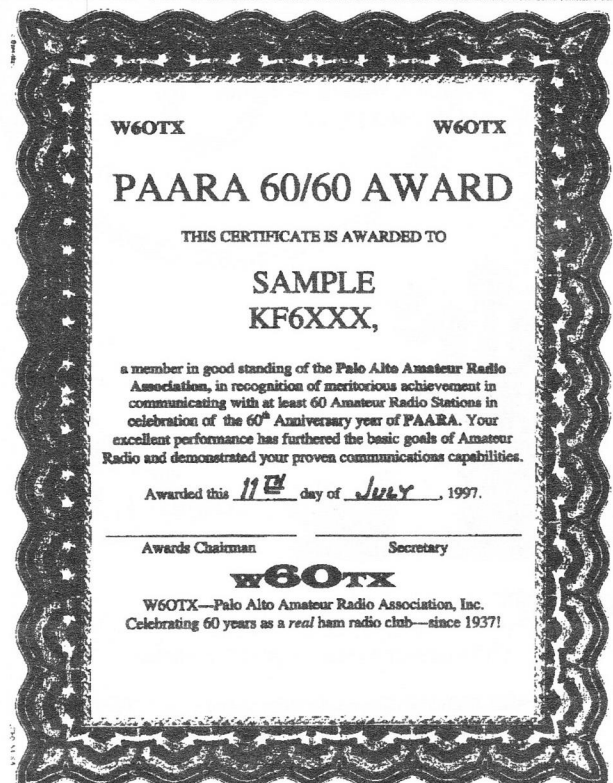
PAARA 7:30 Aug 1

PAARA NEEDS A LOGO

For 60 years we've been anonymous, it's high time we
 showed off our unique identity. So get busy — CREATE!
 Come up with a design that reflects our eclectic interests
 and can be easily reproduced. The winner will be immortal-
 ized by publication in PAARAgaphs forevermore.

HAVE AT IT, GALS & GUYS

PAARA Historian -Steve K6FS



LYNN JOHNSON CONSULTING

I want to buy Excess Electronics

Connectors, ICs, Semiconductors, Components,
 PC hardware & accessories, Late Model Test
 Equipment, OEM Excess Electronic Materials.

PO BOX 21409
 San Jose Ca 95151-1409

408-274-3559 VOC-FAX
 Email, lyntec@cnet.com



PROGRAM NOTES:

PAARA Program,
July 11, 1997

Guest speaker: **Jim Moss, WB9AJZ.**
communication at

“300 gigahertz” *-yes, gigahertz!*

Equipped with several pieces of transmitting and receiving gear to "illuminate" his talk, Jim described communication via - you guessed it - beams of light

Three hundred gigahertz turns out to be a generic term for electromagnetic frequencies in the range of near-infra-red light.

Using chalkboard versions of projection transparencies, Jim described amateur radio laser communications, prefacing his technical remarks with comments about the exposure safety-hazards encountered at four power-levels of signal.

Starting with a graphic presentation of the spectral (i.e. "frequency") response of normal human eyesight, Jim identified the wavelengths of emissions from the three most-used laser diodes, all in the red region of visible light: 635 nanometer, 650 nanometer, and 670 nanometer. With hand-held pointer like projectors, he demonstrated the visual differences among the three "reds" showing that a 2-milliwatt 660 nanometer "signal" is perceived as much brighter than a 4-milliwatt 670-nanometer beam, and a 1-milliwatt 630-nanometer "signal" brighter than the other two.

Jim went on to discuss factors affecting propagation problems encountered in experimenting with radio amateur laser communications: transmitter power-level, area of the transmitted beam, atmospheric transmissivity, transmissivity of the optics used at transmitting and receiving ends of a system, and detector sensitivity. Most quality optics are about 92% efficient, introducing relatively little attenuation into the signal-path as compared against losses due to atmospheric conditions. Atmospheric effects vary as functions of obvious factors like gaseous content, temperature, humidity and barometric pressure, but act differently in different parts of the laser spectrum, depending on wavelength. In general, however, "the clearer it gets, the lower the attenuation" for red-laser communication.

A significant part of Jim's discussion dealt with the effects of divergence of the laser beam - that is, the tendency of the beam to broaden as it travels the transmitter-receiver path. Although starting as a concentrated beam, the laser energy diverges over very small but significant angles as it travels toward the receiving optical device. The amount of energy available to the detector depends not only on path losses, but on the "capture area" (diameter) of the receiver's optical system.

»

» Jim described methods of transmitting several forms of intelligence via laser "carrier", by modulating with an infra-audible subcarrier which is then modulated by the desired signal: speech, digital tones, and so forth.

Due to the nonavailability of the overhead projector for which Jim had prepared a series of transparencies, his presentation actually benefited, in both his and others' opinion, from having the contents of each transparency drawn in chalk, as a succession frames on a blackboard, so that all of his material was displayed simultaneously, enabling him and the audience to refer back to various passages as questions for clarification arose from the floor.☺☺☺

-30-

(Continued from page 57) Ponderings

operations were from 11 a.m. on Saturday until 11 a.m. on Sunday. The club operated in Class 2A (2 HF stations on the air at once with emergency power) along with Novice, VHF, and Packet stations. Field Day Chairman **Gerry Tucker WA6LNV** reports preliminary results comparable to last year's effort on HF, plus points from the Novice and VHF stations and various bonus points.

PAARA Director **Charlie Grandjean WD6FAF** experienced chest pains and shortness of breath during Field Day. He was admitted to El Camino Hospital where an angiogram indicated the need for a coronary bypass. **Charlie** is now recovering nicely under the watchful eye of his oldest daughter, an MD. Look for **Charlie** on the Oakland repeater 147.210 (100 PL).

PAARA operating awards are earned by anyone who participates in the net 20 or more times during the calendar year. Several people had earned their certificates by June. Awards Chairman **Les Zwiebel WB6ORZ** presented awards to **Andy Anderson K6EHS, Steve Stuntz K6FS, Hank Martin W6UCE, Andy Korsak VE3FZK, Dave Bailey WS6W, Vic Black AB6SO, Rich Stiebel W6APZ, Ron Carmichael KD6RFI, Fred Canham K6YT and to himself, WB6ORZ.**

If you haven't earned an award yet, remember that activity is increasing on the PAARA Net and on-air Swap Session. Net Control, **Dave Bailey WS6W**, has done a fine job coordinating QST's, traffic and swap items this year. Be sure to earn your operating award by checking in with **Dave** each Monday at 8:30 p.m. on **W6APZ** repeater 145.230 (-). The 100 Hz PL is turned off for the net to facilitate access by those of you who don't have PL ability.

Many of you don't have e-mail capability, but you are active on packet. **Dan Curry WB6STW** has consented to forward the PAARA e-mail service from the Internet to anyone in the club who would like to receive it by packet. Please send your packet address to **Dan** or me or get it to us at a club meeting. We'll include you in this valuable service which brings you reminders about area activities and late breaking news between issues of PAARAgaphs.

(Continued on page 60) Ponderings

(Continued from page 59) Ponderings

Are you getting your money's worth from your PAARA dues? Last fall we raised the dues from \$6 to \$12, a rather substantial percentage increase. There were quite a few complaints even though we're much less expensive than other area clubs, we have a superior newsletter, interesting and fun club activities and excellent, informative world class speakers. I was asked by several members to justify the increase. Here's what you get in exchange for your \$1 per month.

Newsletter: average monthly direct cost per member is \$1.57 or \$18.84 per year with higher postal costs projected soon. Costs would be higher without the fine volunteer work performed by PAARAgaphs Editor **Wally Porter K6URO**, Database Chairman **Bill McElhinney KA6LZI** and Advertising Manager **Bob Korte KD6KYT**. Monthly meeting room cost: \$25 plus \$12 for the speaker's dinner divided by about 35 average attendance, or \$1.06 (\$12.72 per year) per person, not including the free coffee and cookies provided by **John Buonocore KD6ZL**. Note that some clubs pay nearly \$200 per meeting for room rent! We got a special deal on room rent because of behind-the-scenes negotiating by **Lily Anne Hillis N6PGM**. Summer picnic: average cost nearly \$20 per person because of low attendance.

Hmmm. Let's see. That comes out to roughly \$51.56 in benefits per person projected through the end of the year for anyone who has fully participated in club activities for the first half of the year. Not included in this compilation are costs of doing business such as liability insurance, post office box rent, Field Day trailer DMV registration and the club's Awards Program. If you have e-mail or packet capabilities, you get free electronic reminders of club activities. A new club operating award, the 60/60 Award, is also underway. But, wait! There's more to come.

How do we do it? We depend heavily on volunteers plus income from the Foothill Flea Market and the Autumn Auction. If you feel you're not getting your fair share you can become more active and also volunteer to help with some of the remaining activities that you've asked the PAARA Board to schedule for you.

We are now accepting volunteers for the following club activities: Autumn Auction, New Ham License Class, Officers' Nominating Committee, PAARA 60th Anniversary Special Events Station and the annual Winter Party. PAARA members are also heavily involved in testing new hams through the VEC program and can use more help. As with all of life's activities, you get out of PAARA and your hobby what you put into it. ☺☺☺

BE AN ARTIST WIN FAME & FORTUNE!

A real PAARA contest: design the "60 for 60" certificate. Let your imagination/ingenuity run away - get out the pencils, pens, crayons, magic markers, water colors, sketch-pad, whatever - a real challenge! computer artists - show what you can create!

Submit as many designs as you wish - entries will be judged by a panel of "experts". The winner will receive a prize worth having and maybe possible publication in QST.

Format: 8.5x11 (standard letter size) preferred. Colors: you bet



Flea Market a Huge Success!!

—Vic Black, AB6SO

PAARA's 1997 version of the Foothill Flea Market on May 10, was an unqualified success because of some fine work by many club volunteers. The Flea Market is a major fund raiser for PAARA. It is helping us to build our club infrastructure and is creating a legacy for the future. I'll try to acknowledge everyone who participated.

Doug Schliebus W6HXL, **Dave Bailey WS6W**, **Ron Carmichael KD6RFI** and **Koert Koelman KD6WCI**, did an outstanding job of selling vendor sites. They stayed on later to help at the food stand. Unsung hero **Bill McElhinney KA6LZI**, who keeps the club's data base and produces the PAARAgaphs mailing labels, printed sequentially numbered stick on seller permits with the event information. These were attached to the vendors' vehicles to show who had paid for vendor sites. The permits simplified the job of collecting from vendors who showed up early and slipped past the toll gate. Some vendors were onsite at 2 a.m.!

Fred Canham K6YT was the first to appear at the food concession with the generator trailer and a truck load of hot dogs, condiments, buns and drinks. Ten-year old passerby **Russell Ramos** of San Jose saw **Fred** arrive and offered to help with the setup. **Russell** stayed on to maintain the soft drinks. He also sold donuts, dogs and soft drinks and made change for several hours even though he's not associated with our club and no one in his family is a ham. With that spirit of public service, he'll make a fine ham.

Paul Theken N6FEG worked overtime supplying a truck load of tables, the barbecue, coffee containers and soft drink tubs and then helping late in the day with the clean up. **Don Trask KF6JMQ** and **Charlie Grandjean WD6FAF**, arrived early with 30 dozen donuts. **Charlie** was also one of our distinguished barbecue chefs. **Vic Black AB6SO**, brought 200 pounds of ice. Setup, cooking, food sales, coffee brewing and cleanup occupied **Gerry Tucker WA6LNV**, **Rich Tucker**, **Stan Towle WA6ZGI**, **Judy Schliebus KF6AZZ**, **Len Schumacher WA6HLE**, **Andy Korsak VE3FZK**, **Rosa Korsak**, **Clint Hancock KD6H** and **Bill Rausch AA6PA**. **Clint** put his truck to good use during the clean up phase. **Gerry Tucker** and **Fred Canham** did an excellent job, as always, of coordinating the activities of the other volunteers.

Thanks also go out to the club's officers and board members who did the preliminary planning for the Flea Market. Finally, I want to acknowledge the other organizations such as the Perham Foundation, Foothill College, the American Red Cross and SPECS that made the event possible or loaned concession stand equipment.

A few vendor sites went unsold and the crowd of shoppers was a little lighter than at some Flea Markets earlier in the

(Continued on page 66) Flea Market

PAARA FIELD DAY 1997

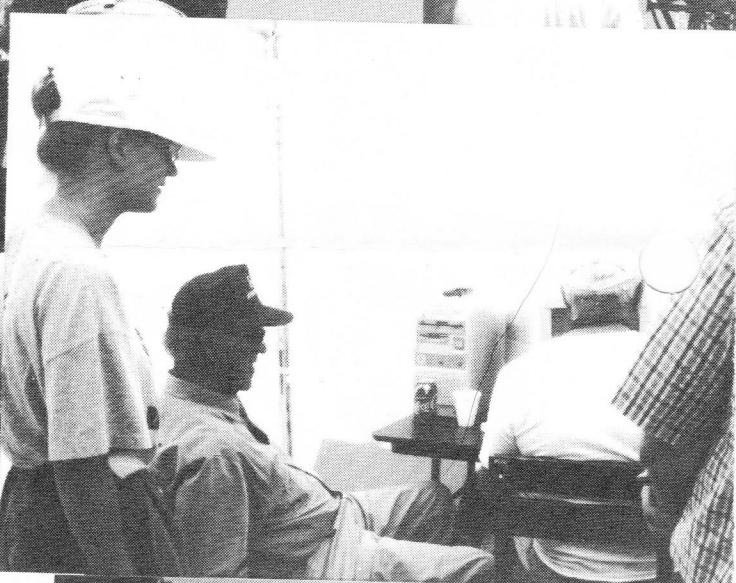
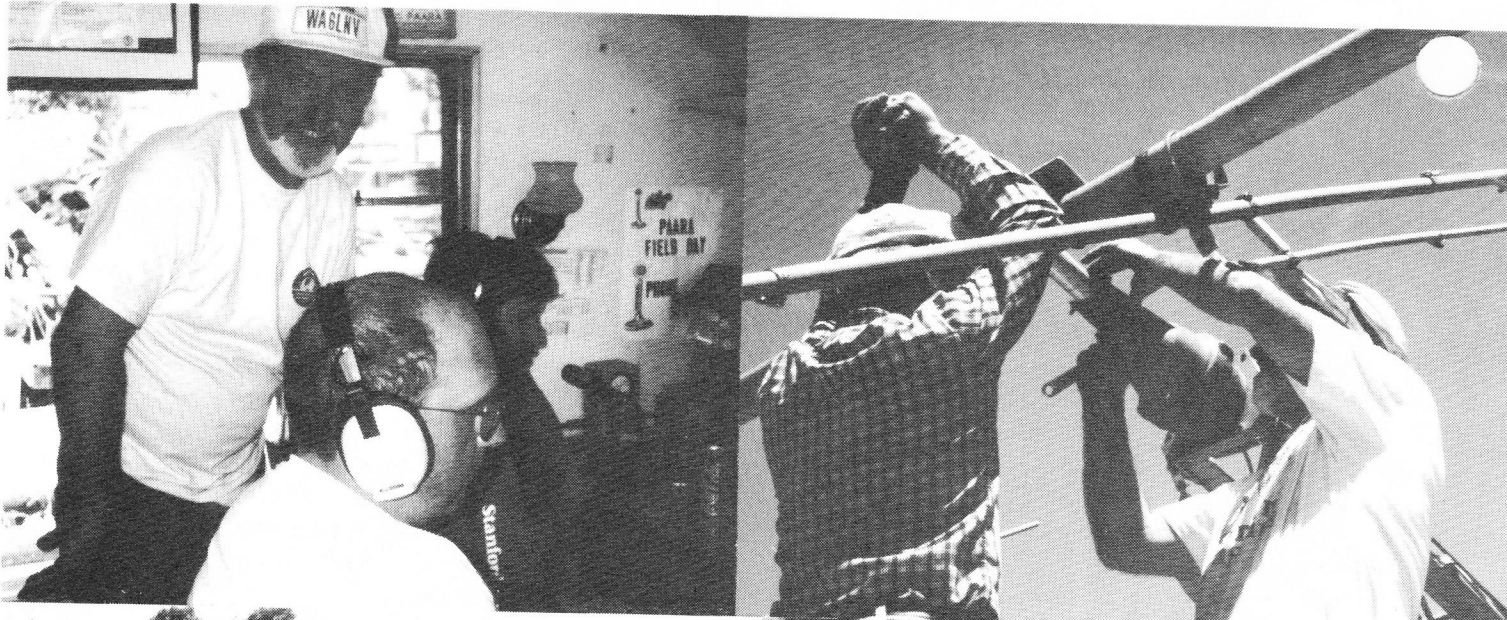


PAARA PICNIC June 8, 1997





PAARAgaphs August 1997
Celebrating 60 years as a real ham radio club—Since 1937



Field Day '97 report:

submitted by

Gerry Tucker, WA5LNV



This years field day effort seemed a little more chaotic than most. Two new aspects were added this year and I guess the result was that we learned a lot. A few months prior to FD, I became determined to get our KLM

40 meter 3 element mono bander up which had not seen the light of day since the time of **K6RU** some 10 or 12 years ago. It had been gathering dust along the side of my garage since we bent the tower trying to put it up the last time. The theory was that we are still in a low enough portion of the sun spot cycle to see a fairly significant shutdown of 20 meters at night and it would really be fun to fill the gap with a big signal on 40. **Fred, K6YT** and I dusted off the boom and elements early in June and determined that it was presently set up for the upper edge of the cw band. A new 69 foot tower was procured, (unfortunately not a nice lightweight aluminum one that the club is still looking for), and it looked like we were pretty well set.

The second new part of FD was the interest in computer logging. **Mac, W6BSY**, the cw captain could support his operation with both logging and keying from the computer. The phone operation was not so well defined. **Jim, KO6GM**, agreed to get his computer logging skills honed and work with **Dave, WS6S**, toward the same end. It was soon discovered that **Terry, N6RY**, was a modest expert in the same program called "CT." It looked like we were in business!

Friday of field day proceeded fairly normally. The 20 meter tower and beam went up. The cw triband beam went up and by 4 o'clock we had the 15 meter beam up on the portable trailer tower. Everyone looked pretty tired, but we decided it was now or never for the 40 meter beam and that we had a couple more hours left in us. Since the location and guying of this tower were new to us, things went a little slowly, but at about 6 o'clock we declared victory.

Saturday morning was the usual last minute panic, with rigs being desributed to the stations, filters installed, and computers set up. Suddenly I was told it was 11:05 local and the cw station was operating! I told the phone station, **Steve, KO6KV**, to plug in the 20 m beam and get going! Various cleanup chores were then attended to. The 80 meter dipoles were hoisted for operation later that night.

The cw station had earlier complained that the 930 cw filters were not working, and about 4 pm said the situation was intolerable. We tried to mate the computer to **Fred's 830**, but without any luck. In fact, we apparently ruined the parallel port on the computer. A backup computer was brought in and operation was resumed on the 930 still with only ssb filters in place. The computer was rushed to the San Jose computer hospital for repair and returned to service about 3 hours later. This whole effort cost us about 2 hours on

the cw station. My thanks to **Mac and Jack, W6ISQ** for managing to operate through these limitations.

The 40 meter beam had been raised about noon on Saturday. It seemed that the rotator wasn't functioning, but we usually leave the beams pointed East anyway so it didn't seem to be a big problem. Along about 8 pm, 40 still seemed pretty dead and someone, (**Terry**, I think), observed that the 40 m reflector seemed to be on the eastern end of the boom! We finally reached a consensus that it was the situation and in fact the rotor and coax cables had been taped to the second tower section. The rotor cable had ripped itself from the rotor the minute we had started to crank the tower up! The coax miraculously survived. But the beam was pointed to Hawaii!. We bit the bullet, nested the tower and I strong armed the boom 180 degrees. The tower was raised again and we were ready to go. About 11 pm **Bill, WB6IYS**, jumped on 40 cw and raved about the results! We got 340 Q's on 40 compared to 367 Q's on 20 where we spent most of the FD effort! Last year by comparison, we had 193 Q's on 40 compared to 414 on 20.

(Continued on page 66) Field Day

Field Day

1. Field Day Call Used W6OTX 2. Club or group name Palo Alto Amateur Radio Assn

3. Field Day location End of Bay Road, East Palo Alto

4. Check if you began set-up prior to 1800 UTC Saturday. X 5. Number of people participating in this operation. 28 6. Number of transmitters in simultaneous operation. 2

7. ARRL/Canadian Section 6 (SCV) 11.

CW				PHONE			
QSOs	Power Output	QSOs	Power Output	QSOs	Power Output	QSOs	Power Output
180		160					
80	20 90w	80	101 90w				
40	340 90w	40	40 90w				
20	367 90w	20	720 90w				
15	48 90w	15	61 80w				
10		10					
6		5	9 40w VHF				
2	19 20w Packet	2	51 40w VHF				
Other		Other	4 20w 220				
Other		Other	7 20w 440				
			9 2m Net Pwr				

8. Entry Class (check one only):
 A. Club or non-club group portable
 B. Non-club portable 1op _____ 2op _____
 list operators _____
 C. Mobile
 D. Home station (commercial power)
 E. Home station (emergency power)

9. Power source
 Generator Battery
 Commercial mains Other

10. Call sign of Novice/Technician station KD6KYT
 (class 2A and above)

797	CW QSOs	100	PHONE QSOs
3	Novice CW QSOs	100	Novice PHONE QSOs
	Total CW QSOs		Total PHONE QSOs
797		1102	

12. Total CW QSOs 797 x 2 = 1594
 Total phone QSOs 1102 x 1 = 1102
 Total QSO points 2696

13. Total QSO points 2696 x Power Multiplier (5 W or less, x5; 150 W or less, x2; over 150 W, x1) X2
 equals Claimed Score (less bonus points) 5392

14. Bonus points
 Attach proof required for all bonus points claimed. All bonus points will be added at ARRL HQ.
 100% Emergency power Message to SM Natural Power
 Media Publicity WIAW Field Day message Packet Radio
 Location in Public Place Messages handled (no.) _____ VHF/UHF
 Information Booth Satellite Other _____

15. This certifies that the station whose call appears above was operated in accordance with the current Field Day rules and that, to the best of my knowledge, the points and scores set forth in the above summary are correct and true. This station was operated in accordance with FCC rules and regulations. I agree to be bound by any decision of the ARRL Awards Committee.
 Date: 3 July 97 Signed: G.H. Tucker Call: WA5LNV signature/call of club president
 F.D. Chairman

16. Full mailing address (please print): Name: G.H. Tucker
 Address: 1117 Ramona St
Palo Alto, Calif 94301

MSD 140 1-97

PAARagraphs August 1997
Celebrating 60 years as a real ham radio club—Since 1937

(Continued from page 65) Field Day

Our vale of tears was not to be complete, however, until about 8 am Sunday, when the small green generator suddenly quit. Fortunately I had Friday asked **Tom, K6JBR**, to unravel the big distribution cable from the PE-95, 10kw generator, and put the contractor's box over by the trailer. This club generator is cared for by **Jeff, N6WLA**, who brings it every year for a backup. I usually run it for an hour or so just to loosen it up. It took about two minutes to transfer the site cables to the box and fire up the PE-95! It was a moment of panic, but all ended well. The little 5kw Onan had burned its points down to the half way mark and refused to go any further. After an hour or so of repair, however it was back on the air, "good as new."

The phone station was a little weak this year, logging only 922 Q's verses 1201 last year. I must not have been cracking the whip in the right places because the phone station logged only 7 Q's between 6 and 7 pm, dinner time!

The VHF station, **Bill, AA6PA** and the novice station, **Bob, KD6KYT** both turned in remarkable performances with 80 and 100 Q's respectively. Unfortunately satellite remained a wish for lack of a few key ingredients. Better luck next year. **Terry, N6RY, Bill, KE6CHQ, and Andy, VE3FZK**, made the packet station work and picked up 19 Q's. Natural power was covered by **Andy** and band helpers that suddenly arrived and disappeared just as quickly. I think their calls were **KE6UDW, KE6ZOY, KF6HOX and KD6PBM**.

One of the fun highlights was the visit of **Anni Tiiovola, OH4JGE**, (visiting from Finland), who had read about our exploits and came down and operated for a while. **Lily Anne, N6PGM**, came down for a couple of hours and put her special touch on the steaks. Special thanks to my wife **Jackie** who provided three salads, any one of which would have been sufficient.

A few special workhorses showed up for putting up and taking down, **Len, WA6HLE; Ron, KD6RFI; Dan, WB6STW, Wally, K6URO; John, KD6ZL; Charlie, WD6FAF**; (who had heart trouble after going home and ended up with a double bypass a couple of days later!). And special thanks to my brother **Rich, nc**, who was my right hand man before and after Field Day. It was a great Field Day effort and I am Looking forward to next year.

Our final score was **5392 plus 700 bonus points**. Look for our place in 2A in next November's QST. Hopefully we won the plaque this year. ☺☺☺ de **Gerry, WA6LNV**

Good things come in small
packages from Wilderness Radio

ULTRA LOW CURRENT DRAIN
TRANSCIVERS, KEYERS, FREQUENCY
COUNTERS, NOISEBLANKER for the
Active QRP Enthusiast
415-494-3806 Mon-Sat 10-6
WILDERNESS RADIO
pob 734
Los Altos, CA 94306

(Continued from page 60) Flea Market

year (maybe the competition from Mother's Day affected attendance). Even so, the shoppers who attended appeared to be in a spending mood so everyone was happy. The weather was cooperative and added to our sales. It started out overcast and cool so we sold lots of coffee. We sold out of donuts early in the day. After the fog burned off we did a steady business with hot dogs and cold drinks. The day started at 5 a.m. and finished up at about 2:30 p.m. We're documenting our efforts this year so that the events will become easier to manage with each passing year.

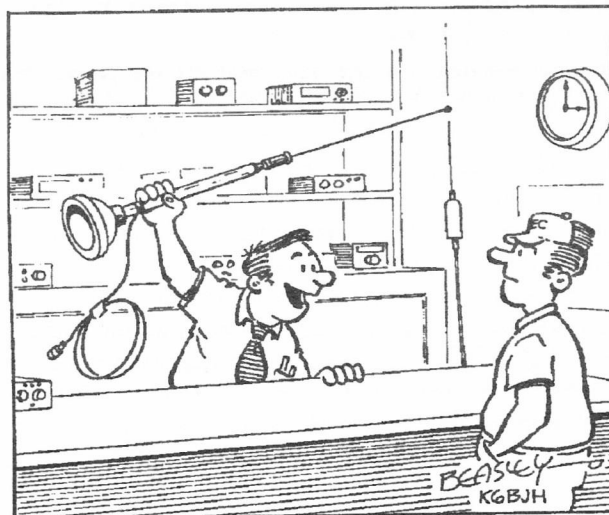
I hope I haven't forgotten anyone. It's difficult to keep track of everyone when they're spread out over several acres intermingled with several thousand people. All of the work done in a spirit of cooperation is greatly appreciated by your club mates. My sincere apologies go to anyone I may have missed in this report.

If you were unable to participate this year, please keep in mind that next year we'll have a very busy month of June. We'll have our monthly club meeting, the board meeting, Foothill Flea Market, Summer Picnic and Field Day all in one month. Plan to participate in at least one of those fun activities next year!

TNX es 73.



VE Today is Saturday the 19th of July, the summer doldrums, the hot weather has hit, today was the quietest VE day in memory. Only 3 applicants for written tests, and only 1 applicant trying his skill at CW. A boring day compared to last months 22 applicants. On hand were the usual crew, **Joe, Bill, Dan, Gene and Ron**. It was a shame **Gene** had to pay the bridge toll for so few tests. Oh well, less qrm.
73, **Ron W6VG**



— BEATS THE HECK OUT OF A MAGMOUNT, AND IT ALSO HAS ANOTHER USE!

CELEBRATE PAARA'S SIXTIETH - "60 for 60"

GET ON THE AIR

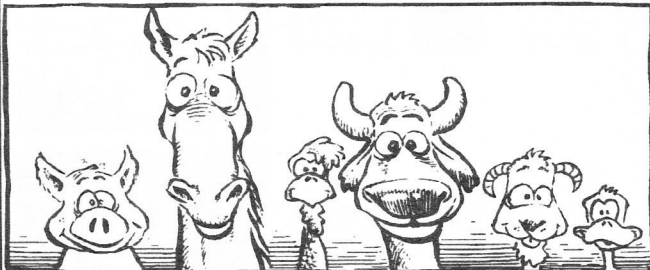
have at least 60 QSO's between July 1 and Dec 31, 1997

Any band-Any mode-Simplex only no repeater contacts

Submit log showing date, time and other station's call
Specially designed certificates will be awarded in early 1998

No confirming QSL's required!!

Join us for pre-meeting eyeball



gab & gobble

6 pm— at Su Hong Restaurant
1039 El Camino Real, Menlo Park

—across from Kepler's Book Store—

LYNN JOHNSON CONSULTING

I want to buy Excess Electronics

Connectors, ICs, Semiconductors, Components,
PC hardware & accessories, Late Model Test
Equipment, OEM Excess Electronic Materials.

PO BOX 21409
San Jose Ca 95151-1409

408-274-3559 VOC-FAX
Email, lynthec@ccnet.com

PAARAgaphs Ad Rates

PAARAgaphs accepts paid advertisements from non-members.
(short personal ads remain free for members in good standing).

All ad rates listed are per issue only.

1. Not for profit ads by association members for ham-related items and wants. No cost for business card size ads (additional space at \$2.50 per business card size).

2. For Profit organizations and/or individuals: \$5-business card size, \$25-half page, \$50 full page or back cover.

These fees may be reduced or waived in exchange for a valuable consideration that is given to the Association or its general membership. Such consideration must be in addition to any existing arrangements with the association.

The PAARAgaphs editors reserve the right to reject any ad deemed to be not in the best interest of the Association. All fees are for "scanner-ready" copy or text-only ads.

MOTHER LODE DX/CONTEST CLUB

P. O. Box 1073, Palo Alto, CA 94304-1073

June 17, 1997

Palo Alto Amateur Radio Assoc., Inc.
P. O. Box 911
Menlo Park, CA 94026

Dear Members,

On behalf of the members of the Mother Lode DX/Contest Club, I would like to thank you for the plaque you donated to the NCCC for the Top California Club entry in the 1996 CQP contest.

On May 17 Andy, AE6Y and Jim, WA6SDM came to our club meeting and presented the plaque to me and Linda Harper, AC6DQ, Past President.

The Mother Lode DX/Contest Club's first official meeting was held in January 1996 and CQP was our first club effort. We are very proud of our good showing in that contest. We currently have 29 members and are looking for more.

Thanks again for the beautiful plaque.

Sincerely,

Dick Zattermeister, N6TNX
President

HALTEK
ELECTRONICS

Chris Chalfant
Manager

1062 Linda Vista Avenue • Mountain View, CA 94043
Telephone (415) 969-0510 • (408) 744-1333 • FAX (415) 964-6973



Lud Indihar
Store Manager
Excess Solutions
430 E. Brokaw Rd
San Jose, CA 95112
408 / 573-7045
408 / 573-7046 Fax

We Buy & Sell EXCESS Inventory
New Location!

PAARA-Palo Alto Amateur Radio Association-P.O. Box 911, Menlo Park, California 94026-0911

Club meetings are on the first Friday of each month, 7:30pm at the Menlo Park Recreation Center, 700 Alma Street, Menlo Park, CA. • Radio NET every Monday evening, at 8:30pm, on the 145.230-600 MHz repeater, PL tone off. • Membership in PAARA is \$12.00 per calendar year which includes a subscription to PAARAgaphs. • Make payment to the Palo Alto Amateur Radio Association.

