

# PAARAgraphs

Since 1937

Monthly Newsletter for the Palo Alto Amateur Radio Association, Inc.



## Calendar

September 2, **Labor Day**

September 6, **PAARA Meeting, 7:30**  
Menlo Park Recreation Center  
700 Alma Street, Menlo Park 7:30-9:30 PM

September 11, **PAARA Board Meeting, 7:30**  
Red Cross Blvd. 400 Mitchell Ln., Palo Alto

October 4, **PAARA Meeting, 7:30**  
October 9, **PAARA Board Meeting, 7:30**

October 12, **PAARA AUCTION** (*tentative*)

October 26-27, **PAARA intensive class**  
for no code Amateur Radio License

November 1, **PAARA Meeting, 7:30**  
November 6, **PAARA Board Meeting, 7:30**

## DX advantage

by Don Pearson, W8IDM

I remember the late **Orrie Baumgardner, W8BF**, for the story he told me a few years ago about his six-element twenty-meter beam.

It seems one of Orrie's DX competitors wanted to know why DX stations in Asia always seemed to give Orrie a better signal report, despite Orrie's poorer DX location. When he paid Orrie a surprise visit one summer evening, he found freshly spread horse manure in the back yard. And he noticed that the beam, pointed at Asia, also pointed right over that part of the yard.

Face straight, Orrie told him he had been experimenting with ways to improve ground conductivity, and that the manure had improved his signal reports from Asia.

This apparently impressed the visitor. Although his lawn was in excellent condition, he called a landscaper the next day to order horse manure.

From the Feb.-Mar. '96 West Park Radiops

"W8VM Log" AF8C, Editor

ARNS



## Program

Sept 6, 1996 7:30 P.M.

Speaker: Tom Scherf, K6JBR

'96 PAARA Field Day, 45 min video

PAARA Radio NET every Monday evening, at 8:30pm,  
on the 145.230-600 repeater MHz, PL tone off. •

Join Us At The Next  
**PAARA Meeting**  
September 6, 7:30



Silent Key

**PERRY YELTON,**  
**WR6E**

## Miscellaneous Dates

### Flea Market at Foothill (6AM - 2PM)

- Mar 9...Palo Alto Chapter, American Red Cross
- Apr 13...Palo Alto Amateur Radio Association (PAARA)
- May 11...Perham Foundation
- June 8...Santa Clara County Amateur Radio Association (SCCARA)
- July 13...South Peninsula Emergency Communication System (SPECS)
- Aug 10...Electronics Museum Amateur Radio Club (EMARC)
- Sept 14...West Valley Amateur Radio Association (WVARA)

**PAARA** Palo Alto Amateur Radio Association  
meets 1st Friday 7:30 each month, Net 145.230 each Monday 8:30,  
contact Jerry Tucker WA6LNV 415-961-3266.

### PAARA Auction, 2<sup>nd</sup> Saturday of October

**EMARC** Electronics Museum Amateur Radio Club  
Meets 4th Friday 7:30 each month,  
contact Sheldon Edelman 415-858-2176.

**NCDXC** Northern California DX Club  
Meets 2nd Friday each month, repeater for member info 147.360, each  
Thursday 8:00PM, contact John Troster W6ISQ 415-854-3939.

**NorCalQRP** Northern California QRP Club  
Meets 1st Sunday each month, contact Jim Cates 3241 Eastwood Rd.,  
Sacramento, CA 95821.

**Perham Foundation**, contact Sy Stein WA6ROM 408-734-4453

**SPECS** Southern Peninsula Emergency Communication System  
Meets each Monday 8:00PM on Net 145.27, 224.36, 440.80 MHz  
contact Mike Hastings KB6LCJ, 408-243-6745 or 408-249-6909.

**SCARES** South County Amateur Radio Emergency Service  
Meets 3rd Thursday 7:30 each month, San Carlos City Hall.  
Net is on 144.45 & 444.50 (PL-100) 7:30 Monday evenings.  
contact Dick Collins K6ANN 415-593-8952

**Disaster Services**, Palo Alto Chapter, American Red Cross  
Meets 3rd Wed. each month 7:30PM, HF, packet, BBS, ATV,  
OSCAR Gateway, NASA satellite,  
contact Ruth Claypool 415-688-0423.

**PACIFICON'96**, October 18-20, Concord Hilton Hotel, Concord.

**VE Exams**, 3rd Saturday each month, 11AM  
American Legion Hall, 651 El Camino Real, R.C.

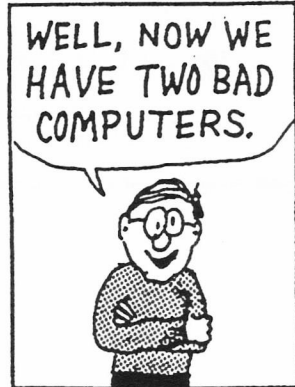
## The Board Minutes

(Aug 7, Board Meeting)

Present: **Bill Rausch, AA6PA\***, Pres.  
**Dave Bailey, WS6W**, Treas.      **Vic Black, AB6SO**, VP  
**Fred Canham, K6YT\***              **Steve Stuntz, K6FS\***  
   **Wally Porter, K6URO**  
   *\*Board member*

**Minutes:** (of previous meeting) approved  
**Treasurer Report:** see page 71

**ELMER**



ARNs

### Old Business:

1. License Class location will be at Mitchell Park, PA, Oct. 26 & 27, Announcement will be in Palo Alto Rec. Dept. publication, early September
2. Membership application form discussed
3. Auction discussed -still no location (**HELP, WS6W**)
4. Review of 1995 expenses & income, **Dave, WS6W**, Treas. .

### New Business:

1. Letter of resignation from **Lily Anne Hillis, N6PGM** presented. She resigned from Board due to conflict of meeting schedule. Discussion.
2. Dues discussed. After reviewing '95 activities an increase to \$24/yr will be proposed to the club at the next meeting (Sept.)

Meeting adjourned, 8:47pm.

**Palo Alto Amateur Radio Association, Inc.**  
**PO Box 911**  
**Menlo Park, CA 94026**

President.....Bill Rausch, AA6PA.....(408) 637-0622  
VP/ Program Director...Vic Black, Jr., AB6SO.....(415) 366-0636  
Secretary.....To Be Filled  
Corporate Secretary.....Kit Kohlmoos, W6ISO.....(415) 366 7813  
Treasurer.....Dave Bailey, WS6W .....(408) 730-5215  
Trustee/Property/Badges..Fred Canham, K6YT .....(415) 948-9238  
ARES Officer.....Lily Anne Hillis, N6PGM...(415) 325-5484  
Club Historian.....Steve Stuntz, K6FS.....(415) 322-4952

**Board of Directors**

John Buonocore, KD6ZL (415) 366 1658 '97  
Fred Canham, K6YT (415) 948 9238 '97  
Lily Anne Hillis, N6PGM (415) 325 5484 '96  
Kit Kohlmoos, W6ISO (415) 366 7813 '96  
Bill Smith, KE6CHQ (415) 366 9173 '96  
Rich Stiebel, W6APZ (415) 494 0128 '96  
Steve Stuntz, K6FS (415) 322 4952 '97  
(see "Calendar" for Board meeting times, visitors welcome)

**PAARAgaphs Staff**

Editor.....Wally Porter, .....K6URO.....(415) 494 7038  
Database.....Bill McElhinney, .....KA6LZI..... (415) 325 9808  
e-mail Address: [wmpor@comcast.net](mailto:wmpor@comcast.net)

**Submit material for PAARAgaphs by the 15th**

Join Us At The Next  
**PAARA Meeting**  
September 6, 7:30

By Rich Regent, K9GDF

**PROGRAM NOTES:**



**PAARA Meeting,  
August 2, 1996**

*Thanks to Steve Stuntz, K6FS*

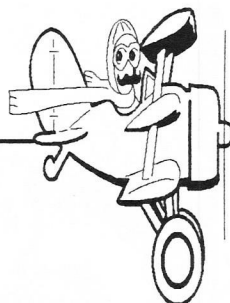
DOUBLE DELIGHT! Friday, August 2<sup>nd</sup>, inaugurated PAARA's (finally) latest acquisition: 20-inch TV receiver/monitor and VCR. Now we can really see those videos vital to our programs, thanks to some diligent comparison shopping by **Fred Canham, K6YT**, at the behest of your Board.

Our President, **Bill Rausch, AA6PA**, initiated the new gear as part of his presentation on present and upcoming NASA satellite operations showing two excellent promotional documentaries borrowed from JPL. Central topic was NASA's preparation of a brand new satellite to explore the atmosphere of Mars, via a one-year (two Martian years!) sequence of polar orbits around that planet. The spacecraft is to be launched in November, and will take about nine months to make the trip; after completing its polar-orbital mission, it will ascend to a higher orbit, where it will relay data from specially-launched probes and weather-balloon-like vehicles sampling Mar's atmosphere and surface. Data will be forwarded by the spacecraft to Earth via X-band (8 GHz) transponder.

One anticipated outcome of this latest space exploration will be a better understanding of how Mars' "weather" affects Earth's atmosphere and ionosphere. [Note: San Francisco Chronicle of Wed., 8/7/96, reported discovery of probable one-celled living organism on Mars many, many years ago!]

Bill reported on a NASA-JPL conference he attended in early June, at which the project was discussed in

**Join Us At The Next  
PAARA Meeting  
September 6, 7:30**



detail. Of particular interest to hams is NADSA-JPL's appeal for help gathering data on the spacecraft's transponder antenna field-pattern as it rotates following turn-on when the bird reaches a point about 5%(500 km) of its total trip. The transponder will transmit a CW beacon signal for one day, while the spacecraft rotates at a rate once in a hundred minutes. Transmission will be on 437.1 MHz, in the 7-cm ham band. [Don't worry

about QRM - the signals will be down in the millimicrovolt range!]

Interesting side-note: the SRI-Stanford "big dish", rebuilt and reconditioned, will monitor and command the flight of this latest Mars exploration, on the uplink frequencies around 402 MHz. Signals will take 1/2 hour to reach Earth from the spacecraft once it has achieved Martian orbit; commands from the dish will of course take the same time.

Bill concluded by showing and describing a 2-meter horizontal turnstile antenna with ground-plane (all home-brewed from available materials), designed for uplinking to the Russian RS-10 satellite (downlink = upper end of 10-meter band), CW or SSB.

Bright spot of the nontechnical part of the meeting was appearance of **Terry Conboy, N6RY**, an old PAARA hand, recently relocated to Walnut Creek after years and years in Oregon and Washington. Glad you're back home, Terry, and hope to see you at meetings from now on!

**TREASURER REPORT**

**Dave Bailey, WS6W**

Revenues '96	MAY	JUN	JUL	1996 Total
Dues	6	6	30	552
Flea Market	80	0	0	6116.28
AMPEX Auction	0	0	0	0
Advertisements	0	0	0	600
Holiday Dinner	0	0	0	0
<b>Total Revenues</b>	<b>86</b>	<b>6</b>	<b>30</b>	<b>7268.28</b>
Expenditures '96				
Stamps/Envelopes	0	0	0	32
DMV	0	0	0	43
State of CA	0	0	0	10
City of Menlo Park	0	0	0	150
Speaker's Dinner	13	13	10	91
Flea Market	0	800	0	1737.24
AMPEX Auction	0	0	0	0
Meeting Refreshments	14.55	19.59	4.74	81.95
PAARAgaphs	223.19	220.40	160.37	1400.89
Picnic	0	86.63	0	86.63
Field Day	0	32.41	43.98	76.39
Holiday Dinner	0	0	0	0
Misc.	0	0	247.81	313.81
<b>Total Expenditures</b>	<b>250.74</b>	<b>1172.03</b>	<b>466.9</b>	<b>4022.91</b>

**PAARAgaphs Ad Rates**

PAARAgaphs accepts paid advertisements from non-members. (short personal ads remain free for members in good standing).

All ad rates listed are per issue only.

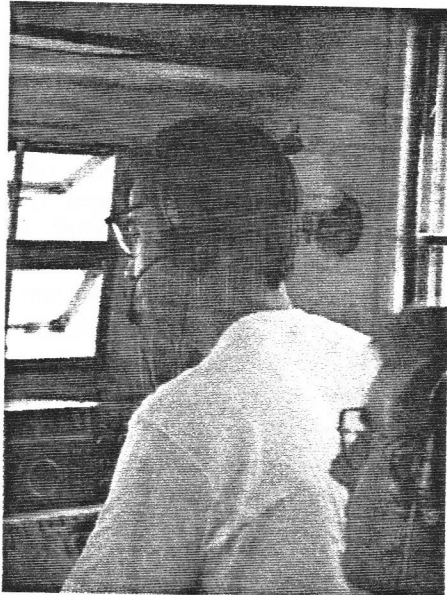
1. Not for profit ads by association members for ham-related items and wants. No cost for business card size ads (additional space at \$2.50 per business card size).
2. For Profit organizations and/or individuals: \$5-business card size, \$25-half page, \$50 full page or back cover.

These fees may be reduced or waived in exchange for a valuable consideration that is given to the Association or its general membership. Such consideration must be in addition to any existing arrangements with the association.

The PAARAgaphs editors reserve the right to reject any ad deemed to be not in the best interest of the Association. All fees are for "scanner-ready" copy or text-only ads.

# WRTC July 13, 1996

see August PAARAgaphs for full results



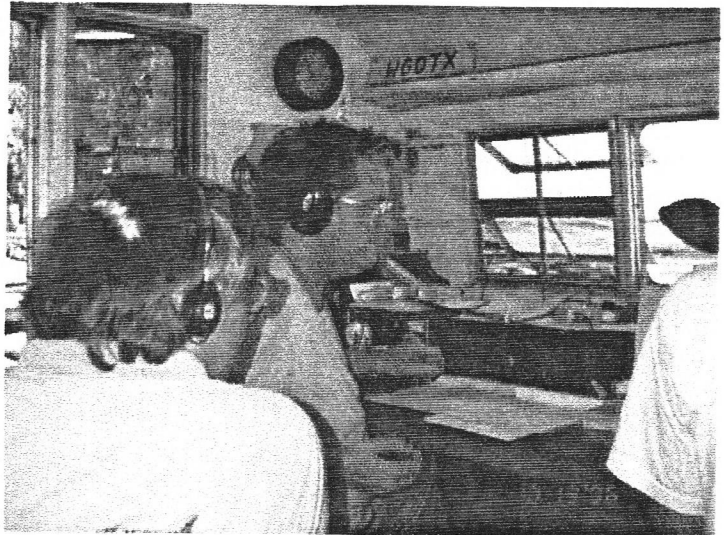
## W6D

K6YT Host  
PAARA

Tom  
K1KI ⇒

← Phil,  
K3UH

Adam,  
AA7FT ⇒  
Judge



## K6L



Zygi,  
SP9IJU  
⇒

Zygi ↑  
SP9IJU

Kit ↑  
W6ISO

Bear ↑  
JA7RMJ

Wojtek SP9HWN(not shown)

Host

Judge



## W6K



← Gerry,  
FG/F6FGZ

Gerry ↑  
FG/F6FGZ

Lee ↑  
F5MUX

Ron, ↑  
W6VG  
Host

Tom, ↑  
K5RC  
Judge



**W6Z**

↑↑  
David Tilly,  
VK2AYD  
CW ↓

↑↑  
Fred Streib  
W6NA  
Host

↑↑  
Martin Luther  
VK5GN  
SSB

↑↑  
Alexander Ivliev  
RU1AA  
Judge



David, VK2AYD operating at Fred, W6NA's location. `Where's the KEY???

## DIGITAL MODES

by Lee Jason, KF1G

Old microphone, your appeal  
was that your QSOs were ideal.  
And Vibroplex, I've loved the way  
you stood beside me, day by day;  
you never refused to work for me,  
no matter where my contact be.  
So I shall not forget you, friends;  
I'll dust you off on weekends,  
and if the mood should ever break,  
we'll modulate for old times' sake.  
But me fickle, if you wish;  
I have found a newer niche.  
Though on the keyboard just a week,  
already I'm a digital freak!

*From the February Delaware-Lehigh ARC*

*"W3OK Corral"—Clarence Snyder, W3PYF, Editor*

ARNS



YOU'LL BE GLAD TO KNOW YOUR TOWER NOW  
CONFORMS TO THE COMMUNITY'S MAXIMUM  
HEIGHT LIMITS --- WHAT IS IT YOU HAMS SAY,  
"HAPPY DX-ING?"

World Radio

### Help Needed

Dear Sir/Madam:

I am almost age 81 and blind. I have a current valid FCC ham license and want to get back on the air but need some technical assistance with my outdoor 27-foot antenna, for which help I will pay. Please contact me at (unlisted#)

(call me for #, Wally, K6URO)

Yours truly,

Barton C. Cooper  
2252 Cobblehill Place  
San Mateo, CA 94402

Join Us At The Next  
**PAARA Meeting**

### C N L SYSTEMS

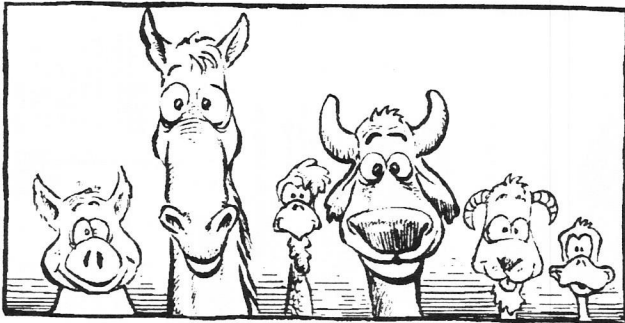
LARRY E. BOLSTER  
MARIE J. BOLSTER  
Trading Test Instrumentation  
Collins Radios & Accessories

3751 MIDDLEFIELD RD. • PALO ALTO, CA 94303  
415-494-1238

<sup>1</sup>PAARA-Palo Alto Amateur Radio Association-P.O. Box 911, Menlo Park, California 94026-0911

Club meetings are on the first Friday of each month, 7:30pm at the Menlo Park Recreation Center, 700 Alma Street, Menlo Park, CA. • Radio NET every Monday evening, at 8:30pm, on the 145.230-600 repeater MHz, PL tone off. • Membership in PAARA is \$6.00 per calendar year which includes a subscription to PAARAgaphs. • Make payment to the Palo Alto Amateur Radio Association. Permission is hereby granted to reprint from this publication with appropriate source credit.

Join us for pre-meeting eyeball QSO



**PAARA PRIDE**

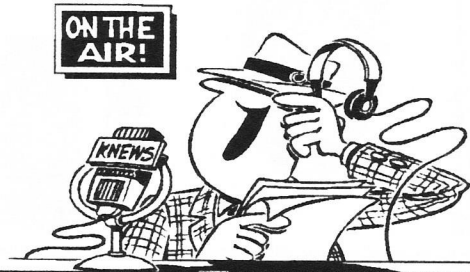
wear your  
**PAARA Badge**

to  
meetings, picnics, field days, winter parties, ham fests, flea markets,  
Pacificons... (if you need one, contact Fred, K6YT)

**gab & gobble**

6 pm— at Su Hong Restaurant  
1039 El Camino Real, Menlo Park

—across from Kepler's Book Store—



**Pacificon '96 October 18, 19, and 20**

Pacificon Hotline: (510) 932-6125

e-mail: [PACIFICON@designlink.com](mailto:PACIFICON@designlink.com)

**PACIFICON '96 - REGISTRATION**

NAMES \_\_\_\_\_ CALL \_\_\_\_\_  
 \_\_\_\_\_ CALL \_\_\_\_\_  
 ADDRESS \_\_\_\_\_  
 CITY \_\_\_\_\_ STATE \_\_\_\_\_ ZIP \_\_\_\_\_

QTY	ITEM	AMOUNT
_____	Advanced General Admission @\$3.00	\$ _____
_____	Antenna Seminar @\$7.00	\$ _____
_____	Banquet @32.00	\$ _____
_____	Beef _____ Chicken _____ Vegetarian _____	
_____	Bus Tour @\$20.00	\$ _____

TOTAL \$ \_\_\_\_\_

**PLEASE MAKE CHECKS PAYABLE TO "PACIFICON '96"**  
 Include a SASE to Return Tickets by Mail

Send to: Pacificon '96  
 P.O. Box 272613  
 Concord, CA 94527-2613

# SEPTEMBER

Palo Alto Amateur Radio Association, Inc.  
 PAARagraphs Newsletter  
 P.O. Box 911  
 Menlo Park, California 94026

FIRST CLASS MAIL



Andy Korsak Ve3fzk 96  
 504 Lakemead Way  
 Redwood City, CA 94062-3919

12 Store Buying Power!



Look for the  
 Ham Radio logo  
 on all World Wide Web  
 sites.  
<http://www.hamradio.com>

**ANNARBOR, CA 92061**  
 833 N. Euclid St.  
 (714) 833-7373  
**(800) 854-6046**  
 Janet WATYMB, Mgr.  
 Near Disneyland

**BIRMINGHAM, CA 91586**  
 10000 W. 15th St.  
 (618) 842-1786  
**(800) 854-6046**  
 Eric KAGHT, Mgr.  
 Victory Blvd. at Buena Vista  
 1 mi. east of 15

**CLARK COUNTY, CA 94686**  
 2210 Mendocino St.  
 (510) 534-5757  
**(800) 854-6046**  
 Mark KEEGFF, Mgr.

**SAN DIEGO, CA 92123**  
 1515 La Jolla Village Rd.  
 (619) 550-4900  
**(800) 854-6046**  
 Tom AMEK, Mgr.

**SUNNYVALE, CA 94086**  
 510 Lawrence Expwy #102  
 (408) 736-9496  
**(800) 854-6046**  
 Ken KLZKA, Mgr.  
 KQMH@HAMRADIO.COM  
 Lawrence Expwy  
 So. from Hwy 101

**NEW CASTLE, DE 19720**  
 10000 W. 15th St.  
 (302) 322-7092  
**(800) 854-6046**  
 Bob WNSK, Mgr.

**PORTLAND, OR 97223**  
 1705 S.W. Pacific Hwy.  
 RT 13, 1/4 mi. So. I-295  
**(800) 854-6046**  
 Earl KETGA, Mgr.  
 Tigard-99W exit  
 from Hwy 5 & 217

**DENVER, CO 80231**  
 1939 W. Dunlap Ave.  
 (303) 745-7275  
**(800) 444-9476**  
 Gary WBSLY, Mgr.  
 1 mi. east of I-71

**PHOENIX, AZ 85021**  
 1939 W. Dunlap Ave.  
 (602) 242-3515  
**(800) 444-9476**  
 Gary WBSLY, Mgr.  
 1 mi. east of I-71

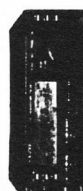
**ATLANTA, GA 30340**  
 6071 Buford Highway  
 (770) 263-0700  
**(800) 444-9476**  
 Gary WBSLY, Mgr.  
 Dunwoody, GA  
 Dunwoody, 1 mi. N. of I-285

**WOODBRIDGE, VA 22191**  
 Washington D.C. area  
 14803 Bland America Dr.  
 (703) 643-1063  
**(800) 444-9476**  
 Ron KAGOR, Mgr.  
 Exit 161, I-96, So. to US 1

**SALEM, NH 03079**  
 Boston, MA area  
 224 N. Broadway  
 (603) 893-7275  
**(800) 444-9476**  
 Chuck KMANZ, Mgr.  
 CLWB@HAMRADIO.COM  
 Exit 1, I-93  
 28 mi. N. of Boston

**AZ, CA, CO, GA, VA**  
 residents add sales tax.  
 Residents of other states  
 may be subject to  
 discounts, subject  
 to change without notice.

## KENWOOD



**TS-50S/TS-60S** HF Transceiver/DM  
 • TS-50S: 100W, 15-Meter HF Transceiver  
 • 100W CW, 150W TS-60S: 50MHz, 50MHz, 50MHz  
 • 55W CW AM FM  
 • 12V Gen. Cov. RX, 6.4 lbs., 7.16 x 2.4 x 9.32"  
 • 105db dynamic range, 100 Memos.  
 • CRT ext. ant. Tuners available (TS-50S only)  
**Call Now For Our Low Pricing!**



**TH-79A(D)** 2M/440MHz  
 • 2.7W 2M, 2W 440  
 • 5W Optional  
 • CTCSS Built-in  
 • 100 Memos  
 • DTMF Memos  
 • User-Friendly Menu Sys.  
**CALL NOW FOR INTRO SPECIAL!**



**TH-22AT**  
 • Ultra Compact  
 • 100 Memos  
 • 40 Memos  
 • Erasecode Built-in  
**CALL NOW!**

COME VISIT  
 THE STORE  
 NEAREST YOU:

SUNNYVALE, CA 94086  
 510 Lawrence Expwy. #102  
 (408) 736-9496  
 (800) 854-6046

## ICOM



**IC-706** HF/VHF Transceiver  
 • 100W HF  
 • 100W 6 Meters  
 • 10W 2 Meters  
**Call For Introductory Pricing!**



**IC-775/DSP** HF Transceiver  
 • 200W HF Transceiver • 101 memories  
 • DSP built-in • Digital noise reduction  
 • 100 Memos • 40 Memos • 100 Memos  
 • 100 Memos • 40 Memos • 100 Memos  
 • 100 Memos • 40 Memos • 100 Memos  
**Call Now For The Ultimate Radio!**

## ALINCO



**DJ-G5T** 2M/440  
 • 200 Memos, Corable  
 • Auto-Store (or UID)  
 • Built-in CTCSS  
 • Auto-Dialer memories  
 • Channel Scope  
 • 4 Sw. w/optional battery  
**CALL NOW FOR LOW INTRO PRICE!**



**DX-70T** HF Transceiver  
 100W 160-10 Mtrs • 10W 6M Genov. Rx  
 Full QSK, 100 Memos • Compact Removable  
 Dual VFO, 12/DC-6 E. lbs.

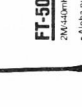
## YAESU



**FT-51R**  
 2M/440MHz HT  
 • 2W standard  
 • 5W Optional  
 • 20 Memos  
 • 10 Memos  
 • Coded SQL built-in  
**Special Low Introductory Pricing!**



**FT-50R**  
 2M/440MHz Compact HT  
 • Alpha numeric display  
 • Wide Band receive  
 • Battery Saver  
 • 10 Memos  
 • 10 Memos  
**Call For Introductory Pricing!**



**FT-1000MP** HF Transceiver  
 • Enhanced Digital Signal Processing  
 • Dual RX SSB filter built-in  
 • 100W Power supply built-in  
**Call Now For Low Intro. Pricing!**

**COAST TO COAST FREE SHIPPING**  
 UPS - Most Items Over \$100

**Rapid Deliveries From The Store Nearest To You!**



1995