

PAARAgraphs

Since 1937

Monthly Newsletter for the Palo Alto Amateur Radio Association, Inc.



Calendar

September 8, 1995 PAARA Meeting

Menlo Park Recreation Center
700 Alma Street, Menlo Park 7:30-9:30 PM

Sept. 20, 1995 PAARA Board Meeting

Red Cross Bld. 400 Mitchell Ln., Palo Alto, 7:30 P.M.

October 6, 1995 PAARA Meeting

October 7, 1995 PAARA Auction

October 18, 1995 PAARA Board Meeting

October 20, 21, & 23 1995 Pacificon '95

Concord, CA contact-Richard Schulze, AA6DL
(510) 932-6125 (hotline)

November 3, 1995 PAARA Meeting, 7:30

Nov. 15, 1995 PAARA Board Meeting

December 1, 1995 PAARA Meeting, 7:30

December No PAARA Board Meeting

December 6, 1995 PAARA Holiday Banquet

January 5, 1995 PAARA Meeting, 7:30



Program

October 6, 1995

**Speaker: Bill Rausch, AA6PA "3rd
Satellite Program"**

**IT'S
ALL
YOURS!**



DX

Dx, ie: foreign countries, still remain available during the day on 20 meters, fone and CW. 10 meters has been open, but as far as I know, only to **South America**. The bands are not dead,

contrary to the belief that now is the bottom of the 11 year cycle. Good phone contacts are numerous, as are CW. 40 is also open during the nights and early morning. Today for example, **3W5FM** in **Vietnam** is on 7005, **4F2IR** on 7007, **BV7FF** on 7008, and 2 **South African** stations on 14 Mhz.

Japan is very easy to contact on 40 in the early morning hours or around 4 PM our time. Working **Japan** on fone is a little tricky, as you must work split frequencies. The modern transceivers do have this capability. Working on split frequencies is also necessary in order to contact the DXpeditions. Usually going up in frequency 5 to 10 Khz is the norm. October starts the DX contests, fone & CW. It is easy to work many new countries during the contests, and once you try a contest you will find it a lot of fun and a real challenge.

Ron, W6VG

**PAARA
AUCTION**

Will Be

October 7



Miscellaneous Dates

Flea Market at Foothill (6AM - 2PM)
September 9..... American Red Cross (PA Chapter)

PAARA Palo Alto Amateur Radio Association
meets 1st Friday 7:30 each month, Net 145.230 each Monday
8:30, contact Jerry Tucker WA6LNV 415-961-3266.

EMARC Electronics Museum Amateur Radio Club
Meets 4th Friday 7:30 each month,
contact Sheldon Edelman 415-858-2176.

NCDXC Northern California DX Club
Meets 2nd Friday each month, repeater for member info 147.360
each Thursday 8:00PM, contact John Troster W6ISQ 415-854-3939.

NorCalQRP Northern California QRP Club
Meets 1st Sunday each month, contact Jim Cates 3241 Eastwood Rd.,
Sacramento, CA 95821.

Perham Foundation, contact Sy Stein WA6ROM 408-734-4453

SCARES South County Amateur Radio Emergency Service
Meets 3rd Thursday 7:30 each month, San Carlos City Hall.
Net is on 144.45 & 444.50 (PL-100) 7:30 Monday evenings.
contact Dick Collins K6ANN 415-593-8952

SPECS Southern Peninsula Emergency Communication System
Meets each Monday 8:00PM on Net 145.27, 224.36, 440.80 Mhz+
contact Mike Hastings KB6LCJ, 408-243-6745 or 408-249-6909.

Disaster Services, Palo Alto Chapter, American Red Cross
Meets 3rd Wed. each month 7:30PM, HF, packet, BBS, ATV,
OSCAR Gateway, NASA satellite,
contact Ruth Claypool 415-688-0423.

VE Exams Ampex Cafeteria, 3rd Saturday each month, 11AM

"HAMCON '95" ARRL SOUTHWESTERN DIVISION
Convention, September 1-3,
Long Beach, CA, contact Nate Brightman (310) 427-5123

JOTA Jamboree On The Air, World wide Amateur Radio and
Scouting event, 3rd weekend of October (Oct 21).

TREASURER REPORT

Dave Bailey, WS6W

Revenues	APR 95	MAY 95	JUN 95	JUL 95	TOTAL 1995
Dues	354	72.00	18.00	42.00	666.00
Flea Market	0	100.00	0	129.38	1931.38
AMPEX Auction	0	0	0	0	0
Advertisements				650.00	650.00
Total	354	172.00	18.00	821.38	3247.38
Expenditures					
Stamps/Envelopes	0	0	64.00	0	96.00
DMV	0	0	0	0	43.00
State of CA	0	0	0	0	5.00
City of Menlo Park	0	0	0	0	150
Speaker's Dinner	12.00	13.00	0	7.03	42.03
Flea Market	379.47	0	0	0	1168.69
AMPEX Auction	0	0	0	0	0
Meeting Refresh	13.79				44.59
PAARAgaphs	179.78	16.99	64.63	324.53	793.46
Picnic	0	0	398.15	0	
Field Day			416.41	416.41	
Misc.	0	19.97	0	14.00	119.03
Total	585.04	49.96	943.19	761.97	2461.80

Checking \$ 4,626.57
Savings \$ 17,489.42

PAARAgaphs Ad Rates

PAARAgaphs accepts paid advertisements from non-members (short personal ads remain free for members in good standing).
All ad rates listed are per issue only.

1. Not for profit ads by association members for ham-related items and wants. No cost for business card size ads (additional space at \$2.50 per business card size).
2. For Profit organizations and/or individuals: \$5-business card size, \$25-half page, \$50/full page or back cover

These fees may be reduced or waived in exchange for a valuable consideration that is given to the Association or its general membership. Such consideration must be in addition to any existing arrangements with the association.

The PAARAgaphs editors reserve the right to reject any ad deemed to be not in the best interest of the Association. All fees are for "scanner-ready" copy or text-only ads.

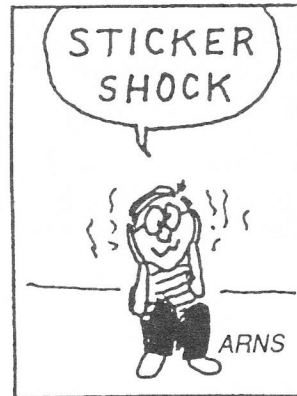
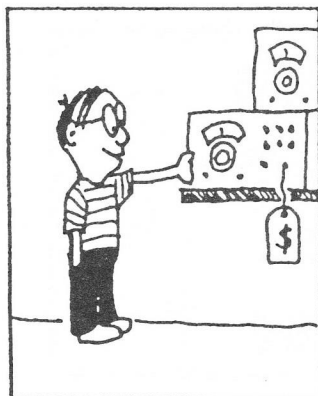
Amateur tower meets utility power; ham killed!

Another Radio Amateur has died while erecting an antenna near a power line. The Dallas Morning News reported that on March 18, Ernest Rutledge, KC5CQR, of Keller, Texas, was electrocuted while

taking a friend install an antenna. Don't take chances. Safety first!

from the May '95 Foundation for Amateur Radio "Auto-Call"—John Queen, KA0SEY, Editor

ELMER



By Rich Regent, K9GDF

BAND GUIDE from July Dxer, courtesy Hal Godfrey, N6AN, Dxer editor and PAARA member.

This is a high frequency band guide detailing the various services throughout the HF band. Listed are such things as the SW broadcast, Amateur, Marine, Aircraft, Fixed, Mobile and CB services.

SHORTWAVE FREQUENCIES BAND GUIDE

535 - 1705	LOCAL	AM Broadcast	Standard North America AM
1705 - 1800	FIXED	Fixed Service	Land/Mobile/Marine
1800 - 2000	HAM	Amateur 160 Meters	
2000 - 2107	MARINE	Maritime Mobile	
2107 - 2170	FIXED	Fixed Service	Land/Mobile/Marine
2170 - 2194	MOBILE	Land Mobile Service	
2194 - 2300	FIXED	Fixed Service	
2300 - 2495	SWBC	Shortwave Broadcast	120 Meters
2495 - 2505	TIME	Time Standard	
2505 - 2850	FIXED	Fixed Service	Land/Mobile/Marine
2850 - 3155	AIR	Aeronautical Mobile	Transoceanic Flights
3155 - 3200	FIXED	Fixed Service	
3200 - 3400	SWBC	Shortwave Broadcast	90 Meters
3400 - 3500	AIR	Aeronautical Mobile	Transoceanic Flights
3500 - 4000	HAM	Amateur 80/75 Meters	
3500 - 3750	CW	Amateur 80 Meter CW	Extra
3525 - 3750	CW	Amateur 80 Meter CW	Advanced, General
3700 - 3750	CW	Amateur 80 Meter CW	Novice, Technician
3750 - 4000	PHONE	Amateur 75 Meter PHONE	Extra
3775 - 4000	PHONE	Amateur 75 Meter PHONE	Advanced
3850 - 4000	PHONE	Amateur 75 Meter PHONE	General
3900 - 4000	SWBC	Shortwave Broadcast	75 Meters, Not in Region 2
4000 - 4000	TIME	Time Standard	New WARC Allocation Region 3
4000 - 4063	FIXED	Fixed Service	
4063 - 4438	MARINE	Maritime Mobile	Ship / Shore
4438 - 4650	FIXED	Fixed Service	
4650 - 4750	AIR	Aeronautical Mobile	Transoceanic Flights
4750 - 5060	SWBC	Shortwave Broadcast	60 Meters
5000 - 5000	TIME	Time Standard	WWV
5005 - 5450	FIXED	Fixed Service	
5450 - 5730	AIR	Aeronautical Mobile	Transoceanic Flights
5730 - 5950	FIXED	Fixed Service	
5950 - 6200	SWBC	Shortwave Broadcast	49 Meters
6200 - 6525	MARINE	Maritime Mobile	Ship / Shore
6525 - 6765	AIR	Aeronautical Mobile	Transoceanic Flights
6765 - 7000	FIXED	Fixed Service	
7000 - 7300	HAM	Amateur 40 Meters	
7000 - 7150	CW	Amateur 40 Meter CW	Extra
7025 - 7150	CW	Amateur 40 Meter CW	Advanced, General
7100 - 7150	CW	Amateur 40 Meter CW	Novice, Technician
7150 - 7300	PHONE	Amateur 40 Meter PHONE	Extra, Advanced
7225 - 7300	PHONE	Amateur 40 Meter PHONE	General
7100 - 7300	SWBC	Shortwave Broadcast	41 Meters, Not in Region 2
7300 - 8195	FIXED	Fixed Service	
7335 - 7335	TIME	Time Standard	CHU Canada
8000 - 8000	TIME	Time Standard	New WARC Allocation Region 3
8195 - 8815	MARINE	Maritime Mobile	Ship / Shore
8815 - 9040	AIR	Aeronautical Mobile	Transoceanic Flights
9040 - 9500	FIXED	Fixed Service	
9500 - 9900	SWBC	Shortwave Broadcast	31 Meters
9775 - 9995	FIXED	Fixed Service	
10000 - 10000	TIME	Time Standard	WWV
10005 - 10100	AIR	Aeronautical Mobile	Transoceanic Flights
10100 - 10150	HAM	Amateur 30 Meters	CW Only
10100 - 10150	CW	Amateur 30 Meters	Extra, Advanced, General
10100 - 11175	FIXED	Fixed Service	
11175 - 11400	AIR	Aeronautical Mobile	Transoceanic Flights
11400 - 11650	FIXED	Fixed Service	
11650 - 12050	SWBC	Shortwave Broadcast	25 Meters
12050 - 12330	FIXED	Fixed Service	
12330 - 13200	MARINE	Maritime Mobile	Ship / Shore
13200 - 13360	AIR	Aeronautical Mobile	Transoceanic Flights
13360 - 13600	FIXED	Fixed Service	
13600 - 13800	SWBC	Shortwave Broadcast	New WARC Allocation
13800 - 14000	FIXED	Fixed Service	
14000 - 14350	HAM	Amateur 20 Meters	
14000 - 14150	CW	Amateur 20 Meters	Extra
14025 - 14150	CW	Amateur 20 Meters	Advanced, General
14150 - 14350	PHONE	Amateur 20 Meters	Extra
14175 - 14350	PHONE	Amateur 20 Meters	Advanced
14225 - 14350	PHONE	Amateur 20 Meters	General
14350 - 14995	FIXED	Fixed Service	
15000 - 15000	TIME	Time Standard	WWV
15010 - 15100	AIR	Aeronautical Mobile	Transoceanic Flights
15100 - 15600	SWBC	Shortwave Broadcast	19 Meters
15600 - 16460	FIXED	Fixed Service	
16460 - 17360	MARINE	Maritime Mobile	Ship / Shore
17360 - 17550	FIXED	Fixed Service	
17550 - 17900	SWBC	Shortwave Broadcast	16 Meters
17900 - 18030	AIR	Aeronautical Mobile	Transoceanic Flights
18030 - 18780	FIXED	Fixed Service	
18780 - 18900	MARINE	Maritime Mobile	Ship / Shore
18900 - 19680	FIXED	Fixed Service	
19680 - 19800	MARINE	Maritime Mobile	Ship / Shore
19800 - 21000	FIXED	Fixed Service	
21000 - 21450	HAM	Amateur 15 Meters	
21000 - 21200	CW	Amateur 15 Meters	Extra
21025 - 21200	CW	Amateur 15 Meters	Advanced, General
21100 - 21200	CW	Amateur 15 Meters	Novice, Technician
21200 - 21450	PHONE	Amateur 15 Meters	Extra
21225 - 21450	PHONE	Amateur 15 Meters	Advanced
21300 - 21450	PHONE	Amateur 15 Meters	General
21450 - 21850	SWBC	Shortwave Broadcast	13 Meters
21850 - 22000	AIR	Aeronautical Mobile	
22000 - 22720	MARINE	Maritime Mobile	Ship / Shore
22720 - 23200	FIXED	Fixed Service	
23200 - 23350	AIR	Aeronautical Mobile	
23350 - 24990	FIXED	Fixed Service	
24890 - 24990	HAM	Amateur 12 Meters	Shared with above Fixed Sve.
24890 - 24930	CW	Amateur 12 Meter	Extra, Advanced, General
24930 - 24990	PHONE	Amateur 12 Meter	Extra, Advanced, General
25000 - 25000	TIME	Time Standard	
25010 - 25330	INDUST	Petroleum Industry	
25330 - 25600	GOVERN	Government Freq.	
25600 - 26100	SWBC	Shortwave Broadcast	11 Meters
26100 - 26480	MOBILE	Land Mobile Service	
26480 - 26950	GOVERN	Government	
26950 - 26960	FIXED	International Fixed Sve	
26960 - 27410	CB	Citizen's Band	Channels start at 26965 by 10
27410 - 27540	MOBILE	Land Mobile Service	
27540 - 28000	GOVERN	Government	
28000 - 29700	HAM	Amateur 10 Meters	
28000 - 28300	CW	Amateur 10 Meter	Extra, Advanced, Genral
28100 - 28200	CW	Amateur 10 Meter	Novice, Technician
28300 - 28500	PHONE	Amateur 10 Meter	Novice, Technician
28300 - 29700	PHONE	Amateur 10 Meter	Extra, Advanced, General
29700 - 29800	INDUST	Forestry Service	
29800 - 29890	FIXED	Fixed Service	
29890 - 29910	GOVERN	Government	
29910 - 30000	FIXED	Fixed Service	

Hal, N6AN

PAARA Field Day results: Courtesy Gerry Tucker, WA6LNV



do not write above this line

Field Day

1. Field Day Call Used W6OTX 2. Club or group name Palo Alto Amateur Radio Assn.
 3. Field Day location End of Bay Road - East Palo Alto, CA
 4. Check if you began set-up prior to 1800 UTC Saturday. 5. Number of people participating in this operation. 41 6. Number of transmitters in simultaneous operation. 2

7. ARRL/Canadian Section SCV 11.

8. Entry Class (check one only):

- A. Club or non-club group portable
 B. Non-club portable 1op _____ 2op _____
 list operators _____
 C. Mobile
 D. Home station (commercial power)
 E. Home station (emergency power)

9. Power source

- Generator Battery
 Commercial mains Other

10. Call sign of Novice/Technician station KC6SDF
 (class 2A and above)

CW			PHONE		
	QSOs	Power Output		QSOs	Power Output
160			160		
80	110	90	80	147	90
40	108	90	40	100	90
20	393	90	20	499	90
15	45	90	15	5	90
10			10		
6			6		
2			2	5	5
Other			Other	4	40
Other			Other	38	40

Nat. Power SAT. VHF

12. Total CW QSOs 682 × 2 = 1364
 Total phone QSOs 862 × 1 = 862
 Total QSO points 2226

656	CW QSOs	798	PHONE QSOs
26	Novice CW QSOs	64	Novice PHONE QSOs
682	Total CW QSOs	862	Total PHONE QSOs

13. Total QSO points 2226 × Power Multiplier (5 W or less, ×5; 150 W or less, ×2; over 150 W, ×1) 2
 equals Claimed Score (less bonus points) 4452

14. Bonus points

- Attach proof required for all bonus points claimed. All bonus points will be added at ARRL HQ.
- 100% Emergency power Message to SM Natural Power
 Media Publicity W1AW Field Day message Packet Radio
 Location in Public Place Messages handled (no.) _____ VHF/UHF
 Information Booth Satellite Other _____

15. This certifies that the station whose call appears above was operated in accordance with the current Field Day rules and that, to the best of my knowledge, the points and scores set forth in the above summary are correct and true. This station was operated in accordance with FCC rules and regulations. I agree to be bound by any decision of the ARRL Awards Committee.

Date 13 July 95 Signed Gerry H Tucker Call WA6LNV signature/call of club president
 Field Day Chairman

16. Full mailing address (please print):

Name G H Tucker
 Address 1112 Ramona St.
Palo Alto, CA 94301

Hamming it up— with a serious goal

Amateur radio operators have a field day and prepare for emergencies

by Janice Kim

"Sugar, sugar. This is whiskey . . . 2 Alpha, Santa Clara Valley," the amateur radio operator announced into his handie-talkie.

Dialogue like that could be heard for 24 hours running at the Amateur Radio Field Day Contest one day late last month. Radio operators or "hams" in the Palo Alto area were among those all over North America taking part in the event on June 24. The goal: to make the greatest number of communication contacts in the nation.

Organized by the American Radio Relay League, the local site for the contest was the Palo Alto Boat Works in East Palo Alto. Participants set up transmission stations near the water, a propitious open area to maximize the strength of the radio signals. A couple of tents, a trailer and several transmitter towers covered the dirt ground.

The local Boy Scouts, working on their radio merit badges, operated a novice station tent with a few frequencies. Palo Alto Amateur Radio Association members licensed by the Federal Communications Commission managed the satellite and Morse code stations.

As part of the event, radio operators send out a call on the shortwave band either through a "handie-talkie" transmitter by voice or by Morse code, and then wait for a response.

"It's kind of like fishing," explained Vic Black, secretary of the Palo Alto club. "You don't know what you're going to get."

Upon receiving a contact, they exchange the number of transmitters operating at one time and the name of their district. Another method of operation involves satellite stations, which relay the signal to other radio satellites circling the Earth.

Although the object of the national event is to perform higher than other divisions and provide an enjoyable social setting, amateur radio also serves a serious and significant purpose.

"We're exercising our ability to react in an emergency situation," said Black. "In the event of an earthquake, California's (standard electricity) lines are shut down, and police cars in Los Angeles cannot communicate with police here because they operate on a different frequency. Ham radio makes that possible."

The amateur radio emergency service groups most recently assisted local authorities in providing communications during the Oklahoma bombing, when communication circuits were overloaded.

Aside from emergency aid, amateur radio improves international goodwill by providing a common means of communication and a shared interest. There are about 450,000 licensed hams in the United States, with many more around the world, particularly in Japan. The activity also encourages experimentation with electronics.

And it's not only for men. "It's a fairly male-dominated hobby," said Lily Anne Hillis, first female president of the club. "I hope to have paved the way for more females by showing females they actually can do this."

Hillis took up ham radio 10 years ago with an interest in disaster preparedness and emergency situations.

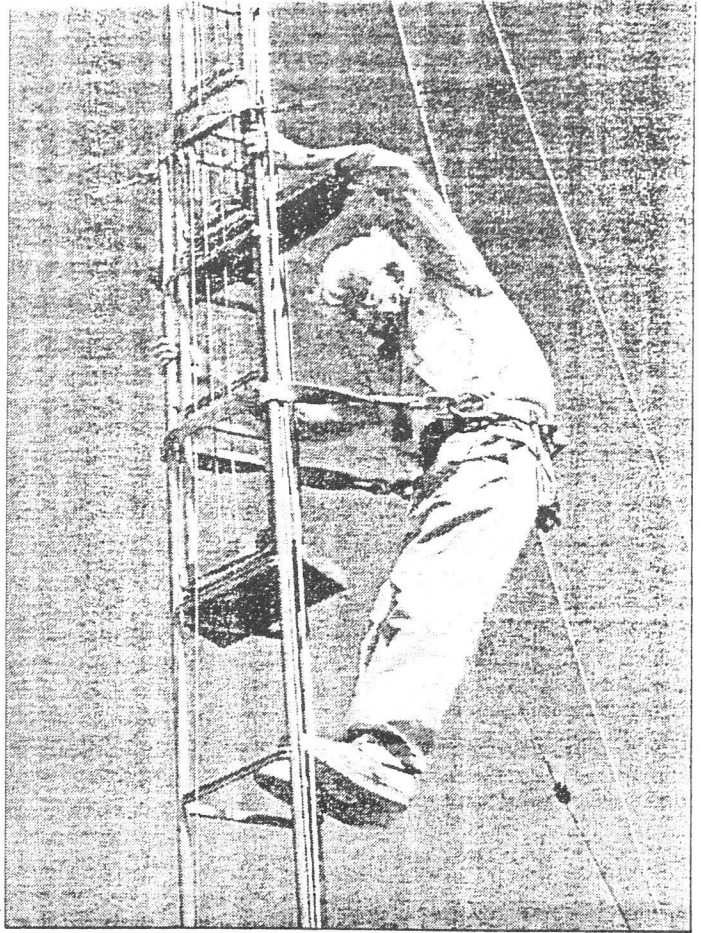
Some hams participate as a challenge to determine how many countries or how great a distance they can achieve. Others simply consider it a hobby. "It's what we call 'rag chew,'" said Black. "Some use it as a party line."

At the close of the 24-hour period, the Santa Clara Valley division had completed about 1,000 contacts by voice, 1,000 by Morse code, a couple hundred through the Boy Scout novices and four by satellite. Contacts were reached in Guatemala, Italy and Germany, in addition to those in the United States and Canada.

The Palo Alto club's ranking in the nation will not be determined until this fall after results have been compiled.

The Stanford University Amateur Radio Club also participated in the competition, with equipment set up in the hills behind the campus. The club contacted about 1,200 other stations, with more than half completed through Morse Code. Some were made through voice and digital communications, and a few through a solar-charged battery to power the radios.

The Palo Alto club holds regular meetings the first Friday of each month at 7:30 p.m. at the Menlo Park Recreation Center, 700 Alma St. Those interested in learning more about amateur radio are invited to attend. ■



Lily Anne Hillis

Fred Canham of Los Altos, a past president of the Palo Alto Amateur Radio Association, is 30 feet up in the air as he puts up a radio tower for the club's annual field day last year.

Palo Alto Weekly • Wednesday, July 12, 1995



from the March '95 Mountain ARC (Teller County, Colo.) "MARC Communicator"—George Hinds, N8CIX, Editor

The American Radio Relay League, Inc.

HEADQUARTERS, NEWINGTON, CONNECTICUT, U. S. A.

Charter of Affiliation AFFILIATED 50 YEARS

Whereas it is the desire of the American Radio Relay League to establish bonds of affiliation with non-commercial amateur radio organizations of kindred aims and purposes to make possible unity of action in matters affecting the welfare of Amateur Radio and lend mutual strength; and **Whereas**

Palo Alto Amateur Radio Association

has declared its sympathy with and allegiance to the aims and policies of the League in its efforts to strengthen and advance Amateur Radio Communication and Experimentation, and has expressed its willingness and desire to cooperate therein:

Now Therefore, under the policies of its Board of Directors, the American Radio Relay League as of this date hereby declares the said organization to be an affiliated body, and issues this charter in token thereof.

July 10, 1937
Affiliated

Gerry Williams, W14ED
Secretary

Larry E. Price
President

↑ ↑ ↑ PAARA HISTORY

We are attempting to recover PAARA history. The above is an example of early PAARA. **Gerry Tucker, WA6LNV** was club president in 1987 and has the original certificate.

Gerry Wagstaffe, W6NIR, has loaned me some copies of PAARAgaphs back to 1973. Do You have older copies I could have or borrow?

Does anyone have documents to show when the club was founded, maybe before ARRL affiliation?

Wally K6URO

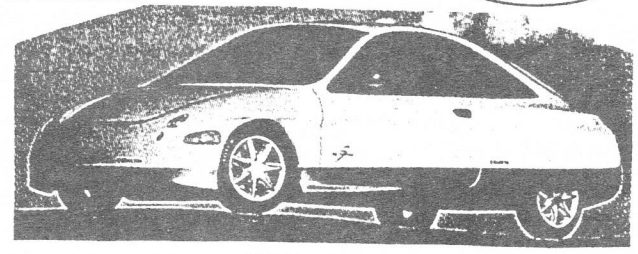
PAARA AUCTION

October 7

Ampex Cafeteria

23RD ANNUAL ELECTRIC CAR RALLY

51,547 Roadworthy
Licensed in California
Feb 28, 1995



"SUNRISE" BY SOLECTRIA

Visit the Rally--Learn the **FACTS** about electric vehicles of today and tomorrow. Talk to builders, owners, drivers and dealers.

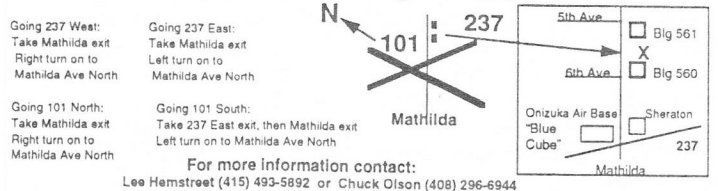
- Non-polluting
- Future Jobs
- Not Oil Dependent
- Highway Speeds

FREE RIDES! FREE ADMISSION!

SATURDAY SEPTEMBER 16, 1995

9:30 TO 4:00 P.M.

1184 North Mathilda Ave Sunnyvale, CA
Parking Lot Between Lockheed Bldg 560 and 561



Going 237 West:
Take Mathilda exit
Right turn on to
Mathilda Ave North

Going 237 East:
Take Mathilda exit
Left turn on to
Mathilda Ave North

Going 101 North:
Take Mathilda exit
Right turn on to
Mathilda Ave North

Going 101 South:
Take 237 East exit, then Mathilda exit
Left turn on to Mathilda Ave North

For more information contact:
Lee Hemstreet (415) 493-5892 or Chuck Olson (408) 296-6944



Here & There

GET SOME SMARTS

If you were ever searching for a way to get started building equipment utilizing embedded controllers (those little computers with small brains used in everything from clocks to cars), then perhaps Motorola Semiconductor has a complete solution of interest to you. Motorola has packaged in one kit a truly complete microcontroller development system. The kit includes: a complete set of manuals for the beginner and extending to the expert, all the software necessary for a development system, i.e. assembler, simulator, etc., a hardware in-circuit emulator that also performs as the microcontroller programmer. The system connects to the parallel port of a generic 286 or better PC, permitting you to emulate the operation of the microcontroller under PC control during development, bread boarding, and debugging. Finally, the kit contains an EPROM re-programmable 8-bit microcontroller chip for use in the final system.

Purchased separately, the cost of the individual system components could easily exceed \$700. Motorola offers the whole set-up in one box for \$100. The system is available from any the Motorola distributor like Hamilton, Wyle, Future, etc. I bought mine from Wyle by telephone, charging it to my credit card and having it shipped to my home. What could be easier. The kit is called the "68HC705J1A Development Kit". Wyle's phone number is 408-725-2500.

So, if you have been considering adding some "smarts" to your next project, this is possibly the best opportunity I've seen to get started. Maybe a group of three or four from the club that would like to tackle a beginning project together. I'd be happy to help.

Dick Kors, KM6EP

kors@netcom.com

e-mail?

Interest has been expressed in adding e-mail addresses to the PAARA data bank, to be printed with the next club roster. You may send your e-mail address to me and I'll pass them on to **Bill, KA6LZI**.

Wally, K6URO, wmpor@aol.com

Palo Alto Amateur Radio Association, Inc. PO Box 911 Menlo Park, CA 94026

President.....To Be Filled
VP.....To Be Filled
Secretary.....Vic Black, Jr., AB6SO (415) 366-0636
Treasurer.....Dave Bailey, WS6W (408) 730-5215
Program Director.....Vic Black, Jr., AB6SO (415) 366-0636
Trustee/Property/Badges..Fred Canham, K6YT (415) 948-8238
ARES Officer.....Lily Anne Hillis, N6PGM (415) 325-5484
Club Historian.....Steve Stuntz, K6FS (415) 322-4952
Raffle Chairperson.....Sy Stein, WA6ROM (415) 967-0362

Board of Directors

Lily Anne Hillis, N6PGM (415) 325 5484
Koert Koelman, KC6WCI (415) 593 5613
Kit Kohlmoos, W6ISO (415) 366 7813
Dave Meacham, W6EMD (415) 369 2633
Chris Rempel, N6VZD (415) 375 1958
Bill Smith, KE6CHQ (415) 366 9173
Sy Stein, WA6ROM (415) 967 0362
Rich Stiebel, W6APZ (415) 494 0128
Bill Zaner, WB6IYS (415) 856 2089

PAARAgaphs Staff

Editor.....Wally Porter, K6URO (415) 494-7038
Database.....Bill McElhinney, KA6LZI (415) 325-9808
e-mail Address: wmpor@aol.com

Submit material for PAARAgaphs by the 15th

PAARA Membership:

Dues paid.....139

Dues unpaid to date.....69

If you are not receiving PAARAgaphs check with **Dave Bailey, WS6W, PAARA Treasurer**. He will accept dues and notify **Bill McElhinney, KA6LZI**, to place you in the data base for mailing.

PAARA AUCTION

October 7

Ampex Cafeteria

⇒ San Mateo OES (under **Rick Reed, N6SHY**) is now on the WWW:

<http://www.co.sanmateo.ca.us/oeshome.htm>

Kenneth S. Dueker, KB6BPM/1
kdueker@hulaw1.harvard.edu

¹PAARA·Palo Alto Amateur Radio Association·P.O. Box 911, Menlo Park, California 94026-0911

Club meetings are on the first Friday of each month, 7:30pm at the Menlo Park Recreation Center, 700 Alma Street, Menlo Park, CA.

Radio NET every Monday evening, at 8:30pm, on the 145.230-600 repeater Mhz, PL tone off. Membership in PAARA is \$6.00 per calendar year which includes a subscription to PAARAgaphs. Make payment to the Palo Alto Amateur Radio Association.

Permission is hereby granted to reprint from this publication with appropriate source credit.

> 12 STORE BUYING POWER! <

Watch for HRD Home Page on Internet World Wide Web
[HTTP://WWW.HAMRADIO.COM](http://www.hamradio.com)



WORLDWIDE DISTRIBUTION

SUNNYVALE, CA 94086
 510 Lawrence Expwy. #102
 (408) 736-9496
 (800) 854-6046

OAKLAND, CA 94606
 2210 Livingston St.
 (510) 534-5757
 (800) 854-6046

Phone Hours:
 9:30 AM to 5:30 PM
 Store Walk-In Hours:
 10:00 AM - 5:30 PM - Closed Sundays

ENHANCE YOUR HRD Catalog!

AMARILLO, TX 79801
 533 N. Euclid St.
 (714) 330-8910
 (800) 854-6046
 John WATKINS, Mgr.
 Near Dismal

NEW ORLEANS, LA 70116
 2400 N. Tchoupchee Blvd.
 (504) 885-7212
 (800) 854-6046
 Joe KREMER, Mgr.
 Victory Blvd. at Buena Vista
 1 mi. west 1/5

DENVER, CO 80231
 8400 E. 14th Ave. #9
 (303) 745-7373
 (800) 444-9476
 Joe KUDOLA, Mgr.

PHOENIX, AZ 85015
 1702 W. Camelback Rd.
 (602) 242-3515
 (800) 444-9476
 Gary WETSLEY, Mgr.
 East of Highway 17

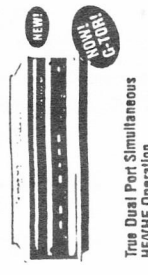
ATLANTA, GA 30340
 6071 Buford Highway
 (404) 252-0700
 (800) 444-7927
 John HARRIS, Mgr.
 Dunwoode 1 mi. SW of 285

WOODBRIDGE, VA 22191
 Washington D.C. area
 (703) 643-1063
 (800) 444-4789
 Jerry WATKINS, Mgr.
 Exit 181 I-95, So. to US 1

BOSTON, MA 02129
 224 N. Broadway
 (603) 898-3750
 (800) 444-0047
 CLIVE HARRIS, Mgr.
 CLIVEHARRIS@COM
 Exit 1 I-93
 28 mi. N. of Boston

NEW CASTLE, DE 19720
 1000 E. 1st St.
 (302) 327-7097
 (800) 644-4476
 John NIEL, Mgr.
 RT 13, 1/4 mi. So. I-295
 AZ, DC, CO, HI, IL, IN, MD, MI, MN, NY, OH, PA, VA, WI, WY
 For more information, call us today
 or check our website for
 to change without notice

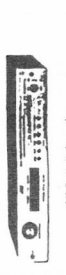
KANTRONICS
KAM PLUS.



True Dual Port Simultaneous HF/VHF Operation
 NEW KAM Plus features 128K RAM, EPROM space for 1 MB, on-board clock, expanded personal mailbox and Packet And G-TORI Operating modes include CW/RTTY/ASCII AMTOR/PACKET/CTDOR/WEFAX Terminal programs available for PC, Commodore and Macintosh computers

CALL FOR OUR SPECIAL PRICE!

MFJ MFJ-949 E MFJ-1278 BS



All 9 digital modes
 Easy Mail™ Personal Mailbox
 20 LED Precision Tuning Indicator
 Includes free power supply
One Year Unconditional Guarantee

Call now for all MFJ products...
Watimeters, dummy loads, coax switches, keys, clocks, speaker and mics, software, books and more!

KANTRONICS
KPC-3/KPC-9612



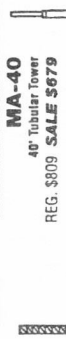
A high performance, low power TNC, for new and experienced users. Features dual level command structure, auto TNC, auto TID, auto Baud, auto baud 12K Baud, expandable to 512K. PBBS includes two way forwarding, message header editing, remote sysop access and KA-MODE.
Call For Special Low Price!

Global Time Indicator

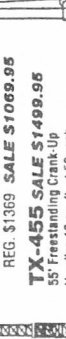


Detailed illuminated map shows time, date, day of week, month, year on the HF. Continuously moving - areas of day and night change as you watch. Mounts easily on wall. Size: 34 1/2" x 22 1/2".
 Reg \$1295. **SALE \$999.95**

MA-40
 40" Tubular Tower
 REG. \$809 **SALE \$679**



MA-550
 55" Tubular Tower
 Handles 10 sq. ft. at 50 mph
 Phases neighbors with tubular streamlined look
 REG. \$1369 **SALE \$1069.95**



TX-455 **SALE \$1499.95**
 55" Freestanding Crank-Up
 Handles 18 sq. ft. at 50 mph
 No guying required
 Extra-strength construction
 Can add raising and motor drive accessories

Towers Rated to EIA Specifications
 Other Models at Great Prices!

MFJ MFJ-949 E MFJ-1278 BS



Built-in dummy load
 New peak and Average Lighted
 2-color Cross-Needle SWR/Wattmeter
 Built-in antenna switch, balun • Covers 1.8-30 MHz
 All MFJ Packets Stocked!

Concepty
VHF/UHF
 Solid State Amplifiers



Contemporary design, quality and a 1 year warranty on parts and labor. Available on the HF. Most amplifiers have GASSET receive pre-amps and high SWR shutdown protection

KANTRONICS
KPC-3/KPC-9612



NEW KPC-9612 9600 Baud Baud
 A high performance, low power TNC, for new and experienced users. Features dual level command structure, auto TNC, auto TID, auto Baud, auto baud 12K Baud, expandable to 512K. PBBS includes two way forwarding, message header editing, remote sysop access and KA-MODE.
Call For Special Low Price!

SEPTEMBER

Palo Alto Amateur Radio Association, Inc.
 PAARAgaphs Newsletter
 P.O. Box 911
 Menlo Park, California 94026

FIRST CLASS MAIL



Andy Korsak VE3FZK
 504 Lakemead Way
 Redwood City CA 94062-3919