


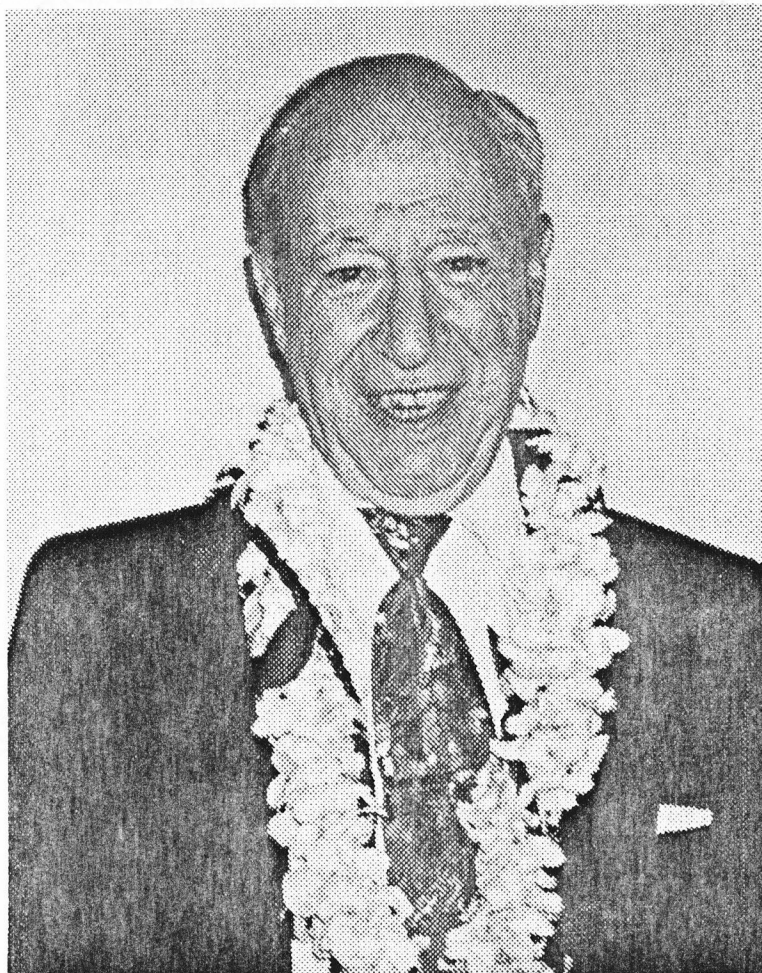
**PAARA**  
GRAPHS



PAARA PO BOX 911  
MENLO PARK CA 94026

palo alto  
AMATEUR  
RADIO ASSN.

JANUARY 1994



SY WA6ROM CELEBRATES...  
AND SO DO WE!  
(THE STORY INSIDE)

# PAARA

## NEW OFFICERS & BOARD

\*\*\*

PRESIDENT - LILY ANNE HILLIS N6PGM  
VICE PRESIDENT - ANDY KORSAK VE3FZK  
SECRETARY - JOHN GOMPERTS WB7TEM  
TREASURER - RON CARMICHAEL KD6RFI  
TRUSTEE W6OTX - FRED CANHAM K6YT  
PROPERTY/BADGES - FRED CANHAM K6YT  
ARES OFFICER - LILY ANNE HILLIS N6PGM  
CLUB HISTORIAN - STEVE STUNTZ K6FS  
BANQUET CHAIRPERSON - TO BE FILLED

### BOARD OF DIRECTORS

\*\*\*

CHUCK JOHNSON N6VFH  
DAVE MEACHAM W6EMD  
DAN CURRY WB6STW  
CHRIS REMPEL N6VZD  
KOERT KOELMAN KC6WCI  
GERRY TUCKER WA6LNV  
SY STEIN WA6ROM

### PAARAVGRAPHS STAFF

EDITOR	CHUCK JOHNSON N6VFH	408-251-8536
MAILING	BILL McELHINNEY KA6LZI	415-325-9808

### PAARA POLICIES

MEMBERSHIP IN PAARA IS \$6.00 PER CALENDAR YEAR WHICH INCLUDES A SUBSCRIPTION TO PAARAVGRAPHS. MAKE PAYMENT TO THE PALO ALTO AMATEUR RADIO ASSOCIATION, P.O. BOX 911, MENLO PARK, CA 94026  
CLUB NET 147.45 MHZ MONDAYS 8:30 PM  
MEETINGS: 7:30 PM ON THE FIRST FRIDAY OF EACH MONTH AT THE MENLO PARK RECREATION CENTER, 700 ALMA STREET.

SEND PAARAVGRAPHS CORRESPONDENCE TO:

CHUCK JOHNSON N6VFH, EDITOR  
3309 MT. LOGAN DRIVE  
SAN JOSE, CA 95127

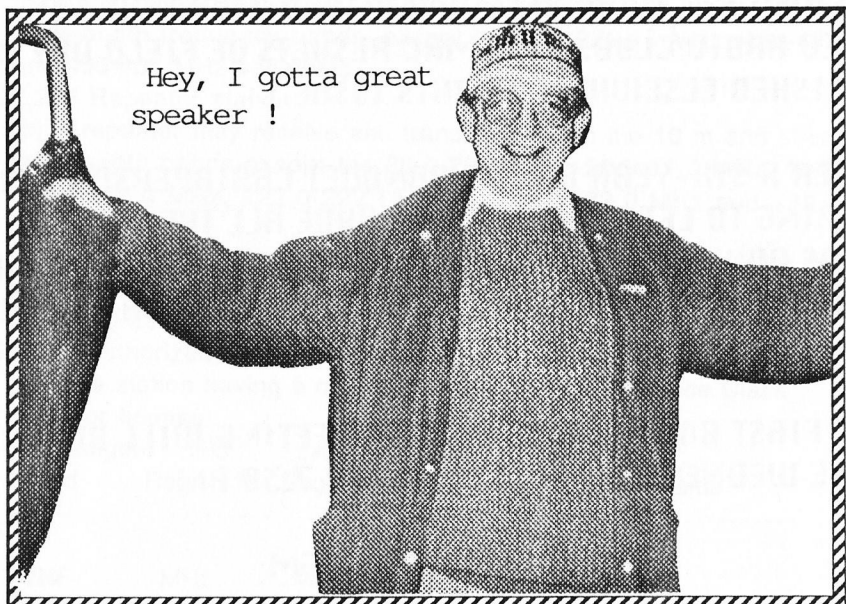
# FROM THE EDITOR'S DESK

HAPPY NEW YEAR! - DE YOUR EDITOR

## SPEAKER OF THE MONTH

N6 W(ith) B(aby) P(ins)

**JOHN LAWRIBEAU**, from SRI



John will talk about the trials & tribulations of communicating from the Greenland Ice Cap pertaining to the SRI/National Science Foundation expedition he took part in. VIDEO included pertaining to the trip. DINNER WITH SPEAKER, 6:00 PM ON MEETING FRIDAY, JANUARY 7TH. SUHONG, ELCAMINO OFFRAVENSWOOD, MENLO PARK. TALK-IN 147.45/SIMPLEX OR 145.23-/R(PL100).

**DE ANDY VE3FZK**

# THE PRESIDENT'S MESSAGE

FIFTY-THREE REVELERS GATHERED DECEMBER 8 FOR PAARA'S HOLIDAY BANQUET AND OFFICER INSTALLATION AT THE FARM HOUSE. WE HONORED ALL WHO HELPED MAKE 1993 A BANNER YEAR AND WELCOMED OUR 1994 OFFICERS AND BOARD MEMBERS. AMID MUCH CELEBRATION WE RECEIVED THE 1993 FIELD DAY PLAQUE FROM THE SAN MATEO RADIO CLUB. (THE SMRC RESULTS OF FIELD DAY ARE PUBLISHED ELSEWHERE IN THIS ISSUE.)

AFTER A SIX-YEAR RUN AS BANQUET CHAIRPERSON I AM RETIRING TO LET SOMEONE NEW HAVE ALL THE FUN. I WILL ACT AS ADVISOR AND CONSULTANT. CALL ME IF YOU WANT THE PLEASURE OF PRODUCING PAARA'S PREMIER SOCIAL EVENT.

THE FIRST BOARD OF DIRECTORS MEETING WILL BE AT MY HOUSE WEDNESDAY, JANUARY 19 AT 7:30 PM.

DE LILY N6PGM

'94 DUES ARE DUE !



DON'T BE A STOOGUE - PAY UR DUES ! \$6.00  
IN U.S. FUNDS IN PERSON AT THE MEETINGS  
OR IN THE MAIL TO PAARA, BOX 911,  
MENLO PARK, CA 94026.... TNX & 73 DE  
LARRY, MOE, CURLY & PAARA !

# NEW OFFICERS & BOARD

\*\*\*

**PRESIDENT** - LILY ANNE HILLIS N6PGM  
**VICE PRESIDENT** - ANDY KORSAK VE3FZK  
**SECRETARY** - JOHN GOMPERTS WB7TEM  
**TREASURER** - RON CARMICHAEL KD6RFI  
**TRUSTEE** W6OTX - FRED CANHAM K6YT  
**PROPERTY/BADGES** - FRED CANHAM K6YT  
**ARES OFFICER** - LILY ANNE HILLIS N6PGM  
**CLUB HISTORIAN** - STEVE STUNTZ K6FS  
**BANQUET CHAIRPERSON** - TO BE FILLED

## BOARD OF DIRECTORS

\*\*\*

CHUCK JOHNSON N6VFH  
DAVE MEACHAM W6EMD  
DAN CURRY WB6STW  
CHRIS REMPEL N6VZD  
KOERT KOELMAN KC6WCI  
GERRY TUCKER WA6LNV  
SY STEIN WA6ROM

**SUNNYVALE VEC TEST**

**HOTLINE**

INCLUDES **PAARA** VE TEAM AMPEX  
CAFETERIA TEST DATES AND LATEST  
FCC INFORMATION

**(408)255-9000**

# WA6ROM - SY STEIN

NOVEMBER 23, 1993, OUR VERY OWN  
SY STEIN CELEBRATED HIS 80TH BIRTHDAY.

SY'S LIFE IS FILLED WITH SO MANY  
ACCOMPLISHMENTS THAT WE WOULD NEED  
SIX PAARACRAPHS JUST TO NAME THEM ALL.

WE AT PAARA SALUTE YOU, SY, AND  
WISH YOU A CONTINUED LIFE FULL OF  
LOVE & HAPPINESS.

DE LILY N6PGM

SCENES FROM THE  
PAARA HOLIDAY DINNER...

[PHOTOS THIS PAGE DE N6VFFH]



WA6ROM AND XYL



WA6ROM AND LILY N6PCM

# COAX QST DE MIKE KD6EUD

COAX



'COAX' Coalition of Amateur Experimenters  
Meets Every second & fourth Wed nite at  
Mountain Mike's Pizza on Hamilton Ave. in Campbell.  
Meetings start at 7:00 P.M. Lets have some FUN.  
73 & 9913 DE Mike KD6EUD

## QST DE KEN KB6BPM

-EDITOR EMERITUS-

In case you or my fellow PAARA members are interested, I am still working at the Atlantic Richfield Company (ARCO) in LA, but have switched jobs. My new title is Emergency Planning Analyst. In short, I do disaster contingency and recovery planning - and will certainly be working amateur radio into the job!

I hope all is well with you. Best wishes to you and the rest of the Palo Alto Amateur Radio Association group for the Holiday Season!



Corporate Real Estate  
515 South Flower Street  
Los Angeles, California 90071  
Telephone 213 486 2425  
Fax 213 486 1310  
Internet: krducker@is.arco.com

KB6BPM

Kenneth S. Dueker  
Associate,  
Emergency Planning Analyst

73 de KB6BPM

**REMEMBER-  
OPEN HOME BREW NITE NOW AT EVERY MEETING.  
BRING UR CREATIONS TO SHOW-'N-TELL WITH THE  
CLUB! MEETING FRIDAY JANUARY 7TH! BE THERE  
OR BE SQUARE! - YE OLDE NOTICE**



# NEWS VIA DAN WB6STW -NOVICE 220MHZ ALERT-

Title : NOVICES GRANTED 220 ACCESS

---

EFFECTIVE FEBRUARY 1, 1994,

THE FOLLOWING WILL REPLACE EXISTING AMATEUR SERVICE RULES:

P97.201 Auxilliary station

(b) An auxilliary station may transmit only on the 1.25 m and shorter wavelength frequency bands, except the 222-222.15 MHz, 431-433 MHz, and 435-438 MHz segments.

P97.205 Repeater station

(b) A repeater may receive and transmit only on the 10 m and shorter wavelength bands except the 28.0-29.5 MHz, 50.0-51.0 MHz, 144.0-144.5 MHz, 145.5-146.0 MHz, 222.0-222.15 MHz, 431.0-433.0 MHz and 435.0-438.0 MHz segments.

The entry under VHF in Section 97.301(f) is amended by revising the frequencies authorized for use by Novice Class operators in ITU Region 2 to read as follows:

P97.301 Authorized frequency bands

(f) For a station having a control operator holding a Novice Class operator license:

Wavelength band	ITU Region 1	ITU Region 2	ITU Region 3	Sharing Requirements
-----------------	--------------	--------------	--------------	----------------------

See P97.303

VHF	MHz	MHz	MHz	paragraph
1.25 m	--	222-225 MHz	--	(a)

---

(In other words, from Feb.1,1994, Novices may use repeaters in the 1.25 m (222-225 MHz) Amateur band although they may not transmit on the repeater output frequencies directly, i.e., they can access 220 repeaters but they may not be control operators or trustees of 220 MHz repeaters.

---

- Source, THE W5YI REPORT, Vol.15, Issue #24, December 15th
- Fred Maia, W5YI, Editor, POB 565101, Dallas TX 75356-5101
- Edited for Packet Radio by N5AUX @ N5AUX.#DFW.TX.USA.NOAM

**WINTERFEST** - SAT. JAN. 15, 1994. NATIONAL GUARD ARMORY ON THE CAMPUS OF MONTEREY PENINSULA COLLEGE, MONTEREY. FOR INFORMATION CONTACT DOUG MCKINNEY KC3RL @ 408-663-6117.

# FIELD DAY AWARD COMES HOME TO PAARA



(1)



(2)

**Wednesday, December 8, 1993 -**

(1) SMRC's Jim Muiter W6KXG repatriates the Field Day plaque to PAARA FD Chairman Gerry Tucker WA6LNV  
 (2). Jim's remarks were very sportsmanlike and laudatory of PAARA in terms of our FD performance and membership in general. It was a truly special evening at the Holiday Dinner, where next year PAARA vows to retain possession of the local Field Day equivalent of the Vince Lombardi Trophy! -ED



**The Results of The San Mateo Radio Club 1993 Field Plaque**

All the members of The San Mateo Radio Club want to wish our good friends in the Palo Alto Amateur Radio Association (PAARA) congratulations on winning the much sought after Field Day Plaque. We had three entries:

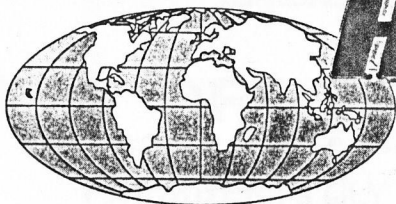
Club	CW	Phone	QSO	Pwr	Points	Bonus	Total	Plaque
	QSOS	QSOS	Points	Multi			Score	Score
PAARA	681	953	2,315	2	4,630	900	5,530	4,174
EMARC	685	623	1,993	2	3,986	1,000	4,986	3,819
SMRC	481	400	1,362	2	2,724	900	3,624	2,826

There was one late entry, but their score did not affect the results. Again congratulations to PAARA. They did a great job.

73

The Field Day Plaque Committee N6TDC -- W6KXG

— 11 STORE BUYING POWER —



# HAM RADIO OUTLET

WORLDWIDE DISTRIBUTION

OAKLAND, CA 94606  
2210 Livingston St.  
(510) 534-5757  
(800) 854-6046

Phone Hours: 9:30 AM to 5:30 PM  
Store Walk-In Hours:  
10:00 AM to 5:30 PM Closed Sundays

ANAHEIM, CA 92801  
933 N Euclid St.  
(714) 533-7373  
(800) 854-6046

OAKLAND, CA 94606  
2210 Livingston St.  
(510) 534-5757  
(800) 854-6046

Rich. WAWBYB, Mgr.  
1-880 at 23rd Ave. ramp

SAN DIEGO, CA 92123  
5375 Kearny Villa Rd.  
(619) 560-4900  
(800) 854-6046  
Tom. KIMK, Mgr.  
Hwy. 163 &  
Claremont Mesa

SUNNYVALE, CA 94086  
510 Lawrence Expwy. #102  
(408) 736-9496  
(800) 854-6046  
Tom. K86LUC, Mgr.  
Lawrence Expwy.  
So from Hwy. 101

VAN NUYS, CA 91411  
6265 Sepulveda Blvd.  
(818) 988-2212  
(800) 854-6046  
Jon. K86ZBI, Mgr.  
San Diego Hwy  
at Victory Blvd

Bob Ferrero W6RJ  
President/Owner

PORTLAND, OR 97223  
11705 S.W. Pacific Hwy.  
(503) 598-0555  
(800) 854-6046

Earl. KE7OA, Mgr.  
Tigard-99W exit  
from Hwy. 5 & 217

DENVER, CO 80231  
8400 E. Iliff Ave., #9  
(303) 745-7373  
(800) 444-9476

Joe. KD0GA, Mgr.

PHOENIX, AZ 85015  
1702 W. Camelback Rd.  
(602) 242-3515  
(800) 444-9476  
Gary. WB7SLY, Mgr.  
East of Highway 17

ATLANTA, GA 30340  
6071 Buford Highway  
(404) 263-0700  
(800) 444-7927  
Mark. K4JVO, Mgr.  
Doraville 1 mi.  
no. of I-285

WOODBURGE, VA 22191  
14803 Build America Dr.  
(703) 643-1063  
(800) 444-9799  
Curtis. WB4KZL, Mgr.  
Exit 54 - I-95, South to US 1

SALEM, NH 03078  
224 N. Broadway  
(603) 898-3750  
(800) 444-0047  
Chuck. N8ANZ, Mgr.  
Exit 1 - I-93  
28 mi. No. of Boston

AZ, CA, CO, GA, VA residents add sales tax.  
Prices, specifications, descriptions, subject  
to change without notice.

## ALINCO

### DJ-580T

2M/440 Dual Band  
40 Mem Channels  
DSQ, Dual Display  
CTCSS Enc/Dec Built-in  
Cross Band Full Duplex



CALL FOR  
SPECIAL  
LOW PRICE

## YAESU

### HANDHELDS

#### FT-416/FT-816

2 Mtr 440 Mhz  
2W 2M/2W 440  
5W optional  
Direct DC input  
Built-in VOX, 41 Mem.  
DTMF paging, CTCSS built-in



FT-416  
Black Shown  
Gray Available



#### FT-411

2M HT  
Standard 2.5W; 49 Mem  
2m/140 to 174 MHz  
EXTENDED RECEIVE

## KENWOOD

### TS-50S

HF Transceiver

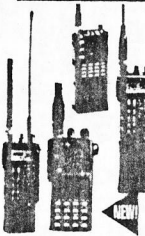


World's smallest HF transceiver  
100W out, SSB, CW, AM, FM, 12V  
Gen. Cov. RX, 6.4 lbs., 7.16 x 2.4 x 9.32"  
105 db dynamic range, 100 Mem.  
Optional external ant. tuners available  
**CALL FOR SPECIAL LOW PRICE!**

## ICOM

### HANDHELDS

IC-2GAT  
2 Meter HT • 7 Watt  
IC-D1A  
2M/440/1.2 Tri-Band  
IC-W2A/IC-X2A  
IC-W21AT, 2M/440  
IC-21A, 2 meter  
IC-P2AT, 2 Meter  
IC-P3AT, 220 MHz  
IC-P4AT, 440 MHz  
IC-24AT, Duo Band  
IC-2SRA, 2M + Wide Rx



## ALINCO

### DR-600T

2M/440 FM Transceiver



45W/35W + Airband RX  
Detachable/Removable Head  
Keyboard freq. entry from microphone!  
**CALL FOR SPECIAL PRICE**

## YAESU

### FT-990



100W HF Gen Cov Transceiver  
DDS, OSK • 500Hz CW Filter included  
**CALL FOR LOW PRICE**

## KENWOOD

### HANDHELDS

#### TH-28A

2M/2.5W DTSS  
240 Mem. w/optional  
mem. unit  
UHF RX

#### TH-225A

2 MTRS/5W  
TH-315A  
220MHz/2.5 W

#### TH-48A

440/1.5W DTSS  
240 Mem. w/optional  
mem. unit  
2 MTR RX

CALL  
FOR  
GREAT  
PRICES



## ICOM

### IC-737

HF Transceiver



12V 100W w/auto Ant. Tuner  
Built-in Gen Cov. RX, 101 Mem.  
DDS, OSK, Passband tuning  
**Priced So Low, We Can't Print It!  
Call For Your Low Discounted Price!**