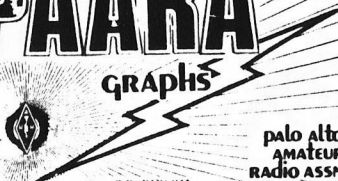


**PAARA**  
GRAPHS



palo Alto  
AMATEUR  
RADIO ASSN.

PAARA PO BOX 911  
MENLO PARK CA 94026

Happy  
Holidays  
DECEMBER 1992



Pasquinelli's  
**Farm House**

**HOLIDAY DINNER  
ADDENDUM**

DON'T FORGET OUR GIFT EXCHANGE !  
BRING ONE TO GET ONE !  
PLEASE LABEL FOR YL OR OM !  
\$5.00 MAXIMUM PLEASE !  
P.S. DOOR PRIZES ALSO !  
BE THERE OR BE SQUARE !

DE LILY N6PGM  
PERENNIAL PARTY  
CHAIRPERSON

386 Convention Way • Redwood City • 369 3337



### 1992 CLUB OFFICERS

President	Gerald Tucker	WA6LNV	415-326-4908
Vice-President	Andy Korsak	VE3FZK	415-366-5228
Secretary	John Gomperts	WB7TEM	408-879-0541
Treasurer	Lily Anne Hillis	N6PGM	415-325-5484
Trustee, W6OTX	Fred Canham	K6YT	415-948-9238
Property/Badges	Fred Canham	K6YT	415-948-9238
Refresh/Co-Prop	John Buonocore	KD6ZL	415-366-1658
ARES Officer	Lily Anne Hillis	N6PGM	415-325-5484
Club Historian	.....	.....	.....

### BOARD of DIRECTORS

Gerry Wagstaffe	W6WIR	1991-92	415-325-4670
Bill McElhinney	KA6LZI	1991-92	415-325-9808
John Buonocore	KD6ZL	1991-92	415-366-1658
Dusty Doster	K6MPN	1992-93	415-368-8156
Gill Lane	KJ6TF	1992-93	415-856-0154
Chuck Johnson	N6VFH	1992-93	408-251-8536

### PAARAgaphs Staff

Editor	Chuck Johnson	N6VFH	408-251-8536
Mailing	Bill McElhinney	KA6LZI	415-325-9808

### PAARA POLICIES

Membership in PAARA is \$6.00 per calendar year which includes a subscription to PAARAgaphs. Make payment to the Palo Alto Amateur Radio Association, P.O. Box 911, Menlo Park, CA 94026

Club Net 147.45 MHz Mondays 8:30 PM

Meet at 7:30 PM on the first friday of each month at the Menlo Park Recreation Center.

Send PAARAgaphs correspondence to:

Chuck Johnson N6VFH, EDITOR  
 3309 Mt. Logan Drive  
 San Jose, CA 95127

# FROM THE EDITOR'S DESK

## Happy Holidays & New Year from Your Editor - N6VJH

### SPEAKER OF THE MONTH

#### ROD DEAKIN NR7E

CW OPERATOR AT KFS PALO ALTO (RECEIVER IS IN HALF MOON BAY)....

**SUBJECT: "COMMERCIAL CW 'IS NOT DEAD'"**

Rod will overcome your amazement that it even exists still and how much it's used!!!

Also, you'll hear all about its history, message types, operating procedures and how they differ from ham radio, etc.

Also, some "tasty war stories will be thrown in" (to use his words).

Rod is currently also a technical consultant to KFS, and they are embarking on some kind of improved approach to digital communications.

**DINNER WITH THE SPEAKER**

蘇  
杭  
小  
館

### Su Hong Restaurant

EL CAMINO OFF RAVENSWOOD, MENLO  
PARK, 5:45 PM ON MEETING FRIDAY  
DECEMBER 4TH !

# PRESIDENT'S CORNER DE GERRY WAGLNV

THANK YOU PAARA.

I HAVE BEEN HONORED TO BE YOUR PRESIDENT FOR THE LAST FEW YEARS. I CAN'T EVEN REMEMBER HOW FAR BACK IT GOES. I HAD A 3 YEAR STINT AS YOUR PRESIDENT BEFORE THE PRESENT MARATHON, AND BEFORE THAT WAS SECRETARY FOR A FEW YEARS. I REMEMBER ATTENDING BOARD MEETINGS IN THE OLD TRAILER AT SRI AND ACTUALLY TAKING MINUTES. I CAN ALSO REMEMBER HOW NERVOUS I WAS WHEN I HAD TO RUN MY FIRST MEETING. I RECALL CLEARLY THAT ONE OF MY MAIN MOTIVATIONS FOR BECOMING PRESIDENT WAS TO LEARN HOW TO BE MORE AT EASE IN A PUBLIC SPEAKING ROLE. PAARA IS PROBABLY A LITTLE TOO FRIENDLY TO PUT THAT TO MUCH OF A TEST, BUT WHEN I GAVE A TALK TO A COUPLE THOUSAND ENGINEERS A FEW YEARS AGO IN FLORIDA I REFLECTED THAT IT WAS JUST ANOTHER PAARA MEETING. AT THIS TIME WE ARE STILL LACKING A PRESIDENT ON THE SLATE OF NEW OFFICERS. WHOEVER IT WILL BE THEY CAN BE ASSURED OF A FUN YEAR. PAARA MEMBERS LOVE TO WORK, ALTHOUGH AT FIRST BLUSH THEY'RE A LITTLE SHY ABOUT MAKING HARD & FAST COMMITMENTS. AS A VOLUNTEER ORGANIZATION IT'S SOMETHING ANY LEADER HAS TO ACCEPT. IT BOTH TRAINS & TESTS ONE'S PATIENCE AS YOU CAJOLE, ENCOURAGE & MAKE COMPROMISES. ONE IMPORTANT RULE IN SUCH AN ENVIRONMENT IS ALWAYS MEASURE YOUR EFFORTS BY THE DEGREE OF SUCCESS ACHIEVED RATHER THAN THE DEGREE OF FAILURE AGAINST A MYTHICAL STANDARD. OUR HOBBY AND OUR ORGANIZATION ARE INTENDED TO BE FUN. NO MATTER HOW WE SEEM TO STRUGGLE & BE DISORGANIZED AT TIMES, WE SHOULD BE DETERMINED TO HAVE A GOOD TIME. WE VOTE IN OFFICERS AT THE DECEMBER 4TH MEETING & TURN THE REINS OF POWER OVER TO THEM AT THE DECEMBER DINNER. LILY ANNE N6PGM HAS ORGANIZED A GREAT HOLIDAY DINNER FOR US AT THE FARM HOUSE & I HOPE EVERYONE CAN MAKE IT. I ESPECIALLY HOPE NEWER MEMBERS WILL TRY TO BE THERE. BRING YOUR SPOUSE OR FRIEND, SINCE IT'S TRULY A PARTY ATMOSPHERE & A GOOD TIME DOES DEPEND ON YOUR BEING ON HAND. BRING A GIFT TO PARTICPATE IN THE GIFT EXCHANGE & KEEP THE VALUE BELOW FIVE DOLLARS. HOPE TO SEE YOU THERE & GET YOUR CHECKS TO LILY WITH YOUR RESERVATIONS !

DE WAGLNV

---

## PAARA '93 OFFICER SLATE

**Nominations:**

**President - VACANT**

**Vice President - ANDY KORSAK VE3FZK**

**Secretary - JOHN GOMPERTS WB7TEM**

**Treasurer- LILY ANNE HILLIS N6PGM**

**Board Members (3) - BILL ZANER WB6IYS,**

**CHRIS REMPEL N6VZD, GERRY TUCKER WAGLNV.**

# WELCOME!

ON BEHALF OF THE CLUB I'D LIKE TO  
WELCOME NEW MEMBERS:  
J.S. GOLDBERG (NO CALL YET)  
ROBERT ARNETT N6DZ  
GORDON BAILLIE KD6LHO  
DE LILY N6PGM

## PORTOLA VALLEY NET QST DE JOE KB6HDC

PORTOLA VALLEY NET IS MONDAYS AT 7.00 PM LOCAL TIME 146.865  
P.L. 114.8 MINUS OFFSET. TNX FOR ASKING. 73/CUL, JOE  
From: KB6HDC@KA6JLT

## PAARA FIELD DAY SUMMARY DE CHRIS N6VZD

(DERIVED FROM QST NOVEMBER '92)

PAARA

3A SCV USA #21 OUT OF 371 94.3%

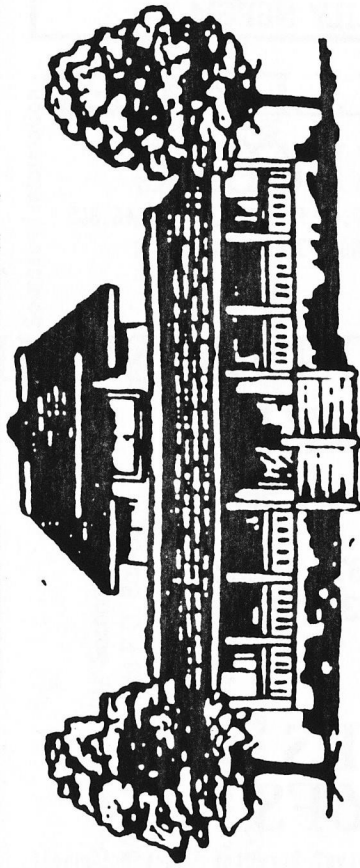
CA #5 OUT OF 43 88%

SCV #1 OUT OF 6 100%

## LEAGUE LINES DE STEVE K6FS

On Saturday, Dec. 5, ARRL Pacific Divn. Director Chuck McConnell, W6OPD, meets with his Division Cabinet, to receive inputs from clubs and divn. officers regarding issues to be presented at the January meeting of the ARRL Board of Directors at League Hq. Hottest are: (1) proposed name-change of "American Radio Relay League" to American Amateur Radio League ", and (2) a proposed plan for allocating special subbands for digital communications (AMTOR, packet, etc.) in all HF bands except 160. Both issues are discussed in November QST, pages 77 and 96 respectively. As a League-affiliated club, PAARA can directly influence the Board's decision on both by voting at the December 4th meeting. Results of the vote(s), with any recommendations will be reported to Director McConnell Dec. 5 by Steve, K6FS, assistant director representing PAARA. Read the above articles and come ready to discuss and vote! 73 es tks.....Steve K6FS. From: K6FS@KA6JLT

**LAST CHANCE !**  
DEADLINE FOR GETTING YOUR PAID MENU  
SELECTIONS TO N6PGM IS DECEMBER 2, 1992 !  
**LAST CHANCE !**



Pasquinelli's  
**FarmHouse**

**PAARA HOLIDAY PARTY AND  
OFFICER INSTALLATION  
WEDNESDAY, DECEMBER 9, 1992  
Choice of:**

**Prime Rib of Beef  
Roasted Chicken  
Catch of the Day  
Pasta Vegetarian Dinner**

**\$16.50**

**LAST  
CHANCE**

Includes: Minestrone soup, salad, potato, vegetable, delicious Farm House bread, dessert, coffee & tea. Wine will be provided by the Club.

No-host cocktails 6:00 PM

Dinner 7:15 PM

Send Checks & menu choices to:

PAARA HOLIDAY DINNER

P.O. BOX 911

MENLO PARK, CA 94026

DEADLINE FOR GETTING YOUR PAID MENU  
SELECTIONS TO N6PGM IS DECEMBER 2, 1992 !

or See Me at the meetings....

de Lily N6PGM

Perennial Party Chairperson

DEADLINE FOR GETTING YOUR PAID MENU  
SELECTIONS TO N6PGM IS DECEMBER 2, 1992 !

**386 Convention Way • Redwood City • 369.3337**

# DX ANNOUNCEMENT DE JIM W6CF

TOOLS FOR THE DXER November 6, 1992

The publications listed below are reliable, and they all give good value for the money. Other excellent publications also exist.

## Bulletins and Magazines -

*The DX Bulletin.* Weekly DX bulletin. \$32.00/yr Second Class, \$42.00/yr First Class. Send SASE for sample to P.O. Box 50, Fulton, CA 95439.

*QRZ DX.* Weekly DX bulletin. \$36.00/yr First Class. Send SASE for sample to P.O. Box 832205, Richardson, TX 75083.

*The DX Magazine.* Monthly DX magazine. \$15.00/yr. P.O. Box 50, Fulton, CA 95439.

*NCJ - The National Contest Journal.* Bimonthly contest magazine, contains much information of interest to DXers too. \$10.00/yr. ARRL, 225 Main St., Newington, CT 06111.

*The W6GO/K6HHD List.* Monthly directory of QSL managers. \$25.00/yr, single copies \$2.50. P.O. Box 700, Rio Linda, CA 95673.

*The DXer.* Monthly bulletin of the Northern California DX Club. For membership information, send an SASE to the Secretary, NCDXC, P.O. Box 608, Menlo Park, CA 94026. The NCDXC meets on the second Friday of each month, usually at a location on the San Francisco Peninsula.

## Other Sources of Information -

*Books* - Dozens of books are available on various aspects of DX and DXing, ranging from travelogues to "how to" books. Two books which are especially good are *The Complete DX'er* by Bob Locher, W9KNI (\$12.00), and *The DXCC Companion* by Jim Kearman, KR1S (\$6.00).

*Other Specialized Publications* - There are many other specialized publications of use to the DXer, such as award directories, country lists, zone maps, computer programs, etc. These are advertised regularly in the DX magazines and bulletins listed above, and many are stocked by local ham radio supply stores. One especially useful publication is the DXCC Countries List, available from the ARRL for \$2.00, postpaid.

*DX Nets* - Many on-the-air DX nets exist, mainly on 20 meter SSB. Listen to them and learn their schedules and procedures.



*The W6TI Bulletin.* An on-the-air weekly bulletin sponsored by the Northern California DX Club. Bulletins are transmitted each Sunday at 1800 PST on 7.015 and 14.002 MHz.

*ARRL DX Bulletins.* Late-breaking DX news from W1AW on phone, CW, RTTY, and packet. See QST for latest schedules.

*DX Columns.* Monthly DX columns are published in QST, CQ, 73, and *Worldradio*. Although a great deal of interesting, useful information is published in these columns, their publication lead times generally make it difficult for them to accommodate late-breaking news.

#### **DX Spotting Nets -**

*Northern California Packet DX Spotting Net -* This is Packet Cluster system covering Northern California and Western Nevada. Connect to N6ST on 146.58 MHz., K6LLK on 144.95 MHz, or W6OAT on 145.77 MHz.

*W6TI: Repeater of the Northern California DX Club -* 147.36/96 MHz. Closed repeater under P/L, but lots of non-members listen. A meeting on the air, including a DX swap shop, is held weekly each Thursday evening at 8:00 P.M.

#### **QSL Bureaus -**

*Outgoing cards -* For ARRL members only, most may be sent via the ARRL Outgoing QSL Bureau at ARRL Hq. Cost is \$2.00 per pound of cards. Those countries handled by the outgoing bureau are noted in the ARRL DXCC Countries List, mentioned above. Outgoing QSL services also exist which give more personalized service than the ARRL's outgoing bureau, but at a higher cost. One such service is operated by Richard J. Moen, N7RO, 2935 Plymouth Dr., Bellingham, WA 98225. Write with an SASE for info.

*Incoming cards -* For everyone, ARRL members and non-members alike. Send #35 self-addressed envelopes with First Class postage affixed to the Sixth District QSL Bureau, Box 1460, Sun Valley, CA 91352.

#### **Need more information?**

*Monitor* the NCDXC repeater or the DX packet cluster spotting network.

*Attend* meetings of the NCDXC.

*Talk* to other DXers - consider the Visalia convention each April. DXers are friendly!

Finally, and above all,

Get on the air and *listen*, then *operate!*

de W6CF



# HAM RADIO OUTLET

WORLDWIDE DISTRIBUTION

\*\*\*\* NEW SUNNYVALE STORE ACROSS THE EXPRESSWAY FROM FRY'S !!

**SUNNYVALE, CA 94086**  
510 Lawrence Expwy. #102  
(408) 736-9496  
(800) 854-6046

**OAKLAND, CA 94606**  
2210 Livingston St.  
(510) 534-5757  
(800) 854-6046

Phone Hours: 9:30 AM to 5:30 PM  
Store Walk-In Hours:  
10:00 AM to 5:30 PM Closed Sundays

**ANAHEIM, CA 92801**  
933 N. Euclid St  
(714) 533-7373  
(800) 854-6046  
Jim Rafferty, NERJ VP  
Near Disneyland

**OAKLAND, CA 94606**  
2210 Livingston St.  
(510) 534-5757  
(800) 854-6046  
Rich WASHBURN Mgr.  
880 at 23rd Ave. ramp

**SAN DIEGO, CA 92123**  
5375 Kearny Villa Rd  
(619) 560-4900  
(800) 854-6046  
Tom KMEK Mgr  
Hwy. 163 &  
Claremont Mesa

**SUNNYVALE, CA 94086**  
510 Lawrence Expwy #102  
(408) 736-9496  
(800) 854-6046  
Tom KIBELUC Mgr  
Lawrence Expwy  
So from Hwy 101

**VAN NUYS, CA 91411**  
6255 Sepulveda Blvd.  
(818) 988-2212  
(800) 854-6046  
Jon KBE7B Mgr.  
San Diego Fwy  
at Victory Blvd

**Bob Ferrero W6RJ**  
President/Owner

**Jim Rafferty N6RJ**  
Vice President

AZ, CA, CO, GA, VA residents add sales tax.  
Prices, specifications, descriptions, subject to  
change without notice.

**PORTLAND, OR 97223**  
11705 S.W. Pacific Hwy.  
(503) 598-0555  
(800) 854-6046  
Earl KE7DA Mgr  
Tigard-99W exit  
from Hwy. 5 & 217

**DENVER, CO 80231**  
8400 E. Iliff Ave. #9  
(303) 745-7373  
(800) 444-9476  
George K00RW Mgr

**PHOENIX, AZ 85015**  
1702 W. Camelback Rd  
(602) 242-3515  
(800) 444-9476  
Gary WB7SLY Mgr  
East of Highway 17

**ATLANTA, GA 30340**  
6071 Buford Highway  
(404) 263-0700  
(800) 444-7927  
Mark KJ4VO Mgr  
Doraville 1 mi  
no. at I-285

**WOODBRIDGE, VA 22191**  
14803 Build America Dr.  
(703) 643-1063  
(800) 444-4799  
Curtis WB4KZL Mgr  
Exit 54, I-95, South to US 1

**SALEM, NH 03079**  
224 N. Broadway  
(603) 898-3750  
(800) 444-0047  
Jim K3QIO Mgr  
Exit 1, I-93  
28 mi. No. of Boston

## ALINCO

**DJ-580T**  
2M/440 Dual Band  
40 Mem Channels  
DSQ, Dual Display  
CTCSS Enc/Dec Built-in  
Cross Band Full Duplex




**CALL FOR SPECIAL LOW PRICE**

## YAESU

**HANDHELDS**

**FT-415/FT-815**  
2 Mtr 440 Mhz  
2W 2M/1.5W 440  
5W optional  
Direct DC input  
Built-in VOX, 41 Mem.  
DTMF paging, CTCSS built-in



**FT-411**  
2M HT  
Standard 2.5W; 49 Mem  
2m/140 to 174 Mhz  
EXTENDED RECEIVE

## KENWOOD

**TS-950SDX**

RM-1 Included



(Shown with optional SM-230 & SW-2100)  
**NEW 150W MOSFET Finals + Voice Keyer Optional**  
**NEW DSP on DX + TX + NEW CW Memory Keyer**  
**NEW CW Filter in Sub-Band Receiver**  
**NEW RM-1 Included + NEW S Meter for Sub-Band**  
**General Coverage RX + Built-in AC Supply**

## ICOM

**HANDHELDS**

**IC-2GAT**  
2 Meter HT • 7 Watt

**IC-4GAT**  
440 MHz • 5 Watt

**IC-W2A**  
Deluxe Duo-Band  
Wide RX Band HT

**IC-P2AT, 2 Meter**

**IC-P3AT, 220 MHz**

**IC-P4AT, 440 MHz**

**IC-24AT, Duo Band**

**IC-2SRA, 2M + Wide Rx**



## ALINCO

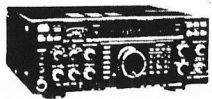
**DR-599T**  
2M/440 FM Transceiver



45W/35W + Airband RX  
Detachable/Remotable Head  
EMS-3 Remote Control Mic Std.  
**CALL FOR SPECIAL PRICE**

## YAESU

**FT-990**



100W HF Gen Cov Transceiver  
DDS, QSK • 500Hz CW Filter included  
**CALL FOR LOW PRICE**

## KENWOOD

**HANDHELDS**

**TH-28A**  
2M/2.5W DTSS  
240 Mem. w/optional mem. unit  
UHF RX

**TH-225A**  
2 MTRS/5W

**TH-315A**  
220MHz/2.5W

**TH-48A**  
440/1.5W DTSS  
240 Mem. w/optional mem. unit  
2 MTR RX

**CALL FOR GREAT PRICES**



## ICOM


**IC-735**




100W 12 volt • 12 channel memory  
General Coverage • IF Notch & QSK  
**CALL FOR LOW PRICE**

# QUEMENT ELECTRONICS

FEATURING




**ICOM**




ICOM  
IC-W2A  
CALL FOR PRICE

FEATURING



**YAESU**



YAESU FT-1000D  
CALL FOR PRICE

FEATURING



**ALINCO**  
ELECTRONICS INC.



ALINCO  
DJ-160T  
CALL FOR PRICE

**QUEMENT**  
ELECTRONICS

1000 S. Bascom Avenue  
San Jose, CA 95128

**PHONE**

**408-998-5900**

**NEW HOURS !  
NOW INCLUDING  
SUNDAYS !**

☆ M-F 9 - 7 ☆  
☆ SAT 9 - 6 ☆  
☆ SUN 11 - 4 ☆

## YOUR ACCESSORY HEADQUARTERS

- Learning Books, Magazines and Audio Tapes
- Replacement Batteries
- Electronic Kits
- Top Brand Antennas By Hustler, Larsen and Cushcraft
- Extensive Cable and Connector Selection

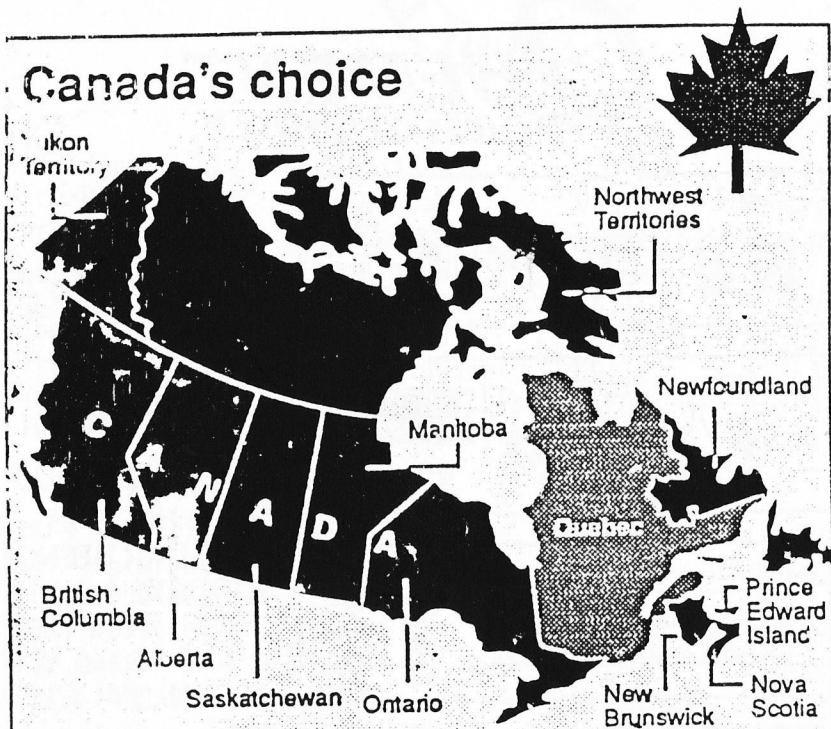


Since 1933...

**The Bay Area's Electronic Supermarket**

STAY TUNED FOR THE MINI-TRAVELOGUE....  
WITH PICTURES AND A LOT OF HAND WAVING !

## Canada's choice



**VE3FZK/W6**

**Andrew Korsak**