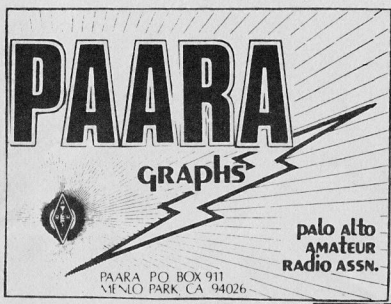


SPECIAL COMMEMORATIVE ISSUE



NOVEMBER 1992

500

YEARS

OF

HAM

RADIO

1492 -

1992



Christopher Columbus (alias John Buonocore, KD6ZL) Thanks to Redwood City Almanac October 6, 1992.



1992 CLUB OFFICERS

President	Gerald Tucker	WA6LNV	415-326-4908
Vice-President	Andy Korsak	VE3FZK	415-366-5228
Secretary	John Gomperts	WB7TEM	408-879-0541
Treasurer	Lily Anne Hillis	N6P6M	415-325-5484
Trustee, W6DTX	Fred Canham	K6YT	415-948-9238
Property/Badges	Fred Canham	K6YT	415-948-9238
Refresh/Co-Prop	John Buonocore	KD6ZL	415-366-1658
ARES Officer	Lily Anne Hillis	N6P6M	415-325-5484
Club Historian

BOARD of DIRECTORS

Gerry Wagstaffe	W6WIR	1991-92	415-325-4670
Bill McElhinney	KA6LZI	1991-92	415-325-9808
John Buonocore	KD6ZL	1991-92	415-366-1658
Dusty Doster	K6MPN	1992-93	415-368-8156
Gill Lane	KJ6TF	1992-93	415-856-0154
Chuck Johnson	N6VFH	1992-93	408-251-8536

PAARAgraphs Staff

Editor	Chuck Johnson	N6VFH	408-251-8536
Mailing	Bill McElhinney	KA6LZI	415-325-9808

PAARA POLICIES

Membership in PAARA is \$6.00 per calendar year which includes a subscription to PAARAgraphs. Make payment to the Palo Alto Amateur Radio Association, P.O. Box 911, Menlo Park, CA 94026

Club Net 147.45 MHz Mondays 8:30 PM

Meet at 7:30 PM on the first Friday of each month at the Menlo Park Recreation Center.

Send PAARAgraphs correspondence to:

Chuck Johnson N6VFH, EDITOR
3309 Mt. Logan Drive
San Jose, CA 95127

FROM THE EDITOR'S DESK

A SPECIAL NOTE ON THIS MONTH'S COVER

Our cover picture is borrowed from a Redwood City Almanac press release on our own John Buonocore, KD6ZL, the designated Columbus for Redwood City's reenactment of the 500 year anniversary of his discovery of America. We trust that KD6ZL provided the proper PAARA rendering of this event, guiding his ships in with a hand held on 147.45 (rock bound A.M. of course). N6UE really is a Santa Maria repeater. We understand the Maritime Mobile transceiver was labelled "Marconi Wireless". KD6ZL (we mean Columbus) was seeking a new route to the Ampex Flea Market-Auction when he discovered coffee in the Caribbean and John has capitalized on this by being the PAARA coffee dispenser ever since.

Seriously, congratulations, John!

SPEAKER OF THE MONTH

JIM MAXWELL W6CF

(LATEST FROM JIM VIA PACKET/DXPSN)

TOPIC:

"Everything you always wanted to know about working DX*

But were afraid to ask."

Hints and Kinks and even a few SECRETS about DXing for beginning DXers, with special emphasis on DXing for the novice and technician licensees."

DINNER WITH THE SPEAKER

蘇
杭
小
館

Su Hong
Restaurant

EL CAMINO OFF RAVENSWOOD, MENLO
PARK, 5:45 PM ON MEEETING FRIDAY
NOVEMBER 6TH!

PRESIDENT'S CORNER DE GERRY WAGLW

THANKS TO ALL WHO SHOWED UP TO HELP AT THE AMPEX AUCTION. WE MOVED 20 DOZEN DONUTS AND THE COFFEE TO WASH THEM DOWN SO I KNOW A FEW PEOPLE SHOWED UP TO HAVE A GOOD TIME. ACTUALLY WE REGISTERED 267--- DOWN ABOUT 100 FROM PREVIOUS YEARS. UNFORTUNATELY ABOUT HALF OF OUR SELLING TABLES WENT BEGGING. A PHENOMENON FOR WHICH I HAVE NO EXPLANATION. THE PAARA FLEA MARKET TABLE WAS SUCCESSFULLY SOLD OUT, EXPLAINED BY N6FEG & W6NIR'S CLAIM THAT NO UNREASONABLE OFFER WOULD BE REFUSED. THE AUCTION MATERIALS WERE OF GOOD QUALITY & WITH A FEW EXCEPTIONS THE BIDDING WAS SPIRITED. WE FINISHED UP ABOUT 11:30 AND SO DID NOT HAVE THE AUDIENCE BURNOUT THAT HAS BEEN A FEATURE OF PAST YEARS. THE TREASURER'S EFFORT LED BY N6PGM INCLUDED AT VARIOUS TIMES WB7TEM & KA6SIQ. W6APZ BROUGHT THE DONUTS, WITH REFRESHMENT SALES SUPPORTED BY W6LII, W6HLE, W6EQPV & K6MPN. KA6LZI TOOK CARE OF TABLE SALES & I THINK ENDED UP WITH RUNNING IMPOUND. W6FHC & N6VZD & OTHERS HELPED MOVE AUCTION HARDWARE. AA6PA PROVIDED SOME VERY NICE RAFFLE PRIZES & K6YT PROVIDED THE USUAL PA SYSTEM. KOERT KC6NCI & JEFF N6WLA WERE MAINSTAYS ON REGISTRATION. N6VFH PROVIDED MUCH NEEDED SIGNS & AUCTION TAGS. I'M SURE THERE ARE A FEW I'VE FORGOTTEN, ESPECIALLY CONTRIBUTORS TO THE SETUP EFFORT, BUT NEEDLESS TO SAY THANKS TO EVERYONE !

NOW I WANT TO TURN TO THE ISSUE OF PAARA ELECTIONS. AS MANY OF YOU KNOW, AFTER SEVERAL YEARS AT THE HELM I INTEND TO TAKE A BREAK NEXT YEAR. THERE ARE MANY PEOPLE IN PAARA WHO ARE MORE THAN CAPABLE WITH REGARD TO BEING OUR PRESIDENT. N6VZD AGREED TO CHAIR A NOMINATING COMMITTEE FOR A SLATE OF OFFICERS. I WILL HELP CHRIS OUT AND APPEAL TO ALL PAARA MEMBERS TO SUPPORT THE NEED FOR OFFICERS & BOARD MEMBERS. I'M A LITTLE BURNED OUT FOR THE MOMENT BUT I KNOW MANY OF YOU WOULD ACTUALLY HAVE FUN IN THE PAARA BUREAUCRACY IF YOU WOULD JUST GIVE IT A TRY. IF YOU GET TAPPED FOR A JOB, PLEASE GIVE IN TO A LITTLE GENTLE ARM TWISTING.

DE W6GLW



QST

PL (subaudible tone access) will be implemented on the 145.23 (-) repeater beginning the first week of December 1992. The PL will be 100 Hz. The Palo Alto 145.23 repeater will continue to be an open repeater, welcoming all hams to share the use of the machine. The purpose of this QST is to provide adequate notice to Bay Area hams that may not now have PL capability on their rigs to acquire that capability before PL access is implemented so that the 523 repeater will still be available to all radio amateurs.

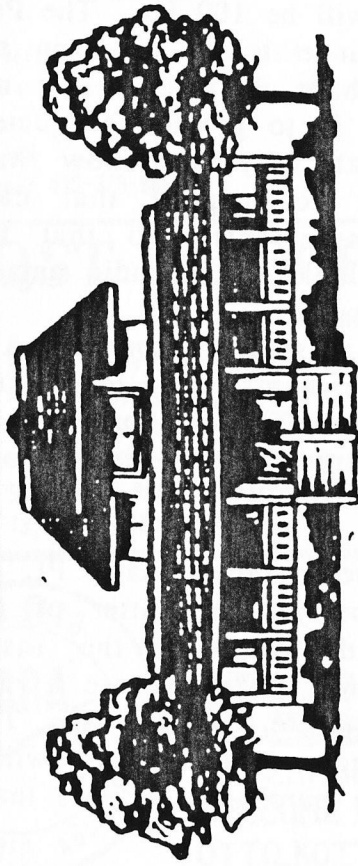
The Palo Alto machine presently *transmits* a 100 Hz subaudible tone to enable hams with tone squelch to listen only to this repeater. This has proved helpful in eliminating cable TV interference and propagation from the Sacramento area.

Most of the new two-meter radios have PL built in. Implementing PL may be just a matter of rereading your users' manual and following the instructions therein. For radios without PL, there are a number of companies who sell miniature PL boards. These are about the size of a postage stamp, so they will fit into most HTs. These can be purchased for less than \$30.

After the first week in December, access to the emergency agencies via the 523 autopatch will require the use of 100 Hz PL tone.

de Rich, W6APZ

DEADLINE FOR GETTING YOUR PAID MENU
SELECTIONS TO NPGPM IS DECEMBER 2, 1992!



Pasquinelli's
FarmHouse

PAARA HOLIDAY PARTY AND
OFFICER INSTALLATION
WEDNESDAY, DECEMBER 9, 1992

Choice of:

Drinking D.L. S.D. S.

Time Mid Ul Beer
Roasted Chicken
Catch of the Day
Pasta Vegetarian Dinner

\$16.50

Includes: Minestrone soup, salad, potato, vegetable, delicious Farm House bread, dessert, coffee & tea. Wine will be provided by the Club.

No-host cocktails 6:00 PM

Dinner 7:15 PM

Send Checks & menu choices to:

PAARA HOLIDAY DINNER

P.O. BOX 911

MENLO PARK, CA 94026

DEADLINE FOR GETTING YOUR PAID MENU SELECTIONS TO N6FGM IS DECEMBER 2, 1992 !

or See Me at the meetings....

de Lily N6FGM

Perennial Party Chairperson

DEADLINE FOR GETTING YOUR PAID MENU SELECTIONS TO N6FGM IS DECEMBER 2, 1992 !

386 Convention Way • Redwood City • 369.3337

SWAP SHOP DE TED KB6UDA

Kenwood TS-440 HF transceiver for sale with 1.8 khz ssb filter manual and service manual. The unit is about 4 years old and is in very good condition. **\$800.00**

TR-7625 25 Watt Kenwood 2 meter radio for sale. The unit has a RM-76 remote controller and two mobile mounts. The unit is in good condition. **\$300.00**

R5 vertical antenna for sale that is in good condition. The antenna is made by Cushcraft and was bought in 1991. **\$175.00**

73 Ted

Phone: 415-325-9861

QST DE BOB WB6WGM

-----ATTENTION-----

My '89 Chevy Van was stolen from the San Carlos train station Fri Oct 30. It is grey with silver trim and has 4 captains chairs and a bench seat in the back. The license plates read WB6WGM, if you spot this vehicle please notify the San Carlos Police Department, (415) 593 8014.
73, Bob WB6WGM @ KA6JLT



WELCOME!

ON BEHALF OF THE CLUB I'D LIKE TO
WELCOME NEW MEMBERS:

OTTO KOTTLER

MICHAEL BLANCHARD KD6EUD

ED LEBEL KD6KCA

RAINER "TONY" SCHULZ KD6OCC

PETER VARGA KD6NDD

JIM CARRINGTON KD6JTY

DAVID SCHMIDT KD6CNQ

CLINT HANCOCK KM6UJ

DE LILY N6PGM

QST DE RICK WA6NCX

Greetings from a former
PARAgraph editor! I thought
the attached article might be
appropriate for the next issue.

Hope to see you and the
rest of the gang if I'm ever
out there on a "first Friday."
all the best — Rick
WA6NCX

My Favorite Key

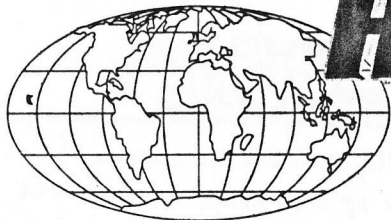
Rick Ferranti WA6NCX Arlington, Massachusetts October 1992

Of the two dozen telegraph keys in my collection, only one assumes a place of honor on my operating desk, placed where its bright polished parts catch my eye every time I sit there. This WWII Navy instrument came from the estate of longtime family friend and PAARA member Elmer Talbert W6PFC, where it was in use at his station from 1946 to just last summer.

It's a key of unusual design, and upon close scrutiny reveals more and more of its unique character. Most striking is its all metal knob, permanently staked to the lever arm. The side bearing supports are attached to the bakelite base by a single screw, but they are prevented from rotating by pins inserted into the base and supports. The captive key spring and adjustment screw are insulated from each other, with a small stepped washer allowing adjustment without binding the spring. An adjacent contact leaf ensures that the key lever is electrically connected to the base wiring. The company that made the key was obviously experienced in bakelite molding, for not only are the rear binding posts made with bakelite insulation and bakelite caps, but the key base is a two-piece bakelite sandwich, which hides all the internal connections. At the left front is a small rectangular port into which a flat piece of metal can be inserted as a keyswitch. Hotstamped on the top right is the designation "CRL 26012."

Yet there's more to this key than its intriguing construction. The CRL identifier was a Navy contractor code indicating that the key was built by Remler Company in San Francisco. Elmer worked at Remler during WWII as a tool and die maker, so he almost certainly made the tooling for this telegraph instrument. And another person still recalls turning out thousands of the knurled monel adjustment screws and locknuts for these keys, produced on an array of Remler's ancient Brown and Sharpe automatic screw machines — that person is my father.

No, the silver-knob Remler key isn't the fanciest or most eye-catching member of my collection, but it's still my favorite. Fifty years ago it was produced through the talents of many people, two of whom remained friends for over five decades. I like to think of this key as a symbol of its owner's expertise, of his warm relationship with my father, and of his many contacts with hams using their own special keys all over the world.



HAM RADIO OUTLET

WORLDWIDE DISTRIBUTION

NEW SUNNYVALE STORE ACROSS THE EXPRESSWAY FROM FRY'S !!

SUNNYVALE, CA 94086
510 Lawrence Expwy. #102
(408) 736-9496
(800) 854-6046

OAKLAND, CA 94606
2210 Livingston St.
(510) 534-5757
(800) 854-6046

Phone Hours: 9:30 AM to 5:30 PM
Store Walk-In Hours:
10:00 AM to 5:30 PM Closed Sundays

ANAHEIM, CA 92801
933 N Euclid St
(714) 533-7373
(800) 854-6046
Jim Rafferty, NERJ VP
Near Disneyland

OAKLAND, CA 94606
2210 Livingston St.
(510) 534-5757
(800) 854-6046
Rich WAWBYB, Mgr
1880 at 23rd Ave ramp

SAN DIEGO, CA 92123
5375 Kearny Villa Rd.
(619) 560-4900
(800) 854-6046
Tom MAMK, Mgr
Hwy 163 &
Claremont Mesa

SUNNYVALE, CA 94086
510 Lawrence Expwy #102
(408) 736-9496
(800) 854-6046
Tom ABELUC, Mgr
Lawrence Expwy.
So from Hwy 101

VAN NUYS, CA 91411
6265 Sepulveda Blvd.
(818) 988-2212
(800) 854-6046
Jon KB6ZBI, Mgr
San Diego Fwy
at Victory Blvd

Bob Ferraro W6RJ
President/Owner

Jim Rafferty N6RJ
Vice President

AZ CA CO GA VA residents add sales tax.
Prices specifications, descriptions, subject
to change without notice.

ALINCO

DJ-580T



2M/440 Dual Band
40 Mem Channels
DSQ, Dual Display
CTCSS Enc/Dec Built-in
Cross Band Full Duplex

**CALL FOR
SPECIAL
LOW PRICE**

YAESU

HANDHELDS



FT-415/FT-815

2 Mtr 440 Mhz
2W 2M/1.5W 440
5W optional
Direct DC input
Built-in VOX, 41 Mem.
DTMF paging, CTCSS built-in

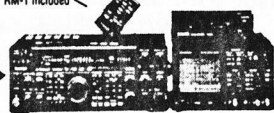
FT-411

2M HT
Standard 2.5W; 49 Mem
2m/140 to 174 Mhz
EXTENDED RECEIVE

KENWOOD

TS-950SDX

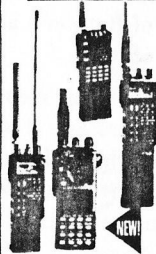
RM-1 Included



(Shown with optional SM-230 & SW-2100)
NEW 150W MOSFET Finals • Voice Keyer Optional
NEW DSP on RX & TX • NEW CW Memory Keyer
NEW CW Filter in Sub-Band Receiver
NEW RM-1 Included • NEW S Meter for Sub-Band
General Coverage RX • Built-in AC Supply

ICOM

HANDHELDS



IC-2GAT
2 Meter HT • 7 Watt

IC-4GAT
440 MHz • 5 Watt

IC-W2A
Deluxe Duo-Band

Wide RX Band HT

IC-P2AT, 2 Meter

IC-P3AT, 220 Mhz

IC-P4AT, 440 Mhz

IC-24AT, Duo Band

IC-2SRA, 2M + Wide Rx

ALINCO

DR-599T

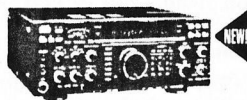


2M/440 FM Transceiver

45W/35W + Airband RX
Detachable/Remotable Head
EMS-3 Remote Control Mic Std.
CALL FOR SPECIAL PRICE

YAESU

FT-990



100W HF Gen Conv Transceiver
DDS, QSK • 500Hz CW Filter included
CALL FOR LOW PRICE

KENWOOD

HANDHELDS



TH-28A

2M/2.5W DTSS
240 Mem. w/optional
mem. unit
UHF RX

TH-48A

440/1.5W DTSS
240 Mem. w/optional
mem. unit
2 MTR RX

TH-225A

2 MTRS/5W

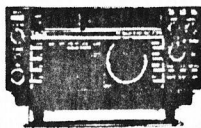
TH-315A

220MHz/2.5 W

**CALL
FOR
GREAT
PRICES**

ICOM

IC-735



100W 12 volt • 12 channel memory
General Coverage • IF Notch & QSK
CALL FOR LOW PRICE

QUEMENT ELECTRONICS

FEATURING



ICOM



ICOM
IC-W2A

CALL
FOR PRICE

FEATURING



YAESU



YAESU FT-1000D
CALL FOR PRICE

FEATURING



ALINCO
ELECTRONICS INC.



ALINCO
DJ-160T

CALL
FOR PRICE

QUEMENT
ELECTRONICS

1000 S. Bascom Avenue
San Jose, CA 95128

PHONE

408-998-5900

**NEW HOURS !
NOW INCLUDING
SUNDAYS !**

☆ M-F 9 - 7 ☆
☆ SAT 9 - 6 ☆
☆ SUN 11 - 4 ☆

YOUR ACCESSORY HEADQUARTERS

- Learning Books,
Magazines and Audio Tapes
- Replacement Batteries
- Electronic Kits
- Top Brand Antennas
By Hustler, Larsen and Cushcraft
- Extensive Cable and
Connector Selection

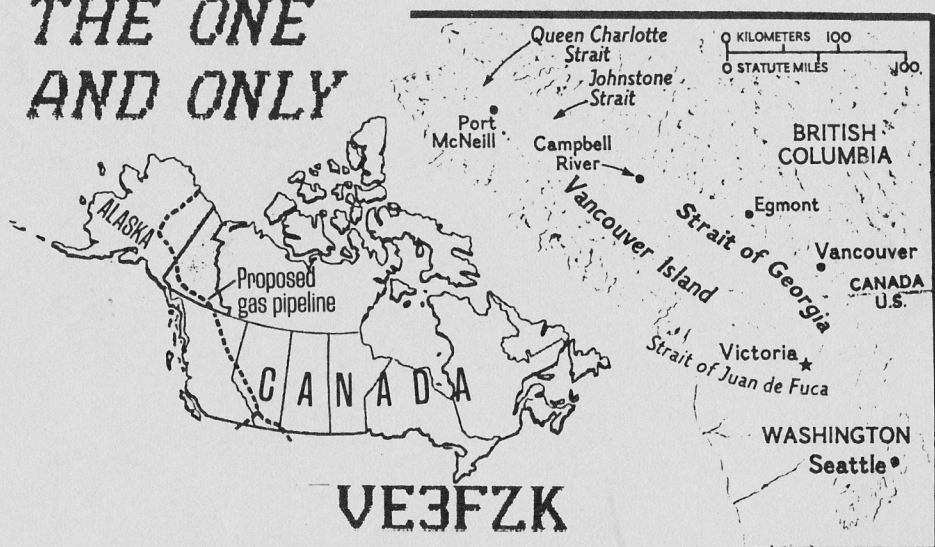


Since 1933...

The Bay Area's Electronic Supermarket



**THE ONE
AND ONLY**



VE3FZK

PRESENTING...

**"ANDY'S HAM ADVENTURES
IN THE GREAT WHITE NORTH"**

DON'T MISS IT !