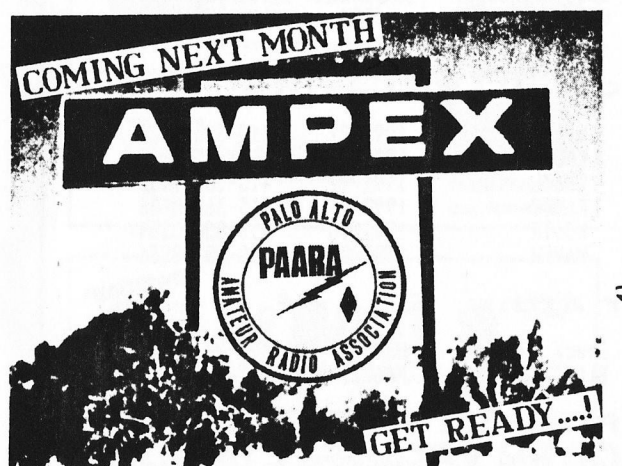


SEPTEMBER

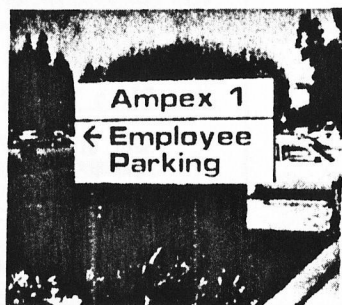
1992



1952-1992
THE
ANNUAL
-PAARA-

PALO ALTO
AMATEUR RADIO
ASSOCIATION

AUCTION &



AMPEX CAFETERIA
NEXT TO BLDG. 1
BAY ROAD
REDWOOD CITY
HIGHWAY 101 to WOODSIDE RD
to BAY RD



SATURDAY OCTOBER 10

7:30 A.M. FLEA MARKET
9:30 A.M. AUCTION



1992 CLUB OFFICERS

President	Gerald Tucker	WA6LNV	415-326-4908
Vice-President	Andy Korsak	VE3FZK	415-366-5228
Secretary	John Gomperts	WB7TEM	408-879-0541
Treasurer	Lily Anne Hillis	N6PGM	415-325-5484
Trustee, W6DTX	Fred Canham	K6YT	415-948-9238
Property/Badges	Fred Canham	K6YT	415-948-9238
Refresh/Co-Prop	John Buonocore	KD6ZL	415-366-1658
ARES Officer	Lily Anne Hillis	N6PGM	415-325-5484
Club Historian

BOARD of DIRECTORS

Gerry Wagstaffe	W6NIR	1991-92	415-325-4670
Bill McElhinney	KA6LZI	1991-92	415-325-9808
John Buonocore	KD6ZL	1991-92	415-366-1658
Dusty Doster	K6MPN	1992-93	415-368-8156
Bill Lane	KJ6TF	1992-93	415-856-0154
Chuck Johnson	N6VFH	1992-93	408-251-8536

PAARAgraphs Staff

Editor	Chuck Johnson	N6VFH	408-251-8536
Mailing	Bill McElhinney	KA6LZI	415-325-9808

PAARA POLICIES

Membership in PAARA is \$6.00 per calendar year which includes a subscription to PAARAgraphs. Make payment to the Palo Alto Amateur Radio Association, P.O. Box 911, Menlo Park, CA 94026

Club Net 147.45 MHz Mondays 8:30 PM

Meet at 7:30 PM on the first friday of each month at the Menlo Park Recreation Center.

Send PAARAgraphs correspondence to:

Chuck Johnson N6VFH, EDITOR
 3309 Mt. Logan Drive
 San Jose, CA 95127

VOLUME 35 SEPTEMBER 1992

FROM THE EDITOR'S DESK

DUE TO

LABOR DAY

MEETING

FRIDAY

SEPT 11

CU THERE

SPEAKER OF THE MONTH

LATEST FROM ANDY VIA PACKET :

Date: 07 Sep 92 20:46

Message-ID: <54493@NOARY>

From: VE3FZK@NOARY

Subject: HE CAN'T COME! WE GOTTA DO SOMETHING QUICK!

Path: KA6JLT!WD6CMU!WABDRZ!N6QMY!NOARY

I finally DID track him down; he is KA6GEM, not K6, and handle is Paul. Anyway, I talked to him but it's a bad night -- son's football game. Maybe we can have his talk on a trip to London (?) later sometime. Meanwhile, mention that we have have Marianne Walpert coming in October to show and talk about a fantastic electric car, a converted VW Rabbit.

PRESIDENT'S CORNER DE GERRY WA6LNV

SEPTEMBER IS HERE AND THE PIECES ARE FALLING INTO PLACE FOR THE FINAL MONTHS OF THE YEAR. SPECS WILL SPONSOR THE FLEA MARKET THE DAY AFTER OUR 11 SEPT MEETING. WE HAVE OUR VERY OWN AMPEX AUCTION ON 10 OCTOBER AND SOMEWHERE IN THERE IS THE PACIFIC DIVISION CONVENTION FOLLOWED BY A RESPITE IN NOVEMBER. LILY ANNE N6PGM HAS US ALL FIXED UP FOR THE HOLIDAY DINNER AT THE FARM HOUSE... THEN IT WILL BE TIME TO DO IT ALL OVER AGAIN. IF YOU HAVE A CHANCE THANK JEFF AT AMPEX SECURITY AS HE WANTS US TO STAY ORGANIZED AND GET US BOOKED IN FOR 1993 A.S.A.P. THAT'S EFFICIENCY FOR YOU ! THIS MONTH I WANT PAARA MEMBERS TO GET THEIR JUNK BOXES CLEANED OUT & DONATE A FEW ITEMS TO OUR FLEA MARKET TABLE AT AMPEX. BRING THE BOX(ES) TO THE MEETING OR TELL ME TO STOP BY YOUR QTH AND I'LL PICK UP ANYTHING WITHIN REASON. I SAW ANDY VE3FZK THE OTHER DAY AND HE DEMONSTRATED HIS PASSIVE DIRECTION FINDER ARRAY. VERY INTERESTING ! AND YES VIRGINIA THERE IS A SANTA CLAUS !
DE WA6LNV



Pasquinelli's
FarmHouse

TO ALL MEMBERS & GUESTS:
MARK YOUR CALENDAR
DEC 9, 1992
HOLIDAY PARTY - FARM HOUSE
REDWOOD CITY

MENU & DETAILS NEXT ISSUE

DE N6PGM
PERENNIAL PARTY CHAIRPERSON

386 Convention Way • Redwood City • 369-3337

WELCOME!

ON BEHALF OF THE CLUB I'D LIKE TO
WELCOME NEW MEMBERS:
VICTOR BLACK, JR. K6GKWA
DAVE BAILEY WS6W
WILLIAM J. FIES, JR. K6TYO
DE LILY N6PGM

CAL QSO PARTY QST DE ALAN AD6E

1992 California(CA) QSO Party (CQP)
Sponsored by the Northern California Contest Club

Begins: 1600 UTC - 3 October 1992

Ends: 2200 UTC - 4 October 1992

OBJECT: Stations outside of California work as many California stations in as many CA counties as possible. Stations in California work anyone.

EXCHANGE: California stations send QSO number and county. Stations outside of California send QSO number and State, Province, or Country.

QSO POINTS: Each complete non-duplicate Phone contact is worth 2 points. Each complete non-duplicate CW contact is worth 3 points. No partial contact credit. Duplicate contacts must be clearly identified in log.

MULTIPLIERS: California stations count states (50) and Canadian Provinces (VO/VE1-7 and VY1/VE8) for a possible total of 58. All others use California counties for a maximum of 58. CA stations on a county line may be claimed as a multiplier for any or all of the counties they give in their exchange. Number each multiplier as worked.

SCORE: The total score is the total number of QSO points multiplied by the total number of multipliers (58 Maximum).

FREQUENCIES: 160, 80, 40, 20, 15, 10, 6, and 2 Meters. WARC band contacts do not count. CW on 1805 and 40 KHz up from band edge. Phone on 1815, 3850, 7230, 14250, 21300, and 26450 KHz. Novices 10 KHz up from band edge and 26450.
Try CW on the half hour.
Try 160 meters at 0500 UTC; 80/75 meters at 0300 and 0700 UTC.
Try 147.54 MHz at 2000, 0000, and 0400 UTC.

ENTRY CLASS: Single Operator, Multi-Single, Multi-Multi, California County Expedition, Mobile, and Novice/Technician.

- Single Operator entries limited to 24 hours maximum; off times must be clearly marked in the log and be a minimum of 15 minutes.
- Multi-Operator entries may operate the full 30 hours.
- Stations may be worked once on CW and once on Phone per band.
- Single Operator and Multi-Singles entries are allowed only one transmitting signal.
- All CW contacts must be made in the CW sub-band except for 160 Meters. MCW is not permitted.
- All contacts must be simplex.
- California stations that change counties are considered to be a new station and may be contacted again for point and multiplier credit. California stations operating on a county line may be counted only as one QSO.

ENTRIES: All logs and signed summary sheets must be submitted to NCCC, c/o Ken Anderson, K6PU, Box 853, Pine Grove, CA 95665. Entries may be submitted in CT Version 8 format with .BIN, .SUM, and .ALL files on 5 1/4 or 3 1/2 diskettes (no 2.88M diskettes) with a signed hardcopy summary sheet. Label each diskette with call, entry category and state/county/province/country. All entries must be postmarked no later than 15 November 1992. Please include \$1.00 for results if desired. Entries of 200 or more QSOs must include duplicate check lists. For a CQP paperwork package containing log and summary sheets, county abbreviations, and contest records, send a business size SASE to the above address.

AWARDS: Certificates - To top Single Op entry in each CA county, state, province, country, and stations with 100 or more QSOs.

Trophies - To top three non CA Single-Op entries, top three CA Single-Op, top CA Multi-Single, top CA Multi-Multi, top Single and Multi-Op CA County expeditions.

Special CQP Wine Award - The top 20 CA and top 20 Non-CA Single-Op operators will receive a personalized bottle of NCCC Private Reserve California Wine. Winners under the age of 21 will receive a non-alcoholic personalized award.

Special Trophies - To the CA and non-CA Single-Ops with the most CW QSOs, to the Mobile Single-Op or Team with most total QSOs, to the top CA and non-CA Single-Op low power entries (200 watts or less), to the top CA and non-CA Single-Op Novice/Technician entries, to the top scorer outside of the USA and Canada, and to the top club in California (5 entries minimum - NCCC and SCCC are ineligible).

T-SHIRTS TO BE AWARDED ALSO.

The 10th Annual SCRA INDOOR/OUTDOOR FLEA MARKET/AUCTION

Sonoma Co. Radio Amateurs
Sebastopol, CA Saturday, Sept 26

INDOOR SELLING AREAS

*** FREE ADMISSION ! ***

DOOR PRIZES

FOOD

TIMES:

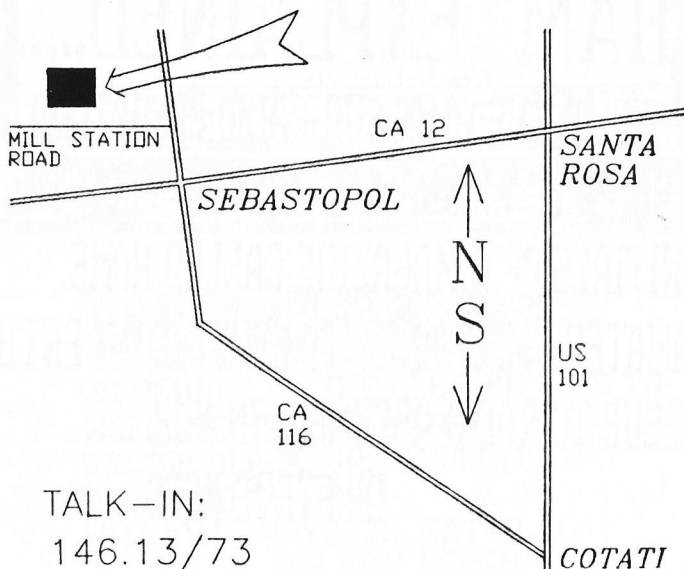
Sellers' set-up starts 7 AM.

Doors open at 8.

Auction around Noon.

LOCATION: The Holy Ghost Society hall,
7960 Mill Stn. Rd, just north of Sebastopol
on Hwy 116. Plenty of free parking.

Questions? Call AI N1AL (707) 538-7115.



TALK-IN:
146.13/73

Be there or be

PACKET TERMINALS AVAILABLE TO CLUB

A LIMITED NUMBER OF LIBERTY ELECTRONICS/
FREEDOM BRAND TERMINALS ARE AVAILABLE
FOR CLUB MEMBERS TO GET ON PACKET AND/OR
OTHER DIGITAL MODES.

CONTACT GERRY WA6LNV FOR DETAILS.

DE WA6LNV

"HAM" EXPLAINED.....

from SF Chronicle

WHERE'D THE AMATEUR RADIO OPERATORS GET
THE "HAM" NICKNAME? ANSWER: FROM THE
INITIALS OF A MAGAZINE CALLED HOME
AMATEUR MECHANIC. IT DEVOTED AN ENTIRE
ISSUE TO RADIO ASSEMBLY IN 1912.

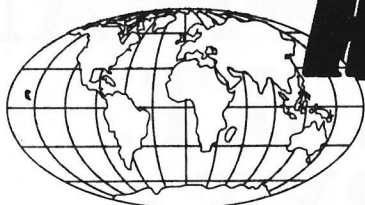
DE STEVE K6FS

PAARA VE TEAM QST DE J.T. WA6BXT



PAARA SPONSORED VE TEAM WILL BE TESTING
AT 11 A.M. AT AMPEX CAFETERIA IN REDWOOD
CITY, ON SATURDAY, SEPT. 17. LAST MONTH'S
TEST WAS CANCELLED DUE TO THE DEATH OF
OUR TEAM LEADER, DUDLEY LIGON WB6WAU.
THE TEAM IS NOW IN THE CAPABLE HANDS OF
JOE HORNE KB6OWG.

DE WA6BXT (VIA PACKET)



MAN RADIO OUTLET

WORLDWIDE DISTRIBUTION

SUNNYVALE, CA 94086
510 Lawrence Expwy. #102
(408) 736-9496
(800) 854-6046

OAKLAND, CA 94606
2210 Livingston St.
(510) 534-5757
(800) 854-6046

Phone Hours: 9:30 AM to 5:30 PM
Store Walk-In Hours:
10:00 AM to 5:30 PM Closed Sundays

NEW ADDRESS:

ANAHEIM, CA 92801
933 N. Euclid St.
(714) 533-7373
(800) 854-6046
Jim Rafferty, NGRJ, VP
Near Disneyland

OAKLAND, CA 94606
2210 Livingston St.
(510) 534-5757
(800) 854-6046
Rich WAINWORTH, Mgr
1-880 at 23rd Ave ramp

SAN DIEGO, CA 92123
5375 Kearny Villa Rd.
(619) 560-4900
(800) 854-6046
Tom KAMR, Mgr
Hwy 163 &
Claremont Mesa

NEW ADDRESS:
SUNNYVALE, CA 94086
510 Lawrence Expwy #102
(408) 736-9496
(800) 854-6046
Tom K86LUC, Mgr
Lawrence Expwy
So. from Hwy 101

VAN NUYS, CA 91411
6265 Sepulveda Blvd.
(818) 988-2212
(800) 854-6046
Jon K86ZBI, Mgr
San Diego Fwy
at Victory Blvd

Bob Ferrara WORJ
President/Owner

Jim Rafferty NGRJ
Vice President

AZ, CA, CO, GA, VA residents add sales tax
Prices, specifications, descriptions, subject
to change without notice

ALINCO

DJ-160T



2 Meter Deluxe HT
20 Mem Channels
5W Optional Battery
Encode Built-in
DTMF Auto-Dialer
Built-in DSQ
(DTMF) Paging
REG. 369.00
SALE \$249.95

ALINCO

DR-110T



2M Mobile
GREAT FOR PACKET
2M FM Transceiver • Great Performance
45 Watts • CAP+MARS Modifiable
REG. \$519.00 **SALE \$299.95**

YAESU

HANDHELDS



FT-26/FT-76
2 Mtr. 440 MHz
2w std.; 5w optional
Direct DC input
Built-in VOX/53 Mem
DTMF paging
Selectable power levels

FT-411
2M HT
Standard 2.5W; 49 Mem
2m/140 to 174 MHz
EXTENDED RECEIVE

YAESU

FT-990



100W HF Gen Cov Transceiver
DDS, QSK • 500Hz CW Filter included
CALL FOR LOW PRICE

KENWOOD

TS-850



HF Transceiver
Advanced Technology Performance
108 db Dynamic Range, Optional DSP
CALL FOR LOW PRICE

KENWOOD

HANDHELDS

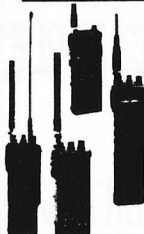


Super Compact HT
700 MAH Battery
TH-27A
RX 118-165 MHz
2 MTR/2.5 W DTSS
TH-47A
440/1.5 W DTSS
41 Memories

TH-225A
2 MTRS/5W
TH-315A
220MHz/2.5 W
CALL FOR GREAT PRICES

ICOM

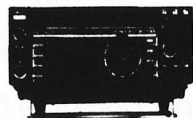
HANDHELDS



IC-2GAT
2 Meter HT • 7 Watt
IC-4GAT
440 MHz • 5 Watt
IC-W2A
Deluxe Duo-Band
Wide RX Band HT
IC-2SAT, 2 Meter
IC-3SAT, 220 MHz
IC-4SAT, 440 MHz
IC-24AT, Duo Band
IC-2SRA, 2M + Wide Rx

ICOM

IC-735



100W 12 volt • 12 channel memory
General Coverage • IF Notch & QSK
CALL FOR LOW PRICE

QUEMENT ELECTRONICS

FEATURING



ICOM



ICOM
IC-W2A

CALL
FOR PRICE

FEATURING



YAESU



YAESU FT-1000D
CALL FOR PRICE

FEATURING



ALINGO
ELECTRONICS INC.



ALINGO
DJ-180T

CALL
FOR PRICE

QUEMENT ELECTRONICS

1000 S. Bascom Avenue
San Jose, CA 95128

PHONE

408-998-5900

**NEW HOURS !
NOW INCLUDING
SUNDAYS !**

☆ M-F 9 - 7 ☆

☆ SAT 9 - 6 ☆

☆ SUN 11 - 4 ☆

YOUR ACCESSORY HEADQUARTERS

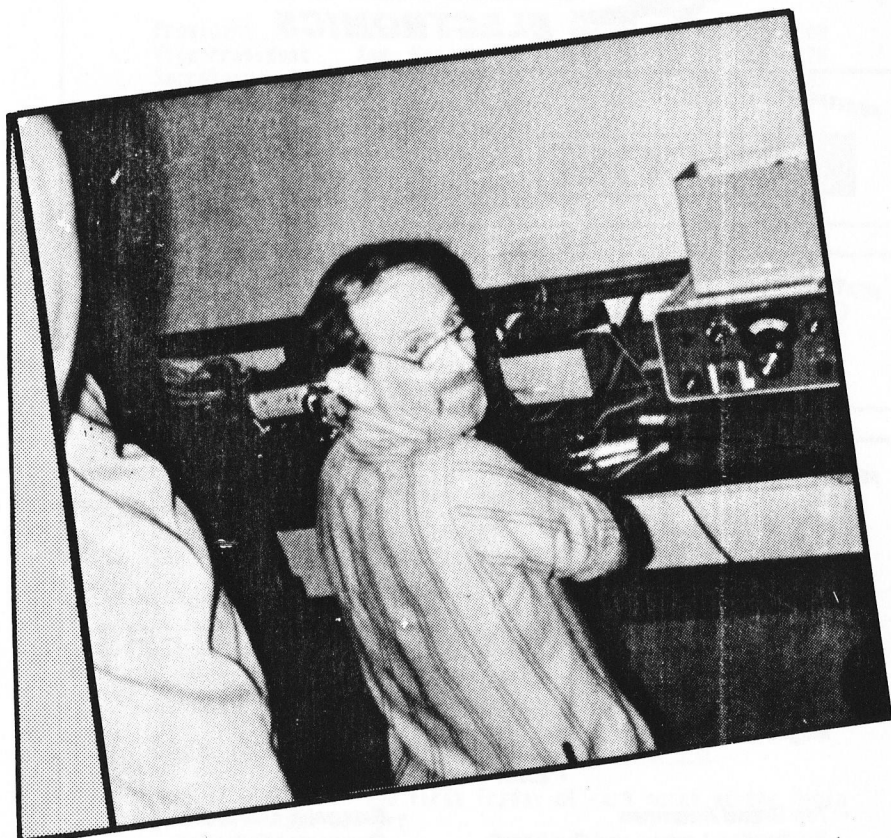
- Learning Books, Magazines and Audio Tapes
- Replacement Batteries
- Electronic Kits
- Top Brand Antennas By Hustler, Larsen and Cushcraft
- Extensive Cable and Connector Selection



Since 1933...

The Bay Area's Electronic Supermarket

PROOF...



PAARA TECHNICAL SESSIONS *DO* WORK !