

PAARA

ROSTER

GRAPHS

JUNE 1991



**I WANT YOU
FOR FIELD DAY**
NEAREST RECRUITING STATION
W6OTX

THE OFFICIAL NEWSLETTER
OF THE PALO ALTO AMATEUR
RADIO ASSOCIATION
AND
THE MENLO PARK C.D. AMATEUR RADIO CLUB

PAARA



1991 CLUB OFFICERS

President	Gerald Tucker	WA6LNV	415-326-4908
Vice-President	Andy korsak	VE3FZK	415-366-5228
Secretary	John Gomperts	WB7TEM	408-879-0541
Treasurer	Lily Anne Hillis	N6P6M	415-325-5484
Trustee, W6DTX	Fred Canham	K6YT	415-948-9238
Property/Badges	Fred Canham	K6YT	415-948-9238
Refresh/Co-Prop	John Buonocore	KD6ZL	415-366-1658
ARES Officer	Lily Anne Hillis	N6P6M	415-325-5484
Club Historian

BOARD of DIRECTORS

Ken Manders	WB6CNI	1991-92	415-366-7814
Gerry Wagstaffe	W6NIR	1991-92	415-325-4670
Bill McElhinney	KA6LZI	1991-92	415-325-9808
John Buonocore	KD6ZL	1991-92	415-366-1658
Dusty Doster	K6MPM	1990-91	415-368-8156
Bill Lane	KJ6TF	1990-91	415-856-0154
Chuck Johnson	N6VFH	1990-91	408-251-8536

PAARAgraphs Staff

Editor	Chuck Johnson	N6VFH	408-251-8536
Mailing	Bill McElhinney	KA6LZI	415-325-9808

PAARA POLICIES

Membership in PAARA is \$6.00 per calendar year which includes a subscription to PAARAgraphs. Make payment to the Palo Alto Amateur Radio Association, P.O. Box 911, Menlo Park, CA 94026

Club Net 147.45 MHz Mondays 8:30 PM

Meet at 7:30 PM on the first friday of each month at the Menlo Park Recreation Center.

Send PAARAgraphs correspondence to:

Chuck Johnson N6VFH, EDITOR
3309 Mt. Logan Drive
San Jose, CA 95127

VOLUME 34

JUNE 1991

FROM THE EDITOR'S DESK

JUNE IS...

A BUSY MONTH!
HOPE TO SEE YOU AT THE BIG EVENTS
(PAARA'S FOOTHILL FLEA MARKET AND
PAARA FIELD DAY 1991) !
TIL NEXT MONTH, 73 DE YOUR EDITOR.

SPEAKER OF THE MONTH

BOB NØARY --

ON STATE-OF-THE-ART PACKET BBS-ING!!!!!!

DINNER WITH SPEAKER, SU HONG'S, EL CAMINO
OFF RAVENSWOOD, MENLO PARK--- 5:45 P.M. ON
MEETING FRIDAY JUNE THE 7TH! TALK-IN:
147.45/SIMPLEX AND 145.23- (W6APZ/R).....
DE ANDY VE3FZK, PAARA PROGRAM CHAIRMAN.

PRESIDENT'S CORNER DE GERRY WAGLNV

IF IT'S JUNE IT MUST BE TIME TO PANIC. THE CLUB THAT KNOWS HOW TO GET IT DONE IS GOING TO BE TESTED THIS MONTH WITH A FLEA MARKET TO MANAGE FOLLOWED BY AN EARLY FIELD DAY. IT GOES SOMETHING LIKE THIS: THE FIRST FRIDAY IS THE 7TH, GET HOME EARLY AFTER THE MEETING BECAUSE THE SECOND SATURDAY IS ONLY A FEW HOURS AWAY AND WE HAVE TO HAVE OUR FOOTHILL COLLEGE ACT TOGETHER ABOUT 6 A.M. N6PGM TELLS ME SHE HAS HER TREASURER'S TEAM ALL SET UP. WE WILL NEED A LOT OF OUR REGULAR TEAM MEMBERS SUCH AS W6APZ, N6FEG, VE3FZK, WA6HLE, KD6ZL, K6EHS, W6VG, K6JJU, K6YT ETC. I MISSED THE LAST FLEA MARKET, BUT EXPECT THE EVENT TO BE IN THE PARKING LOT AT THE ENTRANCE. WE WILL GET EXACTLY 1 WEEKEND TO RECOVER AND THEN IT'S FIELD DAY ! FIELD DAY AS YOU KNOW IS THE 4TH WEEKEND OF THE MONTH NOT THE LAST. JUNE IS A LITTLE STRANGE THIS YEAR, IN HAVING 5 (COUNT 'EM) WEEKENDS. FORTUNATELY I DIDN'T WAIT UNTIL THE LAST MINUTE (HA HA) TO FIX THE 10 FOOT TOWER WHICH WAS BENT 2 YEARS AGO. I FINALLY GOT AROUND TO IT ABOUT A MONTH AGO AND IT WORKS QUITE NICELY NOW. HOPEFULLY I'VE LEARNED A LESSON ABOUT HOW TO PUT IT UP. ONE LESSON I DID LEARN IS THESE TOWERS ARE MADE OF INCREDIBLY MILD STEEL WHICH IS SOFT AS BUTTER. I THOUGHT I WOULD HAVE TO DRIVE OVER IT TO STRAIGHTEN IT OUT BUT A COUPLE OF JUMPS WITH MY FRAGILE LITTLE SELF DID THE TRICK JUST FINE. IT BROUGHT WITH IT THE REALIZATION OF HOW IMPORTANT GUYING IS TO THESE CRANK-UPS. THEY SEEM TO HAVE

NEXT PAGE----->

PRESIDENT'S CORNER DE GERRY WA6LNV

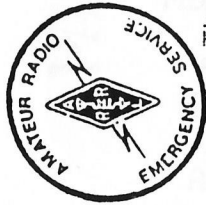
(FROM FACING PAGE)

VIRTUALLY NO BENDING STRENGTH WHATSOEVER. IN ANY CASE OUR PLAN IS TO ENTER 3A WITH MYSELF AND WB7TEM AS PHONE CAPTAINS AND KEYT AS CW CAPTAIN. WE WILL MOVE ONE OF THE PHONE STATIONS TO CW IF IT LOOKS PRODUCTIVE. WE ARE GOING TO TRY TO PUSH A LITTLE HARDER FOR POINTS THIS YEAR SO IF YOU KNOW ANY CRACKER JACK OPERATORS INTRODUCE THEM QUICKLY. WE WILL START PUTTING UP EQUIPMENT AT 11AM FRIDAY THE 21ST SO PLEASE PLAN ON BEING THERE EVEN IF YOU ONLY CAN TAKE A COUPLE HOURS OFF FROM WORK. FINALLY A BIG THANKS TO ALL WHO MADE THE PAARA PICNIC A SUCCESS. THE WEATHER COOPERATED AND THE EYEBALL QSO'S WERE A PLEASURE AS USUAL. W6LII SHOWED OFF HIS MINIATURE 2-METER QUAD---PRESUMABLY FOR A KILOWATT, AND A GOOD TIME WAS HAD BY ALL! -DE WA6LNV-

WELCOME NEW MEMBERS!

ON BEHALF OF THE ENTIRE CLUB I'D
LIKE TO WELCOME THE FOLLOWING
NEW MEMBERS -- DE LILY N6PGM

JOHN CHRISTMAN -- N6XVH
JOSEPH PISTRITTO -- NH3CKF
STEVE SIDELLS -- NO CALL
MATTHEW JOHNSON -- K1GWA
BILL FENECH-- AA6ZK
BOB LOMBAERDE -- WB6WGM



SCARES UPDATE
by Lily N6FGM



The Menlo Park Fire Protection District has one of only four heavy rescue teams in the country. They are a highly trained group of firefighters who are ready at anytime to be sent anywhere in the world to help in the most difficult rescues.

On April 26, 1991, at the conclusion of a week long training course for twenty four firefighters and their instructors, SCARES had the privilege of providing the **ONLY** communications for more than six hours of simulated exercises. The five exercises included searching in confined unlit spaces, tunnelling through concrete, climbing towers, and rappelling. The most dramatic exercise took place on the Dumbarton Bridge where bridge engineers were reportedly injured. We accompanied the firefighters through dark tunnels inside the bridge structure, hopping girders every few feet, and out onto a long narrow catwalk suspended 140 feet above the bay under the center of the bridge. It was dark, windy, and cold that night with only moonlight, helmet lights, and lanterns. While on the bridge SCARES provided all the communications for the better part of three hours while the firefighters prepared to rappel over the side to rescue the fallen victims. (The writer of this article is terrified of heights, but realized that if the rescue dog could maneuver on the catwalk so could she.)

I have been to a lot of exciting places on this little green planet we call Earth, but none more exhilarating than the catwalk on the Dumbarton Bridge.

I want to thank my team members for everything they did. I could go on forever mentioning each persons unique contribution, but just let me say I have never had the privilege of working with such outstanding people.

The heroes are:

Bob	WB6WGM
David	AA6WT
Joe	KB6HDC
Tom	K6JBR
Robin	N6ZPO
Ben	KA6SIQ
Dusty	K6MPN
Dick	K6ANN
Bill	AA6FA
Jeff	N6WLA
Dave	N6UOW
Larry	KB6OWW
Pat	KB6HZM
Richard	N6POC
Lily	N6FGM

AMATEUR RADIO COMMUNICATIONS



de Lily N6FGM

PAARA VE QST DE JT WA6BXT

At the May VE session 42 people were given a total of 86 elements. Among them was PAARA member KB6UDA, Ted, who upgraded to Advanced class. Congratulations Ted!

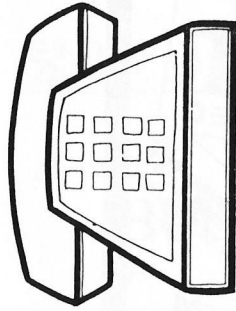
PAARA members on the May team were Dudley, WB6WAU (team leader); Gil, KJ6TF; Mike, AA6NH; Dusty, K6MPN; Ron, W6VG; Bill, WB6UVO; and Joan, WA6BXT. If you would like to join the team contact Dudley at (408) 245-4801.

Our next VE exam will be June 15, at 11 a.m., at the Ampex cafeteria on Broadway in Redwood City. We test Novice through Extra. No reservations necessary.

LICENSE TEST INFO / 24 HOURS

(408) 255 - 9000

**VOICE-
MAIL!**



**QST VIA
ROB KA6JLT**

ROB KA6JLT IS MAKING AVAILABLE, ON AN EXPERIMENTAL BASIS, A COMPUTERIZED VOICE MAIL MESSAGE CENTER FOR INTERESTED PAARA/SCARES PEOPLE. CALL "THE MACHINE" AT (415) 321-9981 AND THE DIGITIZED LADY'S VOICE WILL GIVE YOU INSTRUCTIONS. LEAVE A MESSAGE FOR ROB AND HE'LL GET YOU SET UP WITH A VOICE MAILBOX.

A NEAT SYSTEM---ONE OF MANY THAT ROB MAINTAINS FOR COMMUNICATIONS ON TOP OF HIS ACADEMIC/WORK/FAMILY COMMITMENTS.

(-ED.)

*******YE WANT LIST*******

WANTED: 100MHz SCOPE, DUAL TRACE. CONTACT: MOHAMMED DAOUD N4CER,
TEL: (415) 343-0345 (H), (415) 595-3160 (W) IN SAN MATEO.

WANTED, BY A FRIEND OF ARES: KENWOOD AT-130 OR AT -250 ANTENNA TUNER.
CONTACT CHUCK K6HXY, TEL: (408) 225-4794 AFTER 4:30PM IN SAN JOSE.

WORLDWIDE DISTRIBUTION



HAM RADIO OUTLET

LARGEST HAM OUTLET IN THE WORLD

For A HRO 72 Page
Communication Equipment Catalog
Send \$1.00 to any HRO Store

NOW

9

STORE BUYING POWER



KENWOOD



ALL MAJOR BRAND
ACCESSORIES

ICOM

BULLETIN ege has
Joined the
**HAM RADIO OUTLET
NATIONWIDE TEAM**

NOW LOCATED IN
SALEM, NH
WOODBRIDGE, VA

**THIS GIVES YOU EVEN
BETTER RESPONSE WITH
LOW-LOW OUTLET PRICES
& RAPID DELIVERIES
COAST TO COAST.**



GEOCHRON
GLOBAL
TIME
INDICATOR



YAESU



Advanced
Electronic
Applications

All Major Brands in Stock Now!



Bob Ferreo WSRJ
President/Owner
Jim Rafferty N6HJ
V.P. Regional
Sales Manager

BURLINGAME, CA 94010
999 Howard Ave. (415) 342-5757
George Mgr. W6KJFV
5 miles south on 101 from SFO

OAKLAND, CA 94606
2210 Irvinghurst St. (415) 534-5757
Scott Mgr. W6WZ/B
15,000 at 7th and Ac. Ramp

ANAHEIM, CA
(714) 763-3633 (213) 860-2040

ATLANTA, GA
(404) 263-0700

PHOENIX, AZ
(602) 747-3515

SALEM, NH
(603) 434-0047

SAN DIEGO, CA
(619) 540-6300

WOODBRIDGE, VA
(703) 441-4799

VAN NUYS, CA
(818) 908-2217



CALL TOLL FREE
IN CALIFORNIA CALL STORE NEAREST YOU

Call any of our 800 numbers coast to coast from most parts of the country.

MID-WEST/WEST ATLANTA 9 10 30 PST	SOUTHEAST ATLANTA 9 10 30 EST	MID-ATLANTIC WOODBRIDGE 9 10 30 EST	NEW ENGLAND SALEM 9 10 30 EST
---	---	---	---

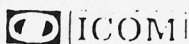
1-800-854-6046 1-800-444-7827 1-800-444-4799 1-800-444-0047



Toll free including Hawaii. Phone hrs. 7:00 am to 6:30 pm. Pacific Time, California, Arizona and Georgia customers call or visit nearest store. California, Arizona, Georgia and Virginia residents please add sales tax. Prices, specifications, descriptions subject to change without notice.

ELECTRONICS FOR HOME OR WORK . . .
YOU NAME IT . . . WE'VE GOT IT!

QUEMENT IS THE PLACE!



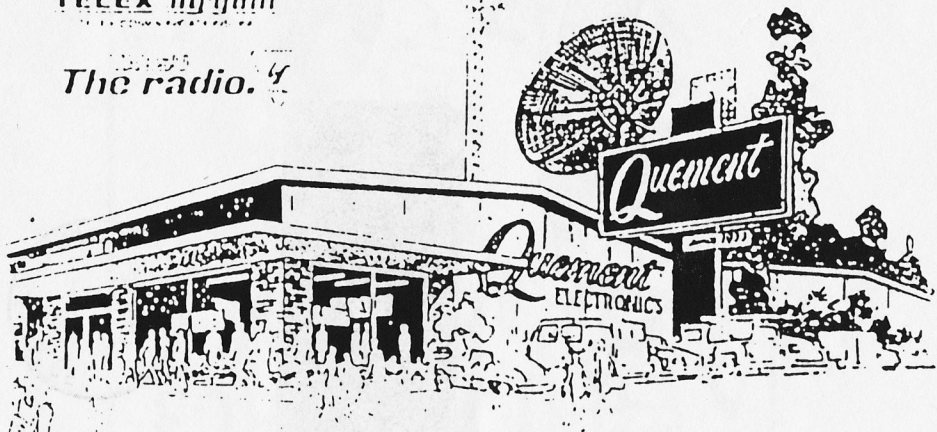
Larsen Antennas
The Best in the Business

TELEX hi gain
The Best in the Business

The radio.
The radio.



HUSTLER



QUEMENT ELECTRONICS



1000 SO. BASCOM, SAN JOSE

998-5900 • Open Mon - Sat 9-6



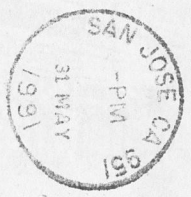
• ANTENNAS • HAM GEAR • CITIZEN'S BAND • COMMERCIAL AND INDUSTRIAL
PARTS SUPPLY • SERVICE DEPARTMENT • COMPUTERS AND SOFTWARE
• COMPLETE STEREO HI-FI DEPARTMENT

PAARA
P.O. Box 911
Menlo Park
Ca. 94026



PAARA DATEBOOK
SPECIAL JUNE EVENTS:
FOOTHILL FLEA MARKET
SAT. JUNE 8TH EARLY!
FIELD DAY SET UP
FRI. JUNE 21 11 A.M.
FIELD DAY OPERATIONS
SAT. JUNE 22 11 A.M. -
SUN. JUNE 23 11 A.M.

BE THERE OR BE SQUARE!



Andy Kofeak
504 Lakewood Way
Redwood City CA 94062

VE3FZK

First Class Mail