

# ALERT!

## Auction Relocated!

(Inside for details)

October

1986

**P A A R A**

**GRAPHS**

**Featuring:**

An informative  
Los Altos Sister

A story of rare  
useful and easy

using the chip

article on the  
City program.

DX, building a  
power supply

LM317 & more!



**THE OFFICIAL NEWSLETTER  
OF THE PALO ALTO AMATEUR  
RADIO ASSOCIATION**

**AND**

**THE MENLO PARK C.D. AMATEUR RADIO CLUB**

## 1986 Club Officers

President	Alan Larson	WA6AZP	326-6430
Vice-President	Andy Korsak	VE3FZK	366-5228
Secretary	Bill King	N6CHI	595-0258
Treasurer	Jack McEnnerney	W6LII	591-8526
Trustee, W60TX	Fred Canham	K6YT	948-9238
Property	Ed Fairbanks	W6AIN	322-0319
Co-Property/Badges	Fred Canham	K6YT	948-9238
Refreshments	Frank Chandler	WB6QPV	322-7678
ARES Officer	Steve Stuntz	K6FS	322-4952
Club Historian	Jerry Zobel	W6ARA	322-0063

## Board of Directors

Tom Scherf	K6JBR	1985-6	365-4068
Ron Panton	W6VG	1985-6	854-4814
Gerry Wagstaffe	W6NIR	1985-6	325-4814
John Buonocore	KD6ZL	1986-7	366-1658
Micheal Bach	WB6FFC	1986-7	592-2710
Perry Yelton	WR6E	1986-7	366-9481

## PAARAgaphs Staff

Editor	Kenneth Dueker	KB6BPM	322-6984
Associate Editor	????????????????	????????	???-????
Advertising	Swede Swenson	N6CHL	368-9808
Mailing	Bill McElhinney	KA6LZI	325-9808

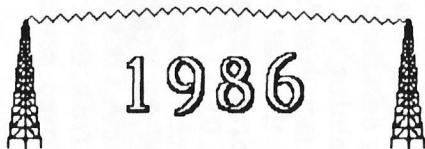
## PAARA Policies

Membership in PAARA is \$6.00 per calender year which includes a subscription to *PAARAgaphs*

Make payment to the Palo Alto Amateur Radio Association, P.O. Box 911, Menlo Park, CA 94026

Club Net on 147.45 MHz Mondays at 8:30 P.M.

October



## A Reminder:

Repeater W6RPZ has extended the length of its antenna and interference tests and stations with the log sheets and maps used in this test are encouraged to send them in at the new end of the test period, October 7, 1986.

Persons interested in these tests and their results should send a S.A.S.E. to the repeater's proprietor, Rich Stiebel, W6RPZ.

## Speaker of the Month

Mitchel Lee, KB6FPW, will discuss VLF band techniques in his lecture, "1750 Meter Band Techniques".

## Next Month:

PARAAgraphs presents "Cruise Ship Ham" by Club Historian Jerry Zobel, and much MORE!!

## Los Altos Sister City Program

The city of Los Altos has invited Cairns, Australia to be a sister city and we are awaiting their decision. The purpose of the sister city relationship is to encourage cultural and youth exchanges with local families as hosts. I hope we can extend the purpose to radio amateur exchanges and on the air freindships. Cairns has a population of 40,000 and is located 17° south of the Equator on the north east coast of Australia. Their economy is based primarily on tourism, sugar cane, and mining.

The Los Altos Sister Cities Committee meets the last Thursday of the month at 7:30 P.M. in Room 14 of the Hillview Community Center. I have attended the last two meetings and volunteered to establish amateur radio contact with the Cairns Amateur Radio Club, VK4HM. With the help of the Pacific Maritime Net (14.313 MHz, 0500 Z daily) and other hams on both sides of the Pacific, we arranged a weekly schedule with VK4AGZ (Gordon), VK4BPM (Pat, YL), and VK4BAJ (Alan) on 14.322 MHz at 9:30 P.M. local Saturday nights (0430 Zulu, Sunday). So far Los Altos amateurs N6BC, W6AEV, KB6MWC, and WA6LJ have joined the fun. To date we have exchanged greetings from the two mayors. Planned to exchange documents of mutual interest and enjoyed several trans-Pacific reg chews.

It looks like a great opportunity for Los Altos amateurs to contribute to the Sister City Program and enjoy QSO's with Cairns amateurs. So please join us on Saturday nights for a chat with the hams "down under".

--de WA6LJ, Jerry, (415) 964-6584

## Rare DX: Rick Henry

I first met Rick Henry, NJ7D, on 40-meters SSB. He was then maritime mobile in Region 2 aboard the U.S. Coast Guard cutter Rush enroute from Alaska to its home port, Alameda. A chief warrant officer, he was also electronics officer on the Rush, responsible for installation and maintenance of all electronic systems aboard from the ships intercom to early-warning and fire-control radar. He had his own ham shack aboard which was located alongside his Commodore computer on the desk in his stateroom. Due to dock at the U.S.C.G. Base in Alameda, the Rush was to attend an open house at Pier 46 in San Francisco with three other Coast Guard ships. I was invited to visit and spent several hours touring the ship, meeting the Captain and several other officers and crewmembers. The Rush is a 378-foot cutter, of the newest and largest class operated by the C.G., and is used primarily for offshore enforcement patrol and rescue work. At the time, it had just returned from a year's duty in Alaskan waters, including the Bering Sea and Straits. Rick had been aboard for three months and was due to be detached prior to reassignment as station chief at U.S.C.G. Loran Station at Marcus Island (also known as Minami Torishima). At my invitation, he accompanied me to the May P.A.A.R.A. meeting, where he was introduced and gave a short talk about his upcoming one-year tour as rare DX.

He had already applied for and had been granted a Japanese license (Minami Torishima is a Japanese possession occupied by a Japanese weather station with a staff of 20 people and shared by a 30 man Coast

Guard Loarn contingent.) This last June, Rick commenced his one-year tour taking with him a brand new TS-940 and other gear; he uses a seven-element log periodic antenna erected by one of his predecessors, and for 160 and 80 meters, he uses a dipole strung near his living quarters.

Under the call 7JIACH, he chases DX on all HF bands on both SSB and CW with some time for AMTOR and RTTY. I have had QSO's with him on 14.153 MHz as well as 14.203 MHz SSB. He reports that life on the island, while busy, is not at all what he had expected: the island itself is quite tropical although it is situated well north of the Tropic of Cancer about 1200 miles southeast of Tokyo, all by itself in the western Pacific Ocean.

Rick reports that the only access to the island is by air; there is an all-weather strip, and the two installations are served by weekly flights from Yokota Air Base, near Tokyo. The island itself is triangular, measuring about 3/4 miles on a side.

He usually starts his DX-chasing in the early evening after supper (about midnight California time); he starts on 20-meters SSB (14.203 MHz) at 4 or 5 A.M. our time he moves to 40-meter CW (7.005 MHz descending). Since his reporting date in June he has logged over 6,000 contacts keeping his states-side (QSL manager, NG7X, busy. In late December, Rick will be returning to the Bay Area and other West Coast ports on three weeks leave, at the midpoint of his 12-month stint. If his schedule permits, he will attend another P.A.A.R.A. meeting; he says he is working on a slide show about life on the island and rare DX.

--de K6FS, Steve Stuntz--

1952

ANNUAL

1986

• P A A R A •

PALO ALTO AMATEUR RADIO ASSOCIATION

# AUCTION & FLEA MARKET

SATURDAY OCTOBER 11 9:30 A.M.

NOTE: RELOCATED TO (near 'Ag...)

... (see map)

... (see map)

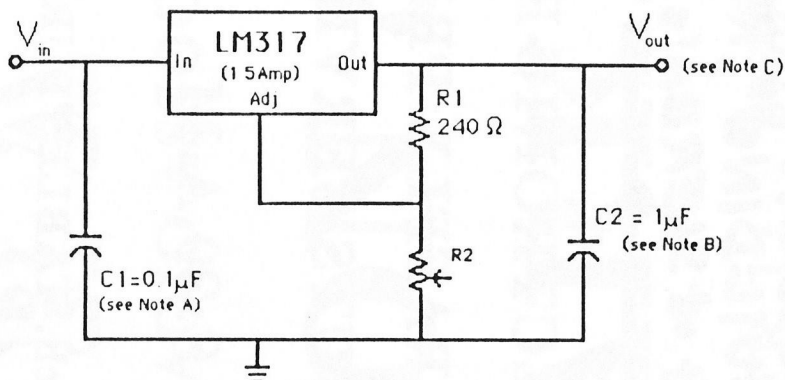
1400 ROOSEVELT AVE, REDWOOD CITY  
"COMMUNITY ACTIVITIES BUILDING", RED MORTON PARK  
Woodside Rd → El Camino (North), left at SHERBA'S (see map)

HAM RADIO GEAR    ELECTRONIC PARTS  
TEST EQUIPMENT    RAFFLE PRIZES  
COFFEE & DOUGHNUTS SERVED

DOORS OPEN AT 8:30 A.M.

FLEA MARKET TABLES \$7.00 Each. TABLES FURNISHED.  
AUCTION CHARGES: 10% OF SALES PRICE. BUY BACK  
SUBJECT TO \$5.00 MAX. CHARGE PER LOT.

## Adjustable Voltage Regulator



- Notes:
- A. Use of an input bypass capacitor is recommended if regulator is far from filter capacitors
  - B. Use of an output capacitor improved transient response, but is optional
  - C. Output voltage is calculated from the equation

$$V_0 = V_{Ref} \left( 1 + \frac{R_2}{R_1} \right)$$

### LM-317 Adjustable Voltage Regulator

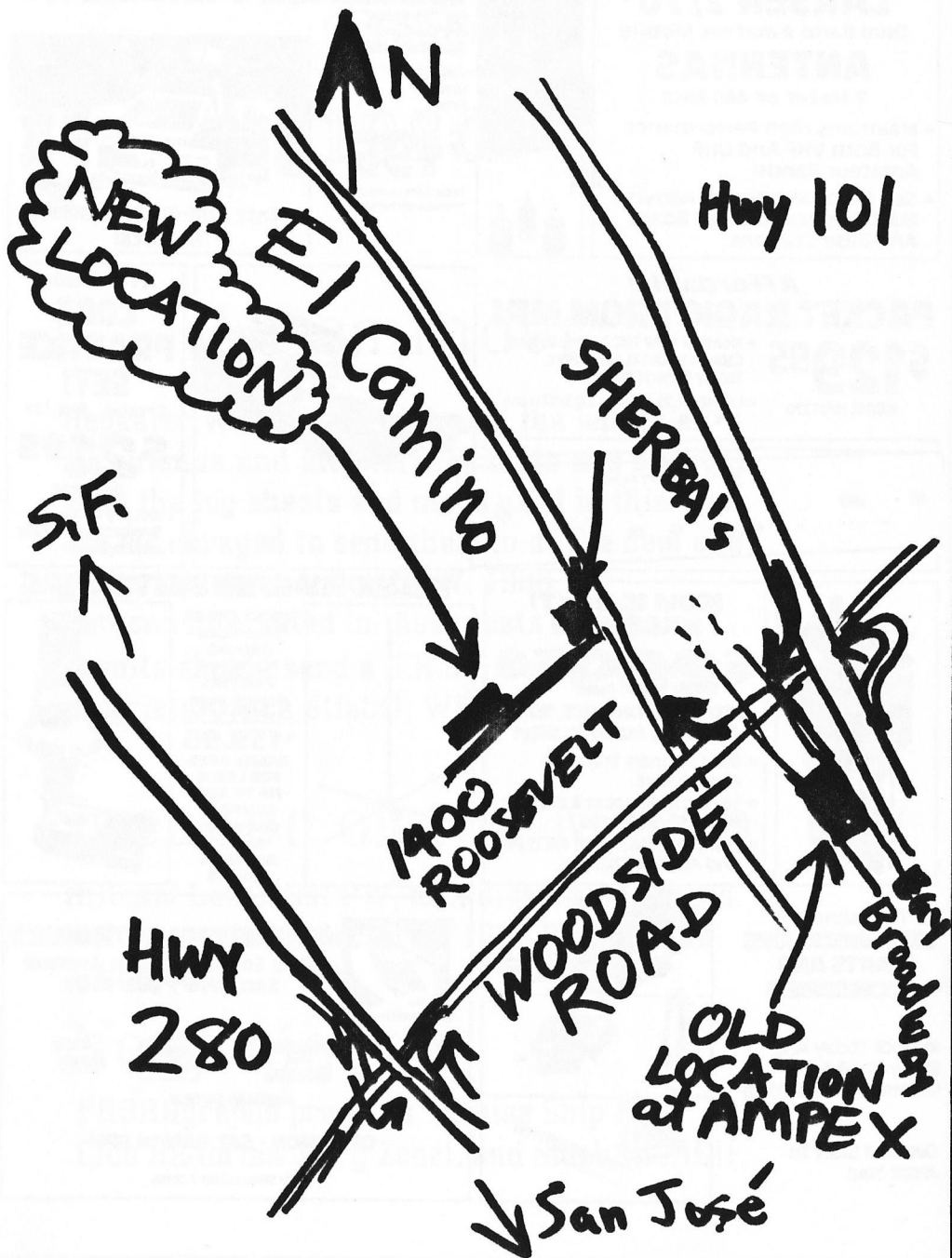
The LM317 is a adjustable 3-terminal voltage regulator capable of supplying 1.5 amps from 1.2 to 37 volts. They are extremely simple to use: usable with a simple circuit, & they are thermally protected (almost idiot proof).

I have built a regulator for use as a bench supply, using the LM317 (see Fig. 1), & it has been very useful in testing misc. electronic equipment, since one can easily switch from 1.5, 3 volts, 9, to 12. I especially appreciate the fact that the output can be dead-shortened with no problem -- I am sure this has saved the supply a number of times!

--de KA6NAN (Rob)



# PAARA AUCTION & FLEA MARKET MAP



# COMPLETE HAM RADIO DEPARTMENT

NOW AVAILABLE

## LARSEN 2/70

Dual Band Amateur Mobile

### ANTENNAS

2 Meter or 440 MHz

- Maintains High Performance For Both VHF And UHF Amateur Bands!
- Self Resonant Design Allows Most Applications For Boats And Base Stations.



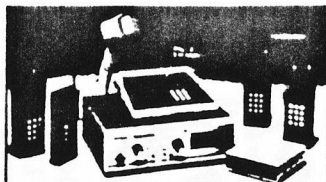
## Ritron "Jobcom" Series COMMERCIAL 2-WAY RADIOS

For "In-Plant" or "On-Site" Applications!

Handheld Units From

**\$195**

Total Communications "Person-to-Person"



Most Add-On Accessories in Stock!

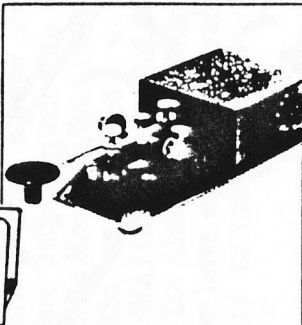
*Affordable!*

## PACKET RADIO FROM MFJ

**\$129<sup>95</sup>**

MODEL MFJ1270

- Identical TAPR TNC 2 Clone In New Cabinet With TTL Serial Port.
- Totally General Purpose
- Latest AX.25 Version 2.0 Software. 16 K RAM



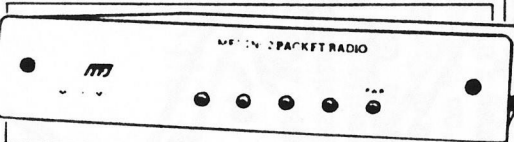
## NYE Viking CODE PRACTICE SET!

Special Reg. \$27

**\$2195**

#404-002

- Uses NYE Viking Standard Key, Oscillator And Amplifier

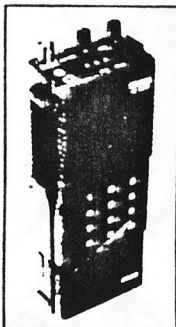


## ICOM IC-2A (T) HANDHELD

**\$269<sup>50</sup>**

Extremely Compact, With Excellent Audio Quality!

- 800 Channels Transmit And Receive.
- Separate Speaker & Built-In Mic. • Synthesized
- Complete With BP3 NiCd Pak And AC Wall Charger



## TELEX HY-GAIN ANTENNAS

MODEL CPG-2A COLLINEAR GROUND PLAIN FOR 2 METERS

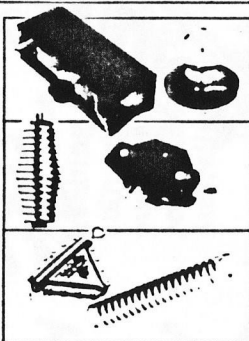
**\$36.00**

**\$139.95**

MODEL AR40 FOR LARGE FM TV AND COMPACT COMMUNICATION ANTENNA ARRAYS



Thousands of COMMUNICATIONS PARTS AND ACCESSORIES!



In Stock Today And Ready to Fill Any Communications Need!

Qualified Staff To Assist You!



## QUEUMENT ELECTRONICS

1000 South Bascom Avenue San Jose • 998-5900



Since 1933

AMERICAN EXPRESS

OPEN MON.- SAT. 9AM to 6PM

Easy Wheel Chair Access

WORLDWIDE DISTRIBUTION



# HAM RADIO OUTLET

NEW OAKLAND LOCATION

## 6 STORE BUYING POWER

### ICOM IC-R71A

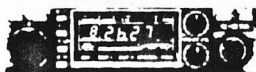


Superior Grade General Coverage Receiver

\$799

SALE! CALL FOR PRICE

### ICOM IC-37A



IC-27A (25W 2M FM)

IC-27H (45W 2M FM)

IC-37A (25W 220MHz FM)

IC-47A (25W 70cm FM)

CALL FOR LOW, LOW PRICE

### ICOM IC-735



The Latest in ICOM's Long Line of HF Transceivers

CALL FOR LOW, LOW PRICE

### ICOM IC-R7000



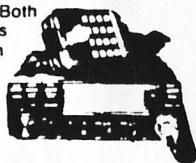
25 MHz-1300 MHz

IN STOCK FOR IMMEDIATE DELIVERY!

### ICOM LATEST EDITION

### IC-3200A DUAL BANDER

Covers Both 2 Meters & 70 cm



AT GREAT LOW, LOW PRICES

### ICOM IC-1271A

NEW



1.2 GHz Transceiver The First Full-featured 1240-1300 MHz Transceiver

AT GREAT LOW, LOW PRICES

### ICOM HAND-HELDS



IC-02AT IC-04AT

VHF/UHF



IC-2AT IC-4AT



IC-3AT

CALL FOR LOW, LOW PRICE

## All Major Brands in Stock Now!



Bob Ferrero WSRJ  
President

Jim Rafferty N8RJ  
VP So. Calif Div  
Anaheim Mgr

ANAHEIM, CA 92801  
2620 W. La Palma  
(714) 761-3033 (213) 860-2040  
Between Disneyland & Knotts Berry Farm

BURLINGAME, CA 94019

999 Howard Ave  
(415) 342-5757 George Mgr WB6DSV  
5 miles south on 101 from SFO

VIA OAKLAND, CA 94608  
2210 Livingston St.  
(415) 534-5757 Don Mgr N8IPE  
 Hwy. 17 to 23rd Ave. Exit

SAN DIEGO, CA 92123

5375 Kearny Villa Rd  
(619) 580-4900 Glenn Mgr K6NA  
 Hwy. 163 & Claremont Mesa Blvd

PHOENIX, AZ 85015  
1702 W. Camelback Rd  
(602) 242-3515 Bob K7RDH  
 East of Hwy 17

VAN NUYS, CA 91401

6265 Sepulveda Blvd  
(818) 988-2212 Al Mgr K6YRA  
 San Diego Freeway at Victory Blvd



## CALL TOLL FREE (800) 854-6046

Toll free including Alaska & Hawaii. Phone hrs: 9:30 a.m. to 5:30 p.m. Pacific Time. California and Arizona customers call or visit nearest store. California and Arizona residents please add sales tax. Prices, specifications, descriptions subject to change without notice.



**PARA**  
**P.O. Box 911**  
**Menlo Park**  
**Ca. 94026**

Andy Korsak  
504 Lakemead Way  
Redwood City CA 94062

VE3FZK 86/01



**LOVE**  
USA 22

**First Class**